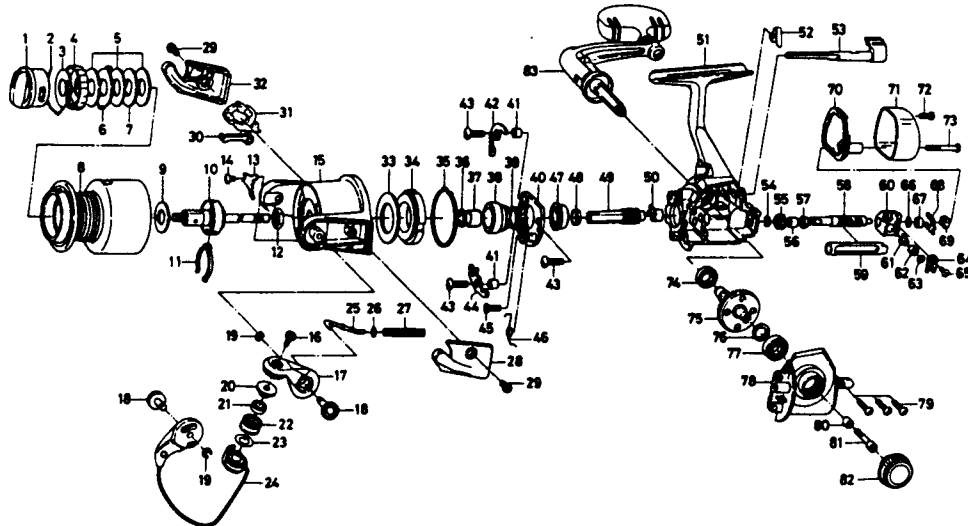


# SPINNING REEL TOURNAMENT T-Z2500i



| Key No. | Parts No. | Parts Name                    | Key No. | Parts No. | Parts Name                     |
|---------|-----------|-------------------------------|---------|-----------|--------------------------------|
| 2-8     | F34-8401  | Spool assembly                | 42      | F22-6901  | Anti-reverse pawl plate        |
| 1       | F22-7501  | Drag knob                     | 43      | E45-4001  | Anti-reverse pawl screw        |
| 2       | F06-2601  | Drag washer retainer          | 44      | F22-7001  | Anti-reverse pawl              |
| 3       | F01-6001  | Click plate washer            | 45      | B30-4001  | Bearing retainer screw         |
| 4       | E12-2803  | Drag knob click plate         | 46      | F22-7101  | Anti-reverse pawl spring       |
| 5       | B36-0204  | Drag washer                   | 47      | F22-6701  | Ball bearing B                 |
| 6       | E15-0101  | Eared washer                  | 48      | F01-6903  | Spacer                         |
| 7       | B65-2302  | Key washer                    | 49      | F37-1801  | Pinion gear                    |
| 8       | F34-8501  | Spool assembly                | 50      | E24-3301  | Pinion collar                  |
| 9       | F06-2701  | Spool washer                  | 51      | F34-5301  | Body assembly                  |
| 10      | F01-5501  | Main shaft assembly           | 52      | E26-8701  | Anti-reverse cam spring        |
| 11      | B74-7702  | Spool click leaf spring       | 53      | F01-2711  | Anti-reverse lever             |
| 12      | 341-9204  | Rotor nut                     | 54      | B33-9801  | Worm shaft gear retainer       |
| 13      | F22-7901  | Rotor nut holding plate       | 55      | F13-0501  | Worm shaft gear                |
| 14      | 350-8912  | Rotor nut holding plate screw | 56      | F28-2101  | Worm shaft bush                |
| 15      | F34-5401  | Rotor                         | 57      | E33-2501  | Ball bearing C                 |
| 16      | F14-2003  | Line roller screw             | 58      | F28-2001  | Worm shaft                     |
| 17      | F34-5801  | Bail arm                      | 59      | F28-1902  | Worm shield cover              |
| 18      | F34-5901  | Bail arm screw                | 60      | F21-6402  | Oscillating slider             |
| 19      | 320-5901  | Bail arm screw retainer       | 61      | E19-1202  | Oscillating pawl               |
| 20      | F06-6302  | Line roller collar            | 62      | E19-1301  | Oscillating pawl bush          |
| 21      | F05-5601  | Ball bearing A                | 63      | 375-0801  | Oscillating pawl washer        |
| 22      | F06-3201  | Line roller                   | 64      | E24-4901  | Oscillating slider cover       |
| 24      | F34-6101  | Bail assembly                 | 65      | E15-0203  | Oscillating slider cover screw |
| 25      | E11-5801  | Bail spring shaft             | 66      | 375-4101  | Worm shaft washer              |
| 26      | E31-3901  | Bail spring washer            | 67      | F28-2201  | Ball bearing D                 |
| 27      | F30-1301  | Bail spring                   | 68      | F28-2301  | Worm shaft retainer            |
| 28      | F34-6001  | Bail spring cover             | 69      | F28-2401  | Worm shaft collar              |
| 29      | F01-3701  | Bail spring cover screw       | 70      | F01-6102  | Water shield                   |
| 30      | F01-4301  | Bail trip plate               | 71      | F01-6204  | Rear cover                     |
| 31      | F34-6401  | Bail trip lever               | 72      | F01-6302  | Rear cover screw A             |
| 32      | F34-6601  | Bail trip cover               | 73      | F01-7202  | Rear cover screw B             |
| 33      | F19-7203  | Oiled washer                  | 74      | F01-6401  | Ball bearing E                 |
| 34      | F15-3301  | Roller clutch                 | 75      | E24-7009  | Drive gear                     |
| 35      | F21-2501  | Roller clutch retainer        | 76      | 375-8501  | Drive gear washer              |
| 36      | F26-8501  | Rotor washer                  | 77      | 636-6401  | Ball bearing F                 |
| 37      | F15-5101  | Spacing sleeve                | 78      | F01-3202  | Side cover                     |
| 38      | F15-1201  | Anti-reverse ratchet          | 79      | 351-1106  | Side cover screw               |
| 39      | 375-8507  | Spacing sleeve                | 80      | F16-9301  | Handle collar                  |
| 40      | F22-7801  | Bearing retainer              | 81      | F38-7101  | Handle screw                   |
| 41      | F22-6801  | Anti-reverse pawl collar      | 82      | F14-3601  | Handle screw cap               |