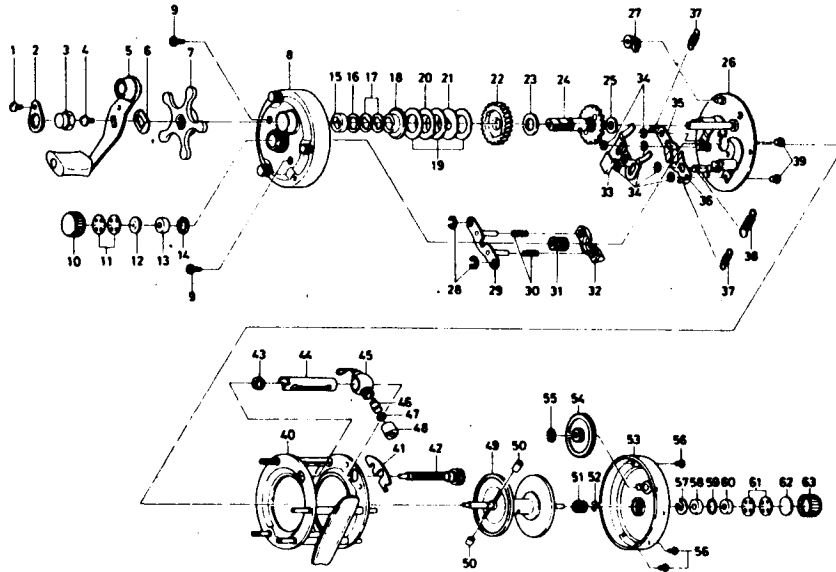




BAITCASTING REEL *Millionaire* 3H



Line capacity: 165 yds., 15 lb. test (150m Dia. 0.40mm)

Key No.	Parts No.	Parts Name	Key No.	Parts No.	Parts Name
1	63530501	Handle nut plate screw	33	67809601	Clutch lever
2	60403201	Handle nut plate	34	63208201	Clutch ret. ring
3	63415801	Handle nut	35	60404701	Clutch stopper plate A
4	63530701	Handle screw	36	60404801	Clutch stopper plate B
5	67458703	Handle assembly	37	61428503	Set plate spring A
6	61509001	Handle washer	38	61428502	Set plate spring B
7	65503101	Star drag assembly	39	61216801	Set plate screw
8	67809403	Right side cover assembly	40	67809902	Frame assembly
9	63531701	Right side cover screw	41	61514101	Worm shaft lock arm
10	63420801	Right spool cap	42	67108201	Worm shaft
11	63737501	Ball bearing ret. washer	43	60217201	Shield bush
12	63204101	Ball bearing retainer A	44	66346101	Worm shield
13	66345301	Bearing metal	45	67810201	Line guide
14	63206501	Bearing metal ret. ring	46	61214211	Line guide pin
15	66345801	Drag ring	47	63750800	Line guide washer
16	63737801	Drag washer A	48	63415901	Line guide nut
17	61508901	Spring washer	49	67353701	Spool
18	65012601	Drag wheel	50	65008001	Brake collar
19	63752201	Drag washer B	51	64022001	Spool gear
20	63709711	Drag washer C	52	63204201	Spool gear ret. ring
21	63752301	Drag washer D	53	67810307	Left side cover assembly
22	64132101	Drive gear	54	64130001	Cog wheel
23	63749303	Gear shaft washer A	55	63208001	Cog wheel ret. ring
24	67254611	Gear shaft assembly	56	63524201	Left cover screw
25	63737611	Gear shaft washer B	57	63206501	Bearing metal ret. ring
26	67809501	Set plate assembly	58	66345301	Bearing metal
27	67700301	Anti-reverse claw	59	61706701	"O" ring
28	63208001	P. yoke guide plate ret. ring	60	63752401	Bearing metal retainer B
29	67809701	Pinion yoke guide plate	61	63737501	Bearing metal ret. washer
30	61439311	Pinion yoke spring	62	63747211	Rubber washer
31	67502401	Pinion gear	63	63421001	Left spool cap
32	66359201	Pinion yoke			

Darwa

Page
128

Date
12-75

Rev. No.
00