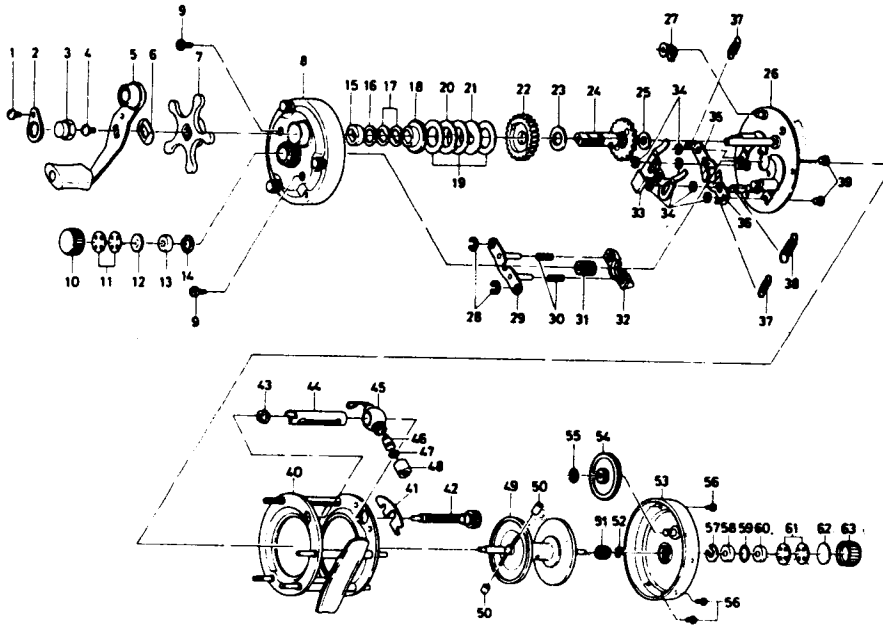


BAITCASTING REEL

Millionaire 3H



LINE CAPACITY: 165 YDS., 15 LB. TEST (150m. 6.8kg)

Key No.	Parts No.	Parts Name	Key No.	Parts No.	Parts Name
1	6-353-0501	Handle nut plate screw	33	6-780-9601	Clutch lever
2	6-040-3201	Handle nut plate	34	6-320-8202	Clutch ret. ring
3	6-341-5801	Handle nut	35	6-040-4701	Clutch stopper plate A
4	6-353-0701	Handle screw	36	6-040-4801	Clutch stopper plate B
5	6-745-8703	Handle	37	6-142-8503	Set plate spring A
6	6-150-9001	Handle washer	38	6-142-8502	Set plate spring B
7	6-550-3101	Star drag	39	6-121-6801	Set plate screw
8	6-780-9403	Right side cover	40	6-780-9902	Frame
9	6-353-1701	Right side cover screw	41	6-151-4111	Worm shaft lock arm
10	6-342-0801	Right spool cap	42	6-710-7711	Worm shaft
11	6-373-7501	Bearing metal ret. washer	43	6-021-7201	Shield bush
12	6-320-4101	Bearing metal retainer A	44	6-634-6101	Worm shield
13	6-634-5311	Bearing metal	45	6-781-0201	Line guide
14	6-320-6501	Bearing metal ret. ring	46	6-121-4211	Line guide pin
15	6-634-5801	Drag ring	47	6-375-0800	Line guide washer
16	6-373-7803	Drag washer A	48	6-341-5901	Line guide nut
17	6-150-8901	Spring washer	49	6-735-3701	Spool
18	6-501-2601	Drag wheel	50	6-500-8011	Brake collar
19	6-375-2201	Drag washer B	51	6-402-2001	Spool gear
20	6-370-9711	Drag washer C	52	6-320-4202	Spool gear ret. ring
21	6-375-2301	Drag washer D	53	6-781-0312	Left side cover
22	6-413-2101	Drive gear	54	6-413-0001	Cog wheel
23	6-374-9303	Gear shaft washer A	55	6-320-8002	Cog wheel ret. ring
24	6-725-4611	Gear shaft	56	6-352-4211	Left cover screw
25	6-373-7611	Gear shaft washer B	57	6-320-6501	Bearing metal ret. ring
26	6-780-9501	Set plate	58	6-634-5311	Bearing metal
27	6-770-0301	Anti-reverse claw	59	6-170-6701	"O" ring
28	6-320-8002	Pinion yoke guide plate ret. ring	60	6-375-2401	Bearing metal retainer B
29	6-780-9701	Pinion yoke guide plate	61	6-373-7501	Bearing metal ret. washer
30	6-143-9311	Pinion yoke spring	62	6-374-7211	Rubber washer
31	6-750-2401	Pinion gear	63	6-342-1001	Left spool cap
32	6-635-9201	Pinion yoke			