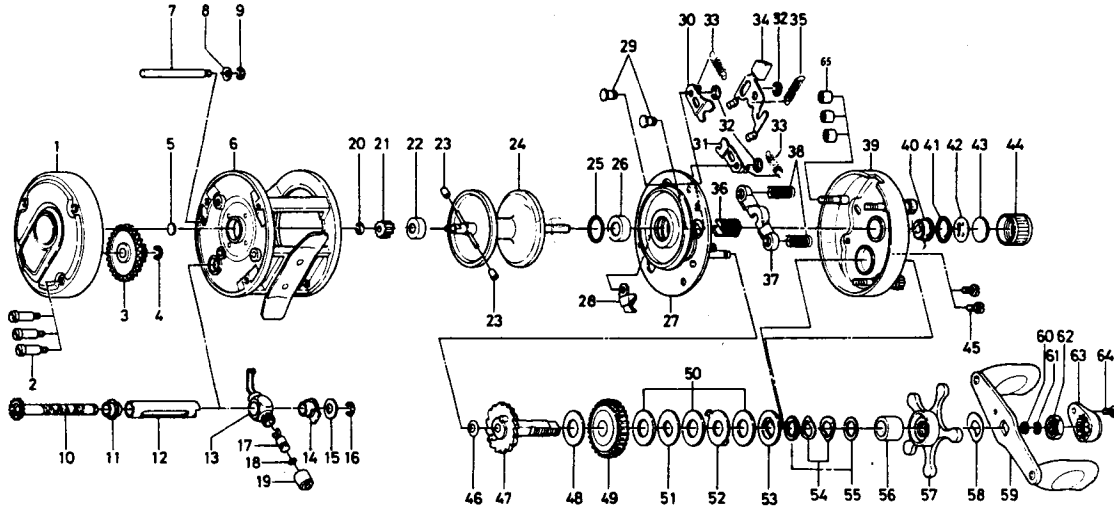


BAITCASTING REEL

Millionaire 3RM & 4HM



Key No.	Parts No.	Parts Name	Key No.	Parts No.	Parts Name
1	6-B34-0301	Left side cover	36	6-B34-0101	Pinion gear
2	6-B15-1901	Left side cover screw	37	6-B33-7501	Pinion yoke
3	6-413-0001	Cog wheel	38	6-B33-7601	Pinion yoke spring
4	6-320-8002	Cog wheel ret. ring	39	6-B33-6003	Right side cover
5	6-374-9102	Bearing metal washer	40	6-B33-6301	Bush
6	6-B33-8701	Frame	41	6-B05-5201	"O" ring
7	6-B10-0401	Frame post	42	6-373-7502	Bearing metal ret. washer
8	6-373-7611	Frame post spring washer	43	6-374-7221	Bearing metal washer
9	6-320-5901	Frame post retainer	44	6-B14-6601	Right spool cap
10	6-B10-0101	Worm shaft	45	6-353-1701	Right side cover screw
11	6-B10-0301	Shield bush	46	6-373-7611	Gear shaft washer A
12	6-B09-9601	Worm shield	47	6-B33-7901	Gear shaft
13	6-B09-9501	Line guide	48	6-374-9302	Gear shaft washer B
14	6-B09-9701	Worm shaft holder	49	6-B10-4101	Drive gear
15	6-373-2700	Worm shaft holder washer	50	6-374-9305	Drag washer A
16	6-320-8002	Worm shaft retainer	51	6-374-9401	Drag washer B
17	6-121-4211	Line guide pin	52	6-375-8701	Drag washer C
18	6-375-0800	Line guide washer	53	6-376-0001	Drag washer D
19	6-341-5901	Line guide nut	54	6-150-8901	Spring washer
20	6-B33-9801	Spool gear ret. ring	55	6-373-7803	Drag washer E
21	6-B33-9701	Spool gear	56	6-502-0801	Spacing sleeve
22	6-637-5601	Bearing metal A	57	6-550-3101	Star drag
23	6-B35-2701	Brake collar	58	6-150-9001	Handle washer
24	6-B33-9402	Spool	59	6-747-1701	Handle
25	6-171-1001	"O" ring	60	6-B41-1701	Handle nut washer
26	6-B10-3801	Bearing metal B	61	6-320-8202	Handle nut retainer
27	6-B33-6401	Set plate	62	6-B12-4701	Handle nut
28	6-770-0301	Anti-reverse claw	63	6-B14-2501	Handle nut plate
29	6-121-6801	Set plate screw	64	6-351-1801	Handle nut plate screw
30	6-040-4701	Clutch stopper plate A	65	6-B24-7001	Right side cover screw nut
31	6-040-4801	Clutch stopper plate B	Million 4HM Special Parts		
32	6-320-8202	Clutch ret. ring	1	6-B33-9901	Left side cover
33	6-142-8503	Set plate spring A	36	6-B34-0001	Pinion gear
34	6-B33-7301	Clutch lever	39	6-B33-6002	Right side cover
35	6-142-8502	Set plate spring B	49	6-413-8802	Drive gear