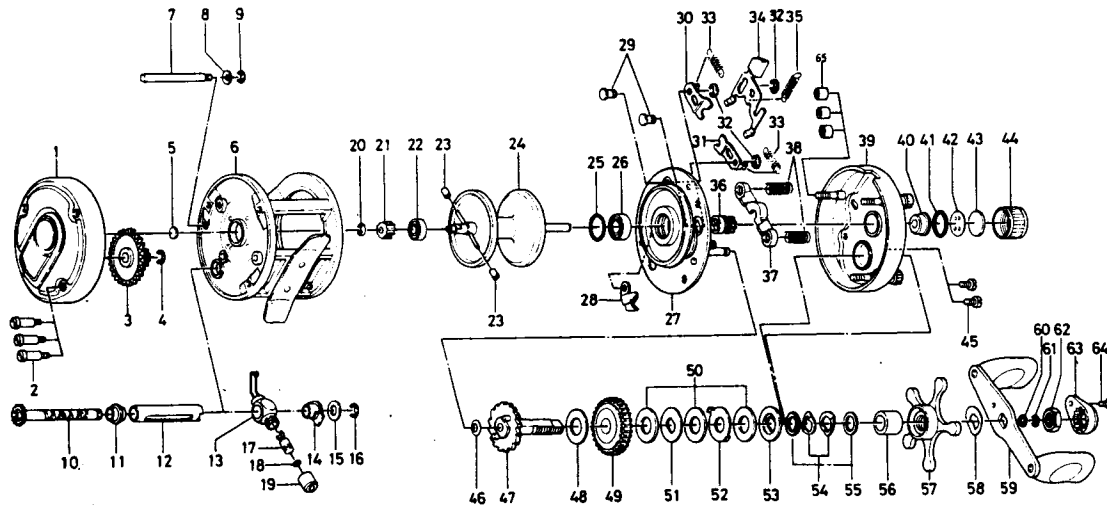


BAITCASTING REEL

Millionaire 5HM



Key No.	Parts No.	Parts Name
1	6-B33-8201	Left side cover
2	6-B15-1901	Left side cover screw
3	6-413-0001	Cog wheel
4	6-320-8002	Cog wheel ret. ring
5	6-374-9102	Bearing metal washer
6	6-B33-8701	Frame
7	6-B10-0401	Frame post
8	6-373-7611	Frame post spring washer
9	6-320-5901	Frame post retainer
10	6-B10-0101	Worm shaft
11	6-B10-0301	Shield bush
12	6-B09-9601	Worm shield
13	6-B09-9501	Line guide
14	6-B09-9701	Worm shaft holder
15	6-373-2700	Worm shaft holder washer
16	6-320-8002	Worm shaft retainer
17	6-121-4211	Line guide pin
18	6-375-0800	Line guide washer -
19	6-341-5901	Line guide nut
20	6-B33-9801	Spool gear ret. ring
21	6-B33-9701	Spool gear
22	6-637-2101	Ball bearing
23	6-B35-2701	Brake collar
24	6-B33-9402	Spool
25	6-171-1001	"O" ring
26	6-B18-1601	Ball bearing
27	6-B33-6401	Set plate
28	6-770-0301	Anti-reverse claw
29	6-121-6801	Set plate screw
30	6-040-4701	Clutch stopper plate A
31	6-040-4801	Clutch stopper plate B
32	6-320-8202	Clut ret. ring
33	6-142-8503	Set plate spring

Key No.	Parts No.	Parts Name
34	6-B33-7301	Clutch lever
35	6-142-8502	Set plate spring B
36	6-B33-7701	Pinion gear
37	6-B33-7501	Pinion yoke
38	6-B33-7601	Pinion yoke spring
39	6-B33-6007	Right side cover
40	6-B33-6301	Bush
41	6-B05-5201	"O" ring
42	6-373-7502	Bearing metal ret. washer
43	6-374-7221	Bearing metal washer
44	6-B14-6601	Right spool cap
45	6-353-1701	Right side cover screw
46	6-373-7611	Gear shaft washer A
47	6-B33-7901	Gear shaft
48	6-374-9302	Gear shaft washer B
49	6-413-8802	Drive gear
50	6-374-9305	Drag washer A
51	6-374-9401	Drag washer B
52	6-375-8701	Drag washer C
53	6-376-0001	Drag washer D
54	6-150-8901	Spring washer
55	6-373-7803	Drag washer E
56	6-502-0801	Spacing sleeve
57	6-550-3101	Star drag
58	6-150-9001	Handle washer
59	6-747-1701	Handle
60	6-B41-1701	Handle nut washer
61	6-320-8202	Handle nut retainer
62	6-B12-4701	Handle nut
63	6-B14-2501	Handle nut plate
64	6-351-1801	Handle nut plate screw
65	6-B42-7001	Right side cover screw nut