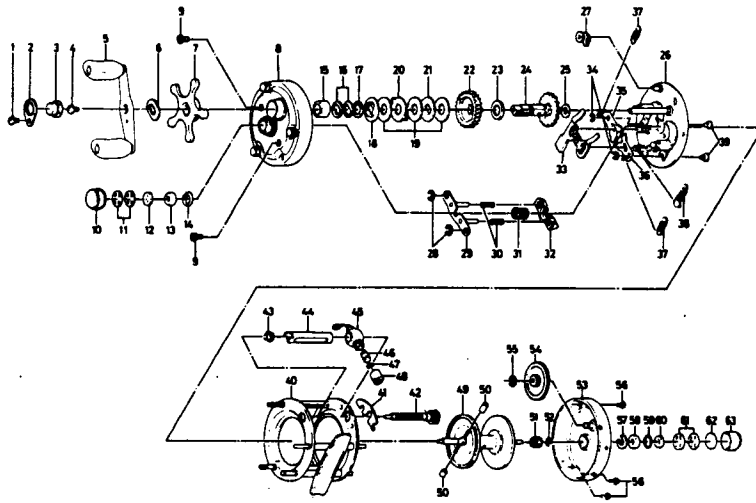


**BAITCASTING REEL Millionaire M3R**



| Key No. | Parts No.  | Parts Name                        |
|---------|------------|-----------------------------------|
| 1       | 6-353-8301 | Handle nut plate screw            |
| 2       | 6-040-3201 | Handle nut plate                  |
| 3       | 6-341-5801 | Handle nut                        |
| 4       | 6-353-0701 | Handle screw                      |
| 5       | 6-747-1701 | Handle                            |
| 6       | 6-150-9001 | Handle washer                     |
| 7       | 6-550-3101 | Star drag                         |
| 8       | 6-780-9413 | Right side cover                  |
| 9       | 6-353-1701 | Right side cover screw            |
| 10      | 6-342-0801 | Right spool cap                   |
| 11      | 6-373-7502 | Bearing metal ret. washer         |
| 12      | 6-320-4101 | Bearing metal retainer A          |
| 13      | 6-634-5311 | Bearing metal                     |
| 14      | 6-320-6501 | Bearing metal ret. ring           |
| 15      | 6-501-8701 | Spacing sleeve                    |
| 16      | 6-150-8901 | Spring washer                     |
| 17      | 6-373-7803 | Drag washer A                     |
| 18      | 6-376-0001 | Drag washer B                     |
| 19      | 6-374-9305 | Drag washer C                     |
| 20      | 6-375-8701 | Drag washer D                     |
| 21      | 6-374-9401 | Drag washer E                     |
| 22      | 6-413-9211 | Drive gear                        |
| 23      | 6-374-9303 | Gear shaft washer A               |
| 24      | 6-725-4611 | Gear shaft                        |
| 25      | 6-373-7611 | Gear shaft washer B               |
| 26      | 6-780-9501 | Set plate                         |
| 27      | 6-770-0301 | Anti-reverse claw                 |
| 28      | 6-320-8002 | Pinion yoke guide plate ret. ring |
| 29      | 6-780-9701 | Pinion yoke guide plate           |
| 30      | 6-143-9311 | Pinion yoke spring                |
| 31      | 6-402-9502 | Pinion gear                       |
| 32      | 6-635-9201 | Pinion yoke                       |

| Key No. | Parts No.  | Parts Name                |
|---------|------------|---------------------------|
| 33      | 6-780-9601 | Clutch lever              |
| 34      | 6-320-8202 | Clutch ret. ring          |
| 35      | 6-040-4701 | Clutch stopper plate A    |
| 36      | 6-040-4801 | Clutch stopper plate B    |
| 37      | 6-142-8503 | Set plate spring A        |
| 38      | 6-142-8502 | Set plate spring B        |
| 39      | 6-121-6801 | Set plate screw           |
| 40      | 6-780-9902 | Frame                     |
| 41      | 6-151-4111 | Worm shaft lock arm       |
| 42      | 6-710-7711 | Worm shaft                |
| 43      | 6-021-7201 | Shield bush               |
| 44      | 6-634-6111 | Worm shield               |
| 45      | 6-781-0201 | Line guide                |
| 46      | 6-121-4211 | Line guide pin            |
| 47      | 6-375-0800 | Line guide washer         |
| 48      | 6-341-5901 | Line guide nut            |
| 49      | 6-731-2901 | Spool                     |
| 50      | 6-500-8011 | Brake collar              |
| 51      | 6-402-2001 | Spool gear                |
| 52      | 6-320-4202 | Spool gear ret. ring      |
| 53      | 6-781-0324 | Left side cover           |
| 54      | 6-413-0001 | Cog wheel                 |
| 55      | 6-320-8002 | Cog wheel ret. ring       |
| 56      | 6-352-4221 | Left side cover screw     |
| 57      | 6-320-6501 | Bearing metal ret. ring   |
| 58      | 6-634-5311 | Bearing metal             |
| 59      | 6-805-5201 | "O" ring                  |
| 60      | 6-375-2401 | Bearing metal retainer B  |
| 61      | 6-373-7502 | Bearing metal ret. washer |
| 62      | 6-374-7221 | Rubber washer             |
| 63      | 6-342-1001 | Left spool cap            |