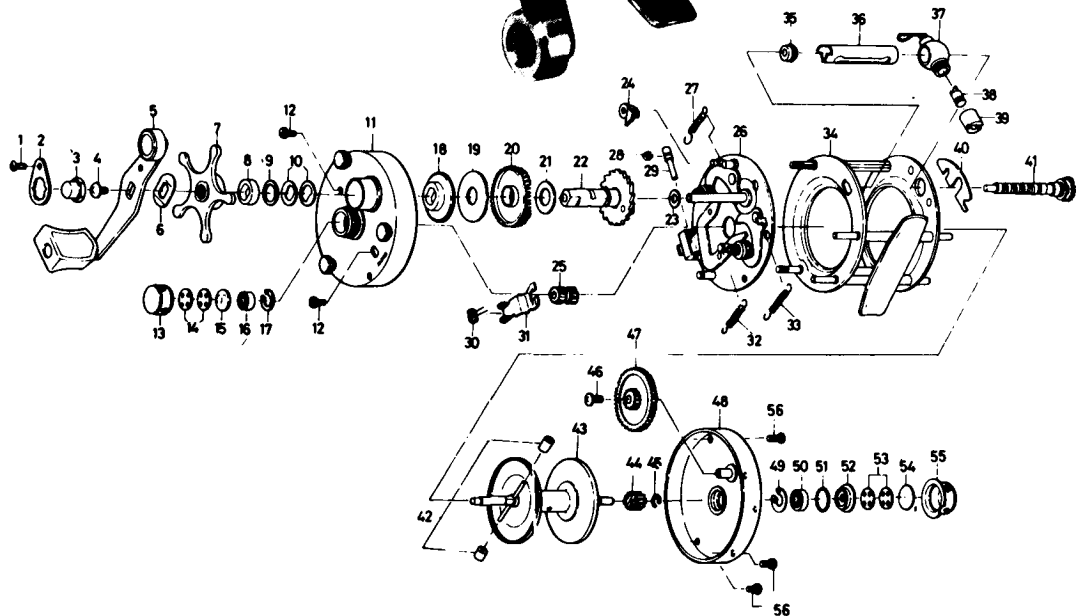


BAITCASTING REEL

Millionaire v



Key No.	Parts No.	Parts Name	Price	Key No.	Parts No.	Parts Name	Price	Key No.	Parts No.	Parts Name	Price
1	63530501	Handle Nut Plate Screw	\$.50	20	64122801	Drive Gear A	\$3.25	39	63415901	Line Guide Nut	\$.50
2	60403201	Handle Nut Plate	.50	21	63737702	Gear Shaft Washer A	.50	40	61509101	Worm Shaft Lock Arm	.50
3	63415801	Handle Nut	.50	22	67101601	Gear Shaft Assembly	3.00	41	67104211	Worm Shaft	3.00
4	63530701	Handle Screw	.50	23	63737611	Gear Shaft Washer B	.15	42	65008001	Brake Collar	.50
5	67451732	Handle Assembly	3.30	24	67700301	Anti Reverse-Claw	1.25	43	67301021	Spool	10.00
6	61509001	Handle Washer	.50	25	64016001	Pinion Gear	2.50	44	64016201	Spool Gear	1.50
7	67800802	Star Drag Assembly	3.00	26	67805421	Set Plate Assembly	9.00	45	63204201	Spool Gear Ret. Ring	.50
8	66345801	Drag Ring	.50	27	61428402	Set Plate Spring A	.50	46	63522201	Cog Wheel Screw	.50
9	63737800	Drag Washer	.50	28	63204201	Pinion Yoke Pin Ret. Ring	.50	47	64122931	Cog Wheel	2.50
10	61508901	Drag Spring Washer	.50	29	61214101	Pinion Yoke Pin	.50	48	67801226	Left Side Cover Assy.	7.00
11	67800522	Right Side Cover Assembly	6.50	30	61428611	Pinion Yoke Spring	.50	49	63206501	Ball Bearing Ret. Ring	.50
12	63524101	Right Side Cover Screw	.50	31	66345711	Pinion Yoke	.60	50	66346701	Ball Bearing	9.50
13	63416011	Right Spool Cap	1.25	32	61428501	Set Plate Spring B	.50	51	61706701	"O" Ring	.50
14	63737501	Ball Bearing Ret. Washer	.50	33	61428401	Set Plate Spring C	.50	52	63207711	Ball Bearing Retainer B	.50
15	63204101	Ball Bearing Retainer A	.50	34	67800911	Frame Assembly	10.00	53	63737501	Ball Bearing Ret. Washer	.50
16	66346701	Ball Bearing	9.50	35	60217201	Shield Bush	.50	54	63747211	Rubber washer	.50
17	63206501	Ball Bearing Ret. Ring	.50	36	66346101	Worm Shield	1.50	55	63420201	Left Spool Cap	1.75
18	62803901	Drag Wheel	1.10	37	67801101	Line Guide	3.00	56	63524201	Left Cover Screw	.50
19	63745801	Drive Gear Washer	.50	38	61214211	Line Guide Pin	1.25				

ALWAYS SPECIFY MODEL NO., PART NAME & PARTS NO. WHEN ORDERING PARTS
PLEASE ENCLOSE CORRECT AMOUNT FOR PART'S PRICE WHEN ORDERING