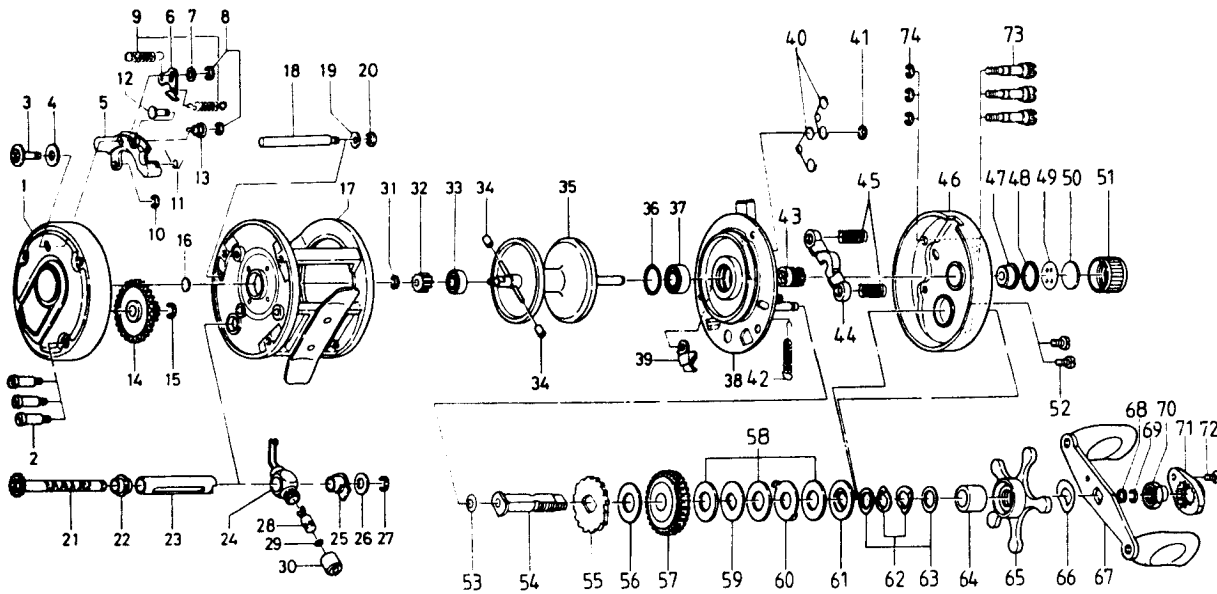


BAITCASTING REEL — Millionaire 5000M / 6000M



Key No.	Part No.	Part Name	Price	Key No.	Part No.	Part Name	Price
1	K16-2301	Left side plate assembly	13.10	43	K15-9101	Pinion gear	7.70
2	K16-9102	Left side plate screw	1.10	44	K15-9001	Yoke	1.15
3	K16-4202	Click button	1.85	45	K15-9401	Yoke spring	.50
4	K16-4101	Click button washer	.50	46	K15-6101	Right side plate assembly	12.50
5	K16-3701	Click set plate	1.60	47	K15-6701	Bush	1.10
6	K16-4301	Click pawl	.90	48	K15-6601	"O" ring	.65
7	K16-4403	Click pawl washer	.30	49	K15-6801	Spacer B	.60
8	320-5901	Click pawl retainer	.50	50	K15-6901	Spool tension spring	.55
9	K16-4501	Click pawl spring	.50	51	K15-7002	Cast control cap	1.80
10	320-5901	Click button retainer	.50	52	K16-0902	Set plate screw	.60
11	K16-4001	Click set plate spring	.60	53	K15-9801	Drive shaft washer A	.50
12	K16-3901	Click set plate pin	.60	54	K15-9901	Drive shaft	4.25
13	K16-3801	Click pawl nut	.80	55	K16-0001	Anti-reverse ratchet	1.30
14	K16-3501	Idle gear	1.10	56	K16-0101	Drive shaft washer B	.60
15	K16-3601	Idle gear retainer	.45	57	K16-0201	Drive gear	12.60
16	K16-4601	Spacer A	.50	58	K16-0102	Drag washer A	1.10
17	K16-4701	Frame assembly	19.00	59	K16-0401	Key washer A	.75
18	K16-7301	Stabilizer bar	2.35	60	K16-0501	Eared washer	.60
19	K15-9801	Stabilizer bar spring washer	.50	61	K16-0601	Key washer B	.95
20	320-5901	Stabilizer bar retainer	.50	62	K16-0701	Drag spring washer	.55
21	K16-6301	Worm shaft	7.00	63	373-7803	Drag washer B	.60
22	K16-6801	Worm bearing A	.70	64	K16-0801	Spacing sleeve	1.05
23	K16-5701	Level wind guard	3.30	65	K16-1001	Star drag	4.85
24	K16-6001	Line guide	5.25	66	K16-1401	Friction washer	.45
25	K16-5901	Worm bearing B	.70	67	K16-1502	Handle assembly	5.50
26	K16-4403	Worm shaft holder washer	.30	68	K16-1801	Handle nut washer	.45
27	320-5901	Worm shaft retainer	.50	69	K16-1901	Handle nut retainer	.45
28	K16-7001	Line guide pawl	2.85	70	K16-2002	Handle nut	2.10
29	K16-7101	Line guide washer	.50	71	K16-2101	Handle nut plate	.75
30	K16-7201	Pawl cap	1.65	72	351-1803	Handle nut plate screw	.45
31	B33-9801	Bearing retainer	.35	73	K15-6502	Right side plate screw	1.25
32	K16-8801	Spool gear	1.35	74	320-5901	Right side plate screw retainer	.50
33	K16-8701	Ball bearing	9.60				
34	K16-9001	Brake collar	.75				
35	K16-7601	Spool assembly	22.00				
36	K15-8501	"O" ring	.75				
37	K15-8701	Ball bearing	8.25				
38	K15-7201	Set plate assembly	14.50				
39	K15-9501	Anti-reverse pawl	2.30				
40	K15-8801	Set plate spring A	.60				
41	320-1402	Clutch retaining ring	.40				
94	42	K15-8901	Set plate spring B	.70			

6000M Special Parts:

1	K16-2302	Left side plate assembly	13.10
17	K16-4801	Frame assembly	20.00
18	K16-7401	Stabilizer bar	2.10
21	K16-6401	Worm shaft	7.50
23	K16-5801	Level wind guard	3.70
35	K16-7801	Spool assembly	23.00
46	K15-6102	Right side plate assembly	12.50