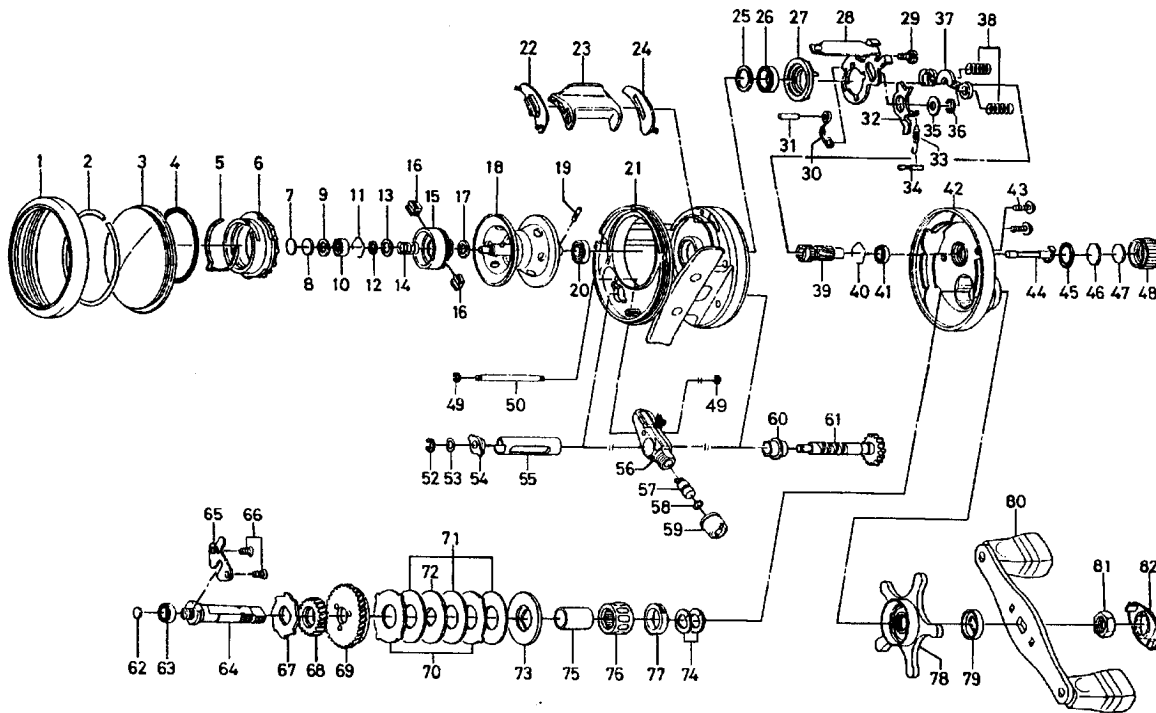


BAITCASTING REEL MILLIONAIRE-CV-X103A



| Key No. | Parts No. | Parts Name | Key No. | Parts No. | Parts Name |
|---------|-----------|------------------------|---------|-----------|-----------------------|
| 1 | G00-2202 | L/S OUTER RING | 46 | B17-5401 | SPOOL ADJ CAP METAL |
| 2 | G00-1301 | BEARING RET A | 47 | B17-5503 | SPACER D |
| 3 | G05-0801 | L/S PLT | 48 | F57-4403 | CAST CONTROL CAP |
| 4 | G00-2301 | O RING A | 49 | B86-4101 | STABILIZER BAR RET |
| 5 | F79-8001 | BRAKE CLICK SPRING | 50 | F97-3201 | STABILIZER BAR |
| 6 | G00-2401 | BRAKE ADJ KNOB | 52 | 320-5901 | WORM SHAFT RET |
| 7 | 375-7404 | SPACER A | 53 | 373-1303 | WORM SHAFT WASHER |
| 8 | 375-7411 | SPACER B | 54 | F79-5801 | WORM SHAFT HOLDER A |
| 9 | F57-4303 | SPACER C | 55 | F79-5101 | WORM SHIELD |
| 10 | E08-8003 | BALL BEARING A | 56 | G05-0402 | LINE GUIDE |
| 11 | E21-9701 | BEARING RET B | 57 | F96-6001 | LINE GUIDE PAWL |
| 12-20 | G05-1601 | SPOOL | 58 | 375-4101 | LINE GUIDE WASHER |
| 21 | G05-0201 | FRAME | 59 | F40-2803 | PAWL CAP |
| 22 | G00-0302 | CLUTCH LEVER PLT A | 60 | F79-5501 | WORM SHAFT HOLDER B |
| 23 | G00-0404 | CLUTCH LEVER | 61 | F84-9102 | WORM SHAFT |
| 24 | G00-0202 | CLUTCH LEVER PLT B | 62 | F57-5601 | DRIVE SHAFT WASHER |
| 25 | F79-3401 | CLUTCH CAM RET | 63 | B55-0301 | BUSHING B |
| 26 | B86-1702 | BALL BEARING B | 64 | G02-2501 | DRIVE SHAFT |
| 27 | F79-3501 | CLUTCH CAM | 65 | G00-0801 | DRIVE SHAFT RET |
| 28 | G00-0501 | YOKE PLT | 66 | E13-4501 | DRIVE SHAFT RET SCREW |
| 29 | F79-3801 | CLUTCH CAM SCREW | 67 | F76-1701 | A/R RATCHET |
| 30 | F79-4501 | CLUTCH SPRING | 68 | G00-1501 | DRIVE GEAR A |
| 31 | F79-4401 | PIN A | 69 | G00-1601 | DRIVE GEAR B |
| 32 | G00-0601 | CLUTCH TRIP PLT | 70 | F79-6101 | EARED WASHER |
| 33 | F79-4701 | CLUTCH TRIP PLT SPRING | 71 | F96-7801 | DRAG WASHER |
| 34 | F79-4601 | PIN B | 72 | F79-6301 | KEY WASHER A |
| 35 | 371-6905 | CLUTCH TRIP PLT WASHER | 73 | B36-0303 | KEY WASHER B |
| 36 | 320-1402 | CLUTCH TRIP PLT RET | 74 | 150-8901 | DRAG SPRING WASHER |
| 37 | F79-4801 | YOKE | 75 | G05-3001 | GEAR SHAFT COLLAR |
| 38 | F79-4901 | YOKE SPRING | 76 | F99-9801 | ROLLER CLUTCH |
| 39 | F80-1501 | PINION GEAR | 77 | G05-2801 | DRAG COLLAR |
| 40 | E21-9701 | BEARING RET C | 78 | G05-0601 | STAR DRAG |
| 41 | F64-8301 | BUSHING A | 79 | F85-0401 | FRICITION WASHER |
| 42 | G05-0003 | R/S PLT | 80 | G05-0701 | HANDLE |
| 43 | B67-9304 | R/S PLT SCREW | 81 | F84-9901 | HANDLE NUT |
| 44 | F80-0501 | PINION SHAFT | 82 | F85-0004 | HANDLE NUT RET |
| 45 | 171-5201 | O RING B | | | |