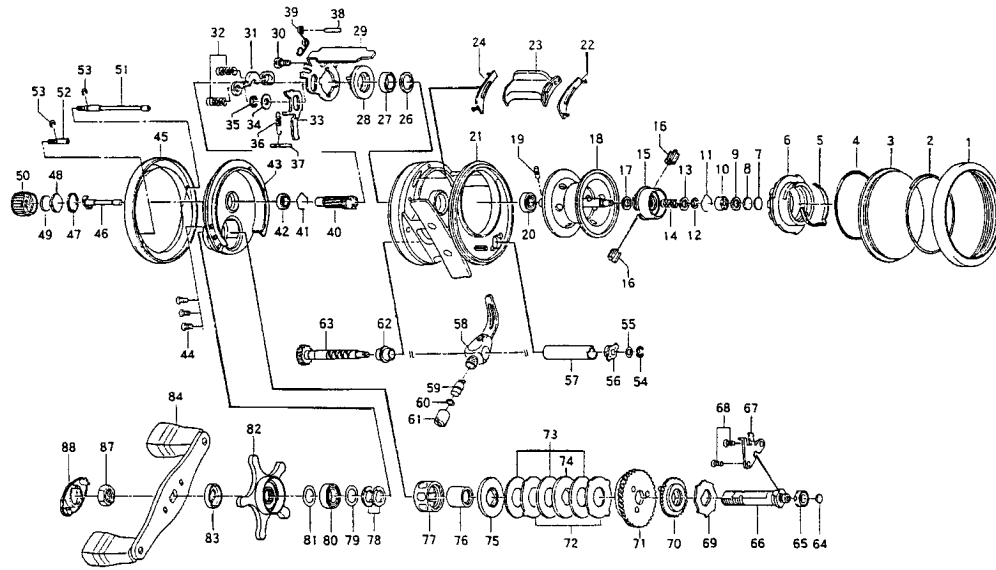


# MILLIONAIRE CV-Z203LA / 253LA



Key No.	Parts No.	Parts Name	Key No.	Parts No.	Parts Name
1	F79-8101	R/S OUTER RING	54	320-5901	WORM SHAFT RET
2	F79-8201	BEARING RET A	55	373-1303	WORM SHAFT WASHER
3	G00-4201	R/S PLT	56	F79-5801	WORM SHAFT HOLDER A
4	F79-8301	O RING A	57	F79-5101	LEVEL WIND GUARD
5	F79-8001	BRAKE CLICK SPRING	58	F79-5201	LINE GUIDE
6	F79-7601	BRAKE ADJ KNOB	59	121-4212	LINE GUIDE PAWL
7	375-7404	SPACER A	60	375-4101	LINE GUIDE WASHER
8	375-7411	SPACER B	61	341-5901	PAWL CAP
9	F57-4303	SPACER C	62	F79-5501	WORM SHAFT HOLDER B
10	E08-8003	BALL BEARING	63	F84-9101	WORM SHAFT
11	E21-9701	BEARING RET B	64	F57-5601	DRIVE SHAFT WASHER
12-20	Z01-1474	SPOOL	65	B35-8605	BALL BEARING C
21	F99-6901	FRAME	66	F84-9002	DRIVE SHAFT
22	F79-3201	CLUTCH LEVER PLT A	67	F99-8001	DRIVE SHAFT RET
23	F99-7502	CLUTCH LEVER	68	E13-4501	DRIVE SHAFT RET SCREW
24	F79-3301	CLUTCH LEVER PLT B	69	F76-1701	A/R RATCHET
26	F79-3401	CLUTCH CAM RET	70	F79-5901	DRIVE GEAR A
27	B86-1702	BALL BEARING A	71	F99-8501	DRIVE GEAR B
28	F99-7401	CLUTCH CAM	72	F79-6101	EARED WASHER
29	F99-7701	YOKE PLT	73	F79-6201	DRAG WASHER
30	F79-3801	CLUTCH CAM SCREW	74	F79-6301	KEY WASHER A
31	F99-8201	YOKE	75	F79-6401	KEY WASHER B
32	F79-4901	YOKE SPRING	76	F79-6501	GEAR SHAFT COLLAR
33	F99-7901	CLUTCH TRIP PLT	77	F55-2703	ROLLER CLUTCH
34	371-6903	CLUTCH TRIP PLT WASHER	78	150-8901	DRAG SPRING WASHER
35	320-1402	CLUTCH TRIP PLT RET	79	B55-3801	BEARING WASHER A
36	F79-4701	CLUTCH TRIP PLT SPRING	80	F05-5502	BALL BEARING D
37	F79-4601	PIN A	81	373-7810	BEARING WASHER B
38	F79-4401	PIN B	82	F84-9202	STAR DRAG
39	F99-8101	CLUTCH SPRING	83	F85-0401	COLLAR
40	F99-8301	PINION GEAR	84	F84-9601	HANDLE
41	E21-9701	BEARING RET C	87	F84-9902	HANDLE NUT
42	F05-5601	BALL BEARING B	88	F85-0001	HANDLE NUT RET
43	F99-6203	L/S PLT			
44	E13-4505	L/S PLT SCREW A			
45	F99-8701	L/S OUTER RING			
46	F80-0501	PINION SHAFT			
47	171-5201	O RING B			
48	B17-5401	SPOOL ADJ CAP METAL			
49	B17-5503	SPACER D			
50	F57-4403	CAST CONTROL CAP			
51	F79-4201	L/S PLT SCREW B			
52	F79-4301	L/S PLT SCREW C			
53	F55-0501	L/S PLT SCREW RET			
41	E21-9701	BEARING RET C			

<i>M-CV-Z253LA Special parts</i>		
Key No.	Parts No.	Parts Name
12-20	Z01-1477	SPOOL
21	F99-7101	FRAME
23	F99-7602	CLUTCH LEVER
29	F99-7801	YOKE PLT
43	F99-6205	L/S PLT
51	F82-0001	L/S PLT SCREW B
57	F81-9901	LEVEL WIND GUARD
63	F81-9401	WORM SHAFT