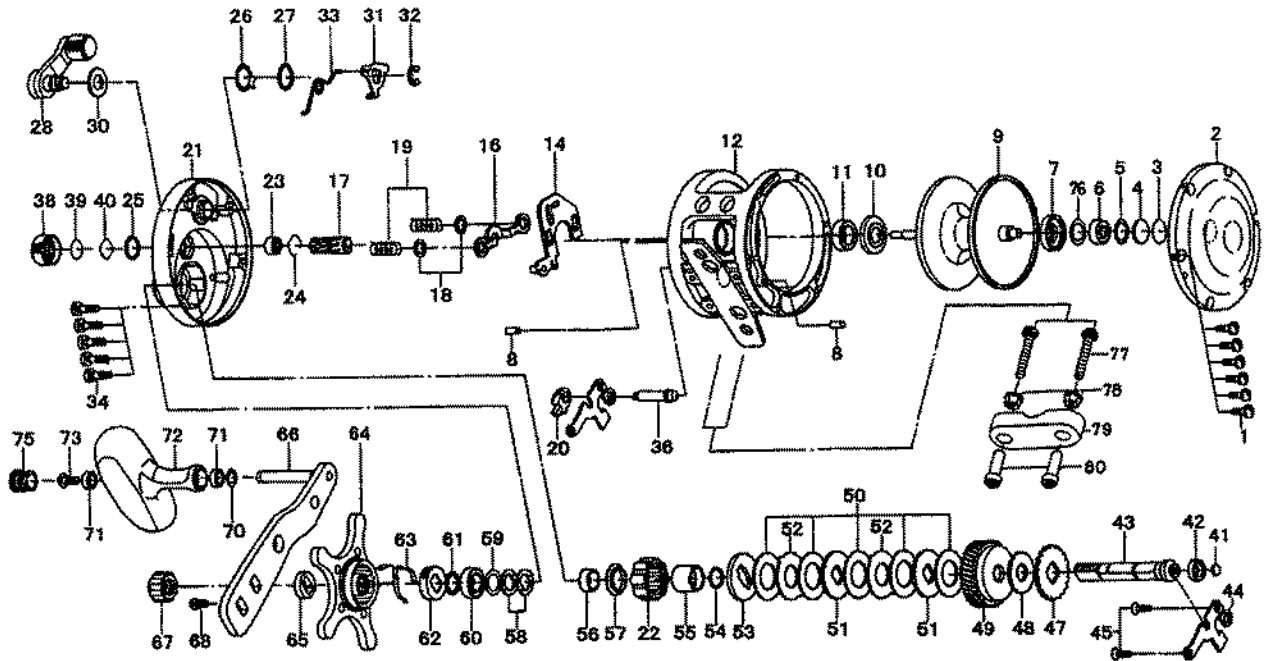


SALTIGA 30L



Key No.	Parts No.	Parts Name	Key No.	Parts No.	Parts Name
1	G04-0803	R/S PLT SCREW	42	G33-0301	BUSHING
2	G39-5801	R/S PLT	43	G21-2602	DRIVE SHAFT
3	G27-6300	BEARING WASHER A	44	G39-5901	DRIVE SHAFT RET
4	G21-2401	BEARING WASHER B	45	G21-2901	DRIVE SHAFT RET SCREW
5	F95-6702	BEARING WASHER C	47	G21-3901	A/R RATCHET
6	637-2101	BALL BEARING A	48	G21-4101	DRIVE SHAFT WASHER B
7	G22-0501	WATER SHIELD A	49	G39-6901	DRIVE GEAR
8	G21-1701	PIN	50	G29-0801	DRAG WASHER
9	G45-1201	SPOOL	51	B36-0301	KEY WASHER A
10	G21-1901	WATER SHIELD B	52	372-3835	EARED WASHER
11	F05-5503	BALL BEARING B	53	G21-4401	KEY WASHER B
12	G45-1001	FRAME	54	F65-7801	O RING C
14	G39-6301	YOKE PLT	55	G29-0901	COLLAR A
16	G21-3601	YOKE	56	G21-6901	COLLAR B
17	G39-6601	PINION GEAR	57	G21-7001	WATER SHIELD C
18	E03-7706	YOKE WASHER	58	150-8901	DRAG SPRING WASHER
19	F93-5201	YOKE SPRING	59	373-7812	BALL BEARING COLLAR
20	E48-9001	A/R PAWL	60	F05-5502	BALL BEARING D
21	G45-1401	L/S PLT	61	F36-6801	BEARING WASHER D
22	F55-2703	HANDLE METAL	62	G21-7101	CLICK LEAF SPRING HOLDER
23	E08-8003	BALL BEARING C	63	F97-7801	CLICK LEAF SPRING
24	E21-9701	BEARING RET A	64	G39-8001	STAR DRAG
25	171-5201	O RING A	65	G21-7601	SPACING SLEEVE
26	G21-5301	CLUTCH CAM RET	66	G21-7801	HANDLE ARM
27	171-5201	O RING B	67	G22-0302	HANDLE NUT
28	G39-7601	CLUTCH LEVER	68	G21-8201	HANDLE NUT SCREW
30	G15-7001	CLUTCH LEVER WASHER	70	375-3000	HANDLE KNOB WASHER
31	G39-7801	CLUTCH CAM	71	F05-5601	BALL BEARING E
32	320-7601	CLUTCH CAM WASHER	72	G16-4001	HANDLE KNOB
33	G45-0701	CLUTCH CAM SPRING	73	E45-4003	HANDLE KNOB SCREW A
34	G33-0601	L/S PLT SCREW	75	G16-4402	HANDLE KNOB SCREW B
36	G21-2701	A/R PAWL PIN	76	F13-2602	BEARING WASHER E
38	G21-8301	CAST CONTROL CAP	77	F18-7601	CLAMP BOLT
39	B17-5503	SPACER A	78	F18-7801	ROD BRACE NUT
40	B17-5401	SPACER B	79	G35-8401	ROD CLAMP
41	F57-5601	DRIVE SHAFT WASHER A	80	F18-7701	CLAMP NUT