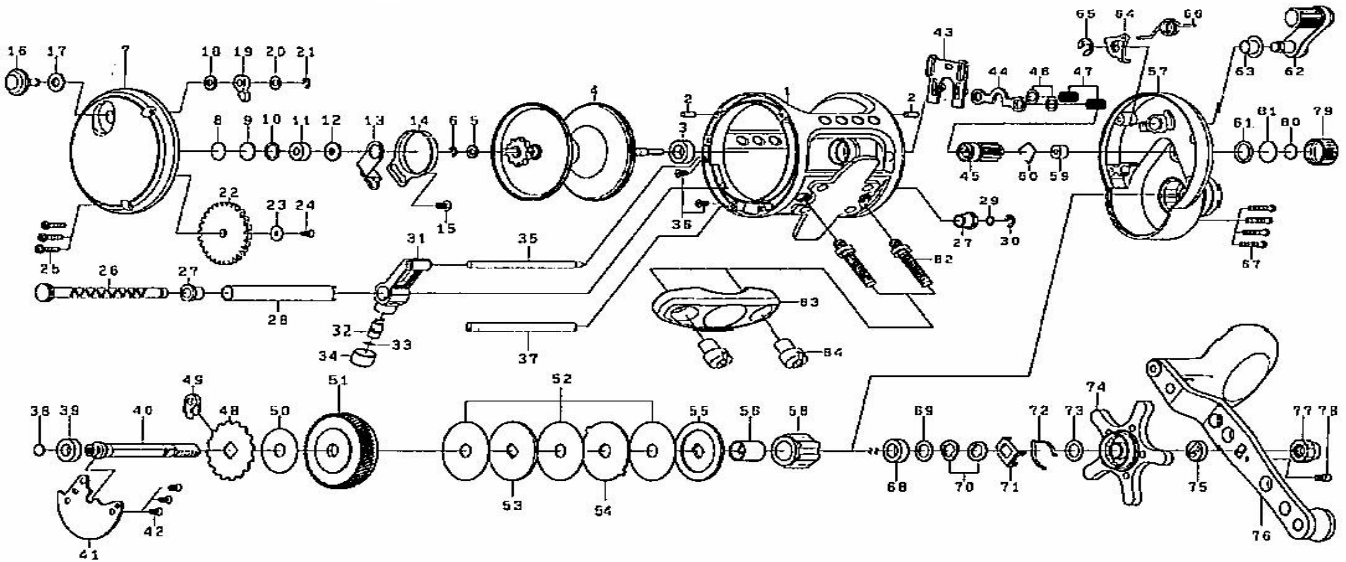


Please order by parts number, not key number
Veillez indiquer le numéro de la pièce (Non "Key" No.)



CONVENTIONAL REEL

SALTIST LW20HA · LW30HA



Key No.	Parts No.	Parts Name	Key No.	Parts No.	Parts Name
1	E63-4701	Frame assembly	48	E63-8201	Anti-reverse ratchet
2	G21-1701	Pin	49	E48-9001	Anti-reverse pawl
3	G42-7201	Ball bearing (A)	50	E62-5101	Drive shaft washer (B)
4	E63-4901	Spool assembly	51	E62-2901	Drive gear
5	E62-8201	Spool gear	52	E62-3002	Drag washer
6	320-1402	Spool gear retainer	53	E62-3101	Kay washer (A)
7	E63-5101	Left side plate	54	E62-3201	Eared washer
8	G27-6300	Bearing washer (A)	55	E62-7301	Key washer (B)
9	G21-2401	Bearing washer (B)	56	E61-0701	Collar
10	F95-6702	Bearing washer (C)	57	E63-6401	Right side plate
11	G42-7701	Bail bearing (B)	58	E63-3301	Handle metal
12	E61-0501	Bearing washer (D)	59	E60-8801	Bushing
13	E63-5201	Click spring retainer	60	F03-2201	Bushing retainer
14	E62-4601	Click spring	61	B05-5201	"O" ring
15	351-7701	Click spring screw	62	E62-3601	Clutch lever
16	E63-5301	Click button	63	E62-5401	Clutch lever collar
17	E61-7301	Click button washer (A)	64	E62-6701	Clutch cam
18	E61-7401	Click button washer (B)	65	320-7601	Clutch cam retainer
19	E62-4801	Click pawl	66	E62-5501	Clutch cam spring
20	373-1600	Click button washer (C)	67	E63-4301	Right side plate screw
21	320-1402	Click pawl retainer	68	G52-3403	Ball bearing (D)
22	E63-5401	Idle gear	69	E60-8901	Bearing washer (E)
23	375-3005	Idle gear washer	70	E25-3501	Drag spring washer
24	E45-4003	Idle gear screw	71	G58-8601	Click leaf spring holder
25	E62-7202	Left side plate screw	72	F03-2401	Click leaf spring
26	E63-5501	Worm shaft assembly	73	G69-4201	Washer
27	E57-3601	Worm shaft bush	74	E62-3801	Star drag
28	E63-5701	Level wind guard	75	E60-5101	Spacing sleeve
29	E62-9301	Worm shaft washer	76	E63-6601	Handle assembly
30	320-7601	Worm shaft retainer	77	G22-0301	Handle nut
31	E57-3101	Line guide assembly	78	G21-8201	Handle nut screw
32	E57-4001	Line guide pawl	79	E61-0901	Cast control cap
33	F95-0200	Line guide washer	80	B17-5503	Spacer (A)
34	E57-4101	Pawl cap	81	375-7501	Spacer (B)
35	E63-5801	Stabilizer bar (A)	82	E62-4501	Clamp bolt
36	352-0601	Stabilizer bar screw	83	E62-4401	Rod clamp
37	E63-5901	Stabilizer bar (B)	84	E62-6101	Clamp nut
38	F73-3501	Drive shaft washer (A)	SALTIST LW30HA SPECIAL PARTS		
39	G27-9601	Ball bearing (C)	Key No.		Parts Name
40	E63-6001	Drive shaft	1	E63-7001	Frame assembly
41	E62-2601	Drive shaft retainer	4	E63-7201	Spool assembly
42	G21-2901	Drive shaft retainer screw	26	E63-7501	Worm shaft assembly
43	E63-6101	Yoke plate	28	E63-7701	Level wind guard
44	E62-4901	Yoke	35	E63-7801	Stabilizer bar (A)
45	E62-2801	Pinion gear	37	E63-7901	Stabilizer bar (B)
46	E61-5101	Yoke washer	57	E63-8101	Right side plate
47	F93-5201	Yoke spring			