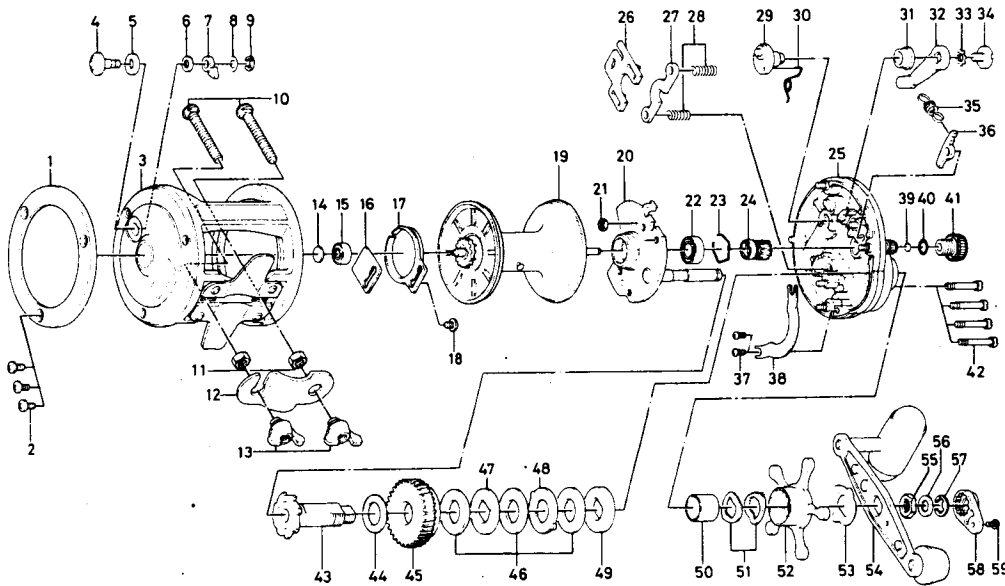


# CONVENTIONAL REEL Sealine 30SH



Key No.	Parts No.	Parts Name	Price Each	Key No.	Parts No.	Parts Name	Price Each
1	B12-0101	L.S. ring	2.05	31	B35-2501	Clutch lever screw holder	0.55
2	353-6201	L.S. plate screw	0.50	32	B12-0401	Clutch lever	0.90
3	B93-5301	Frame	13.00	33	160-8001	Clutch lever lock washer	0.40
4	541-6501	Click button	1.15	34	363-5301	Clutch lever screw	0.80
5	375-9301	Click button washer	0.40	35	145-2801	Anti-reverse claw spring	0.50
6	375-1101	Click claw washer A	0.40	36	B62-6801	Anti-reverse claw	0.70
7	030-6611	Click claw	0.85	37	B62-7201	Cover plate	0.75
8	373-1600	Click claw washer B	0.40	38	B55-7601	Cover plate screw	0.35
9	320-1402	Click claw retainer	0.40	39	B75-6101	Spool adjusting cap metal	0.50
10	353-9801	Rod clamp screw	0.80	40	B02-1901	Friction ring	0.45
11	341-9701	Rod clamp nut	0.50	41	B62-6301	Spool adjusting cap	1.40
12	041-5601	Rod clamp	1.25	42	B34-3301	Set plate screw	0.50
13	342-2111	Rod clamp wing nut	1.10	43	B12-1101	Gear shaft	6.30
14	375-7403	Ball bearing metal washer	0.40	44	375-2901	Drive gear washer	0.40
15	633-8811	Ball bearing	6.00	45	B62-7101	Drive gear	8.95
16	B12-2101	Click spring retainer	0.55	46	375-9903	Drag washer A	1.15
17	160-7922	Click spring	1.25	47	376-3401	Drag washer B	0.60
18	351-7701	Click spring screw	0.50	48	376-3501	Drag washer C	0.55
19	B12-2202	Spool	9.50	49	376-3403	Drag washer D	0.60
20	B62-6901	Set plate	6.65	50	B26-8401	Spacing sleeve	0.65
21	B03-7201	Set plate screw retaining nut	0.50	51	151-8701	Tension spring	0.75
22	636-6401	Ball bearing	6.45	52	782-5304	Star drag	2.55
23	170-7701	Ball bearing retainer	0.40	53	B17-2801	Handle washer	0.45
24	B62-6601	Pinion gear	5.05	54	B62-7301	Handle	6.90
25	B62-6101	R.S. plate	5.20	55	B26-7403	Handle nut	0.40
26	041-5701	Eccentric jack	1.00	56	371-0605	Handle nut washer	0.35
27	041-5801	Pinion yoke	0.80	57	320-7601	Handle nut retainer	0.40
28	145-2411	Clutch spring	0.50	58	B15-2301	Handle nut plate	0.60
29	B12-0301	Eccentric cam	1.90	59	351-1801	Handle nut plate screw	0.50
30	B12-0601	Eccentric cam spring	0.50				