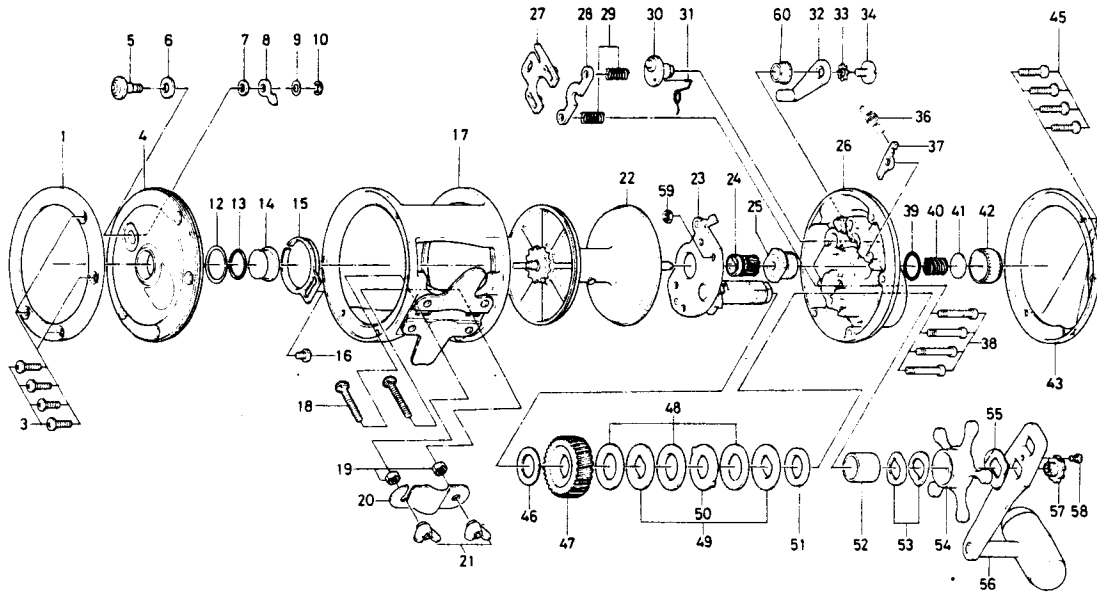


Conventional Reel

Sealine 350H & 350HW*



*SPECIAL PART FOR 350HW – STAINLESS STEEL SPOOL

Key No.	Parts No.	Parts Name	Key No.	Parts No.	Parts Name
1	6-171-6501	L. S. ring	31	6-145-2501	Eccentric cam spring
3	6-353-5101	L. S. plate screw	32	6-782-5001	Clutch lever
4	6-760-5107	L. S. plate for 350H	33	6-160-8001	Clutch lever lock washer
5	6-541-6501	Click button	34	6-363-5301	Clutch lever screw
6	6-375-9301	Click button washer	36	6-145-2801	Anti-reverse claw spring
7	6-375-1101	Click claw washer A	37	6-B12-0701	Anti-reverse claw
8	6-030-6221	Click claw	38	6-B40-3001	Set plate screw
9	6-373-1600	Click claw washer B	39	6-171-1001	Friction ring
10	6-320-1402	Click claw retainer	40	6-145-3101	Spool adjusting spring
12	6-375-9802	Case metal washer	41	6-375-7501	Spool adjusting cap metal
13	6-171-1001	Friction ring	42	6-382-0301	Spool adjusting cap
14	6-720-2711	Case metal	43	6-171-6401	R. S. ring
15	6-160-7922	Click spring	45	6-353-5101	R. S. plate screw
16	6-351-7701	Click spring screw	46	6-375-2901	Drive gear washer
17	6-701-7502	Frame	47	6-413-9711	Drive gear
18	6-353-9801	Rod clamp screw	48	6-375-9902	Drag washer A
19	6-341-9701	Rod clamp nut	49	6-376-3401	Drag washer B
20	6-041-5601	Rod clamp	50	6-376-3501	Drag washer C
21	6-342-2111	Rod clamp wing nut	51	6-376-3601	Drag washer D
22	6-734-4003	Spool for 350H	52	6-501-9311	Spacing sleeve
23	6-782-5502	Set plate	53	6-151-8701	Drag spring washer
24	6-750-6111	Pinion gear	54	6-782-5304	Star drag
25	6-720-2321	Ball bearing metal	55	6-151-9701	Handle washer
26	6-560-7913	R. S. plate	56	6-747-4211	Handle
27	6-041-5701	Eccentric jack	57	6-780-7502	Handle screw
28	6-041-5801	Pinion yoke	58	6-353-2811	Handle lock screw
29	6-145-2411	Clutch spring	59	6-B03-7201	Set plate screw retaining nut
30	6-461-6801	Eccentric cam	60	6-B35-2601	Clutch lever screw holder