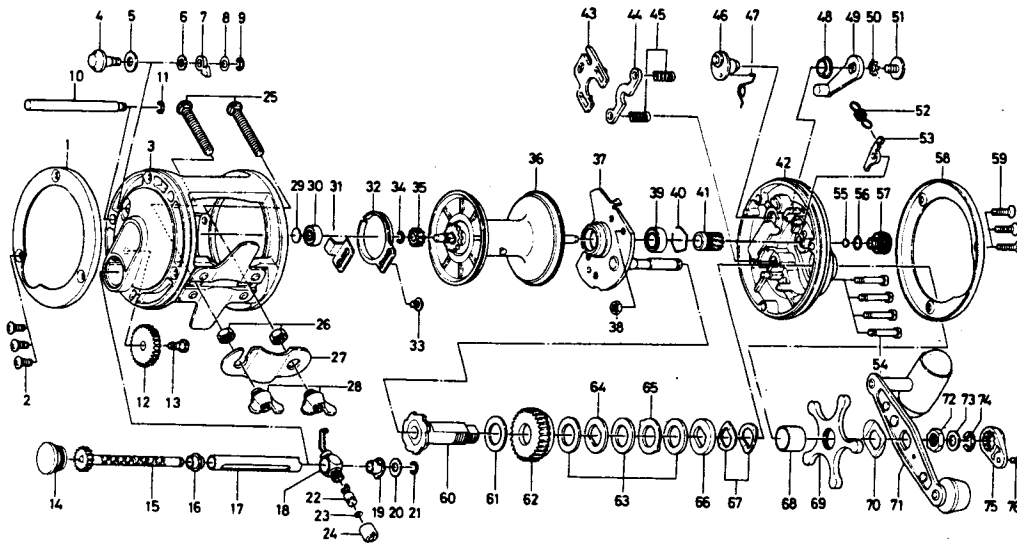


Conventional Reel

Sealine 47H



Key No.	Parts No.	Parts Name
1	6-B21-5401	L. S. ring
2	6-354-0801	L. S. plate screw
3	6-B21-5101	Frame
4	6-B21-6601	Click button
5	6-375-9301	Click button washer
6	6-375-1101	Click claw washer A
7	6-030-6611	Click claw
8	6-373-1600	Click claw washer B
9	6-320-1402	Click claw retainer
10	6-B21-6301	Frame post
11	6-320-1402	Frame post retainer
12	6-B21-5801	Cog wheel
13	6-351-1801	Cog wheel screw
14	6-B40-6701	Left side cap
15	6-B21-5901	Worm shaft
16	6-B10-0301	Worm shaft holder
17	6-B21-6201	Worm shield
18	6-B21-6401	Line guide
19	6-B09-9701	Shield bush
20	6-373-1302	Worm shaft holder washer
21	6-320-5901	Worm shaft retainer
22	6-121-4211	Line guide pin
23	6-375-0800	Line guide washer
24	6-341-5901	Line guide nut
25	6-353-9801	Rod clamp screw
26	6-341-9701	Rod clamp nut
27	6-041-5601	Rod clamp
28	6-342-2111	Rod clamp wing nut
29	6-375-7403	Ball bearing metal washer
30	6-633-8811	Ball bearing
31	6-B21-5501	Click spring retainer
32	6-160-7922	Click spring
33	6-352-9501	Click spring screw
34	6-320-5901	Spool gear ret. ring
35	6-403-2901	Spool gear
36	6-B21-5601	Spool
37	6-B12-0801	Set plate
38	6-B03-7201	Set plate screw retaining nut

Key No.	Parts No.	Parts Name
39	6-636-6401	Ball bearing
40	6-170-7701	Ball bearing retaining ring
41	6-750-6012	Pinion gear
42	6-B21-4701	R. S. plate
43	6-041-5701	Eccentric jack
44	6-041-5801	Pinion yoke
45	6-145-2411	Clutch spring
46	6-B12-0301	Eccentric cam
47	6-145-2501	Eccentric cam spring
48	6-B35-2501	Clutch lever screw holder
49	6-782-5401	Clutch lever
50	6-160-8001	Clutch lever lock washer
51	6-363-5301	Clutch lever screw
52	6-145-2801	Anti-reverse claw spring
53	6-B12-0701	Anti-reverse claw
54	6-B34-3301	Set plate screw
55	6-B12-0201	Spool adjusting cap metal
56	6-637-0601	"O" ring
57	6-B12-7801	Spool adjusting cap
58	6-B21-4901	R. S. ring
59	6-353-5203	R. S. plate screw
60	6-B12-1101	Gear shaft
61	6-375-2901	Drive gear washer
62	6-B12-1401	Drive gear
63	6-B12-1501	Drag washer A
64	6-375-6203	Drag washer B
65	6-375-6302	Drag washer C
66	6-375-6204	Drag washer D
67	6-151-8701	Tension spring
68	6-B36-5101	Spacing sleeve
69	6-B21-5001	Star drag
70	6-B17-2801	Handle washer
71	6-B12-1603	Handle
72	6-B26-7401	Handle nut
73	6-371-0604	Handle nut washer
74	6-320-5901	Handle nut retainer
75	6-B15-2301	Handle nut plate
76	6-351-1801	Handle nut plate screw