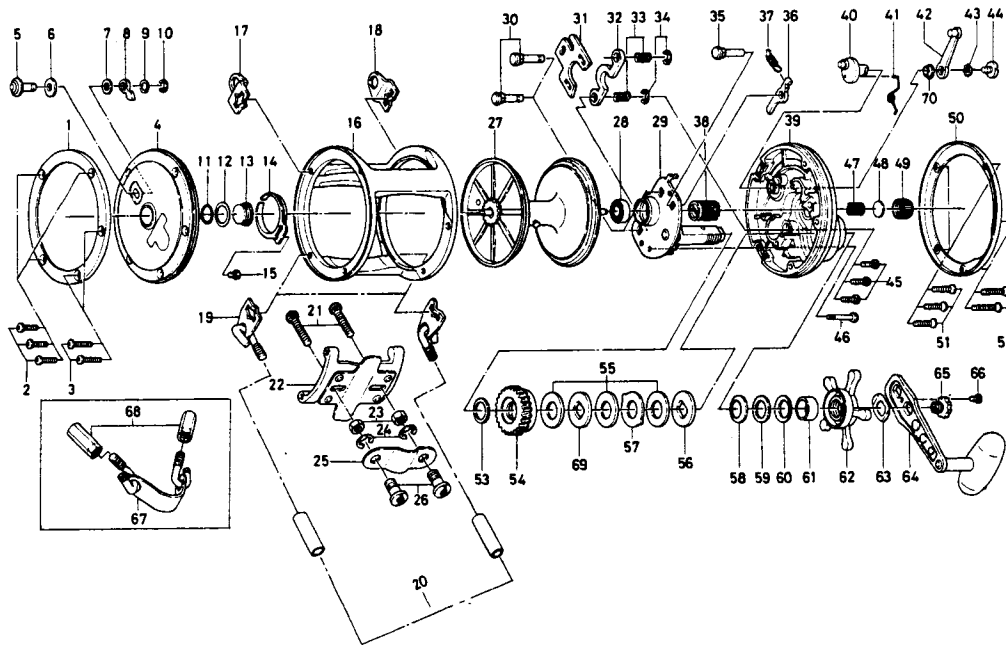


## Conventional Reel

## Sealine 900H



Key No.	Parts No.	Parts Name	Key No.	Parts No.	Parts Name
1	6-171-8101	L. S. ring	36	6-111-9301	Anti-reverse claw
2	6-354-1601	L. S. plate screw A	37	6-144-9511	Anti-reverse claw spring
3	6-B19-1101	L. S. plate screw B	38	6-750-6501	Pinion gear
4	6-760-7203	L. S. plate for 900H	39	6-760-7302	R. S. plate
5	6-541-6311	Click button	40	6-461-6911	Eccentric cam
6	6-375-9201	Click button washer	41	6-144-4701	Eccentric cam spring
7	6-375-9301	Click claw washer A	42	6-781-8621	Clutch lever
8	6-030-6111	Click claw	43	6-160-8001	Clutch lever lock washer
9	6-373-2700	Click claw washer B	44	6-363-5301	Clutch lever screw
10	6-320-7601	Click claw retainer	45	6-353-9701	Set plate screw A
11	6-171-1001	Friction ring	46	6-B15-9101	Set plate screw B
12	6-375-9802	Case metal washer	47	6-145-3101	Spool adjusting spring
13	6-720-2711	Case metal	48	6-375-7501	Spool adjusting cap metal
14	6-160-7802	Click spring	49	6-382-0301	Spool adjusting cap
15	6-352-2201	Click spring screw	50	6-171-8001	R. S. ring
16	6-701-7302	Frame	51	6-354-1601	R. S. plate screw A
17	6-041-9501	Harness lug	52	6-B19-1101	R. S. plate screw B
18	6-041-9501	Harness lug	53	6-370-4512	Drive gear washer
19	6-783-3101	Rod brace lug	54	6-414-3002	Drive gear
20	6-B22-8801	Brace lug protector	55	6-376-4701	Drag washer A
21	6-364-1101	Rod clamp screw	56	6-376-4801	Drag washer D
22	6-783-3001	Stand	57	6-376-4901	Drag washer C
23	6-341-9701	Rod clamp nut	58	6-151-5212	Tension spring
24	6-321-1101	Clamp retainer	59	6-375-3511	Drag spring washer
25	6-041-9901	Rod clamp	60	6-151-5211	Tension spring
26	6-342-5301	Rod clamp locking nut	61	6-501-8911	Spacing sleeve
27	6-734-7401	Spool for 900H	62	6-782-4502	Star drag
28	6-637-6101	Ball bearing	63	6-151-9801	Handle washer
29	6-783-3302	Set plate	64	6-748-1101	Handle
30	6-051-5611	Set plate pin A	65	6-781-2301	Handle screw
31	6-041-9401	Eccentric jack	66	6-353-2811	Handle lock screw
32	6-041-4801	Pinion yoke	67	6-783-3201	Rod brace
33	6-144-8101	Clutch spring	68	6-342-5201	Rod brace nut
34	6-320-1611	Clutch spring retainer	69	6-376-4802	Drag washer B
35	6-051-5511	Set plate pin B	70	6-B35-2601	Clutch lever screw holder