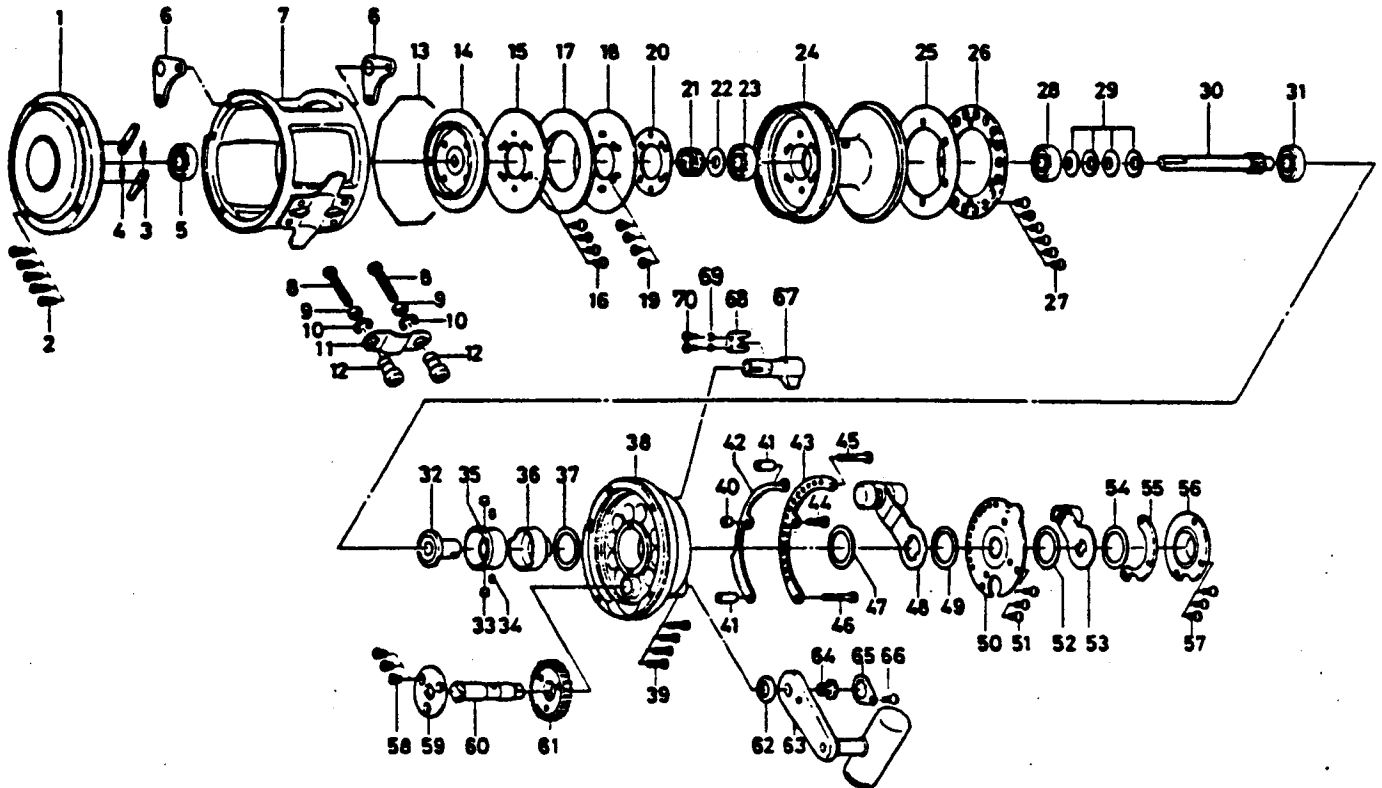


CONVENTIONAL LEVER-DRAG OCEAN REEL SEALINE TOURNAMENT SLT 30



Key No.	Part No.	Parts Name	Price Each	Key No.	Part No.	Parts Name	Price
1	B88-6701	Left side plate	56.00	36	B88-2701	Eccentric cam B	22.80
2	B83-1501	Left side plate screw	0.35	37	B69-5502	Eccentric cam washer	0.45
3	B70-4401	Anti-reverse pawl	0.85	38	B88-2201	Right side plate	93.75
4	144-8701	Anti-reverse pawl spring	0.50	39	B83-1501	Right side plate screw	0.35
5	B88-3001	Ball Bearing	9.05	40	B88-5301	Quadrant ring collar (short)	0.35
6	B88-5201	Harness lug	2.80	41	B70-2501	Quadrant ring collar (long)	0.65
7	B88-4801	Frame	112.40	42	B88-5501	Quadrant ring A	3.00
8	364-1101	Clamp bolt	0.80	43	B88-5402	Quadrant ring B	5.80
9	B11-0902	Clamp nut	0.90	44	B99-8201	Quadrant ring screw A	0.35
10	321-1101	Clamp retainer	0.40	45	B83-2401	Quadrant ring screw B	0.65
11	B88-7001	Rod brace	1.45	46	B83-2501	Quadrant ring screw C	0.65
12	342-5301	Rod brace nut	1.50	47	B69-5502	Drag lever washer A	0.45
13	B88-6601	Spool retainer	0.65	48	B92-2201	Drag lever A	9.55
14	B70-3702	Ratchet plate	17.35	49	B69-5502	Drag lever washer B	0.45
15	B88-6301	Metal drag washer A	7.65	50	B88-3301	Pre-set plate	11.30
16	B70-3401	Metal drag washer screw A	0.40	51	353-1201	Bridge cover screw	0.50
17	B88-6501	Drag washer	5.60	52	B69-5502	Drag lever washer C	0.45
18	B88-6201	Metal drag washer B	5.15	53	B92-2301	Drag lever B	11.20
19	B00-4301	Metal drag washer screw B	0.35	54	B69-5502	Drag lever washer D	0.45
20	B83-2701	Spool plate	1.45	55	B88-3501	Lever support plate	2.65
21	B83-2901	Ball bearing spring	0.45	56	B88-3601	Cover plate	5.45
22	B88-6401	Ball bearing washer	0.35	57	353-1201	Cover plate screw	0.50
23	B88-3001	Ball bearing	9.05	58	B70-3401	Drive gear plate screw	0.35
24	B88-5801	Spool	63.00	59	B88-4001	Drive gear plate	1.80
25	B88-6101	Click plate A	0.65	60	B88-3901	Drive shaft	11.70
26	B88-6001	Click plate B	6.70	61	B88-3801	Drive gear	23.80
27	B70-3401	Click plate screw	0.35	62	B88-4101	Drive shaft washer	0.45
28	B88-3001	Ball bearing	9.05	63	B88-4201	Handle	24.15
29	B88-5701	Disc spring washer	0.35	64	B88-4501	Handle screw	2.95
30	B88-5601	Pinion gear	18.95	65	B88-4701	Handle plate	1.90
31	B88-3001	Ball bearing	9.05	66	353-1201	Handle plate screw	0.50
32	B88-2901	Eccentric cam A	18.00	67	E05-9301	Click lever	6.00
33	B83-1301	Eccentric cam pin A	1.80	68	E05-8801	Click lever retainer	1.00
34	B69-8701	Eccentric cam pin B	2.00	69	160-8401	Click lever retainer washer	0.35
35	B88-2801	Sleeve	2.45	70	351-6407	Click lever retainer screw	0.35