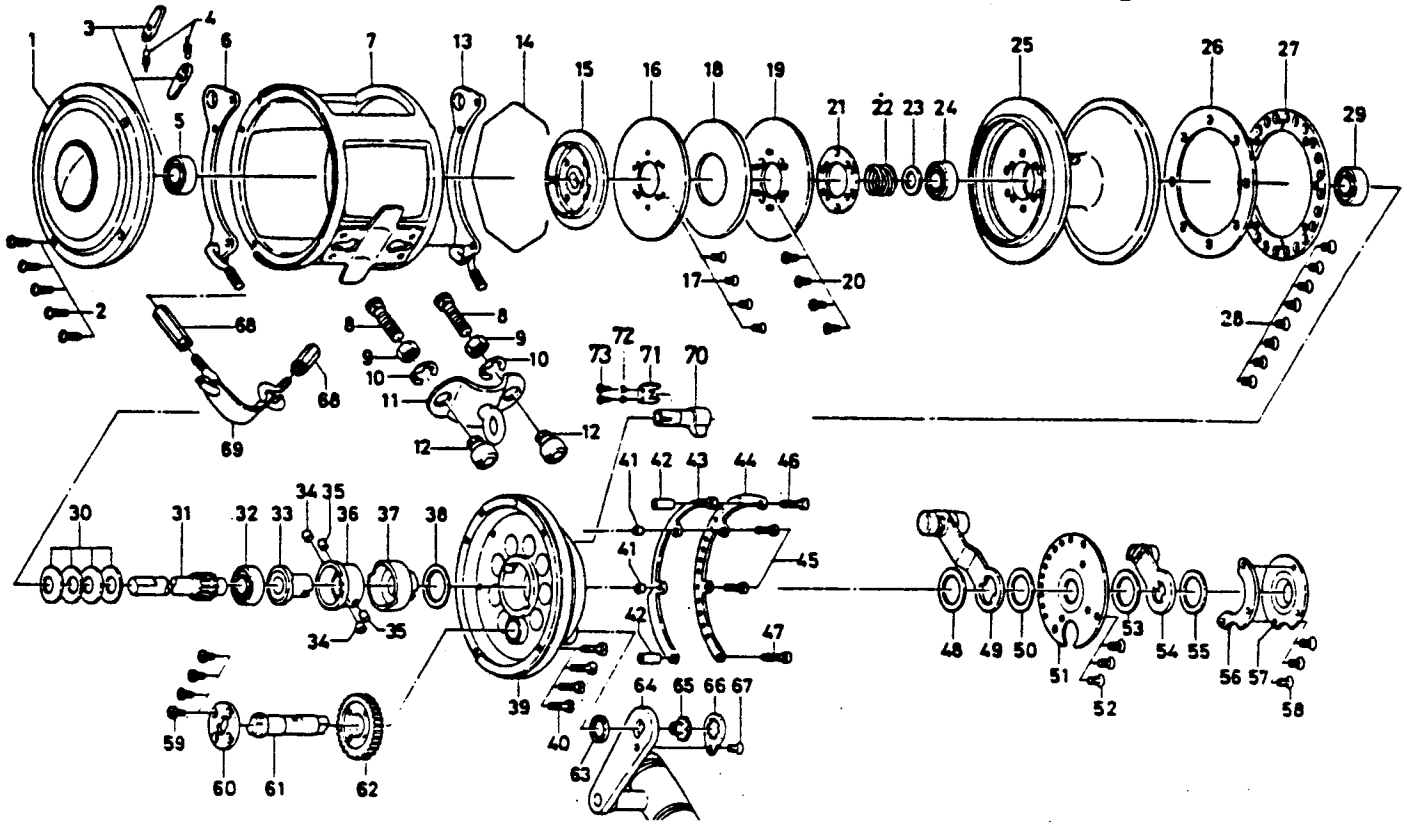


# CONVENTIONAL LEVER-DRAG OCEAN REEL SEALINE TOURNAMENT SLT 80/SLT 80W



Key No.	Parts No.	Parts Name	Price Each	Key No.	Parts No.	Parts Name	Price Each
1	B70-3901	Left side plate	71.60	41	B69-9601	Quadrant ring collar (short)	0.65
2	B83-1501	Left side plate screw	0.35	42	B70-2501	Quadrant ring collar (long)	0.85
3	B70-4401	Anti-reverse pawl	0.80	43	B83-1401	Quadrant ring A	0.45
4	144-8701	Anti-reverse pawl spring	0.50	44	B69-9502	Quadrant ring B	2.10
5	B69-8901	Ball bearing	9.05	45	B99-8201	Quadrant ring screw A	0.45
6	B70-1602	Harness lug A	11.35	46	B83-2401	Quadrant ring screw B	0.65
7	B83-2201	Frame	142.00	47	B83-2501	Quadrant ring screw C	0.65
8	B70-4501	Clamp bolt	1.45	48	B69-5502	Drag lever washer A	0.45
9	B70-4601	Clamp nut	0.90	49	B92-0601	Drag lever A	13.95
10	B83-3201	Clamp retainer	0.35	50	B69-5502	Drag lever washer B	0.45
11	B70-4701	Rod brace A	10.05	51	B69-9101	Pre-set plate	13.60
12	B70-5001	Rod brace nut A	3.75	52	353-1201	Bridge cover screw	0.50
13	B70-1601	Harness lug B	11.35	53	B69-5502	Drag lever washer C	0.45
14	B70-3801	Spool retainer	0.55	54	B92-1301	Drag lever B	12.05
15	B70-3701	Ratchet plate	17.25	55	B69-5502	Drag lever washer D	0.45
16	B70-3501	Metal drag washer A	6.25	56	B69-9301	Lever support plate	3.20
17	B70-3401	Metal drag washer screw A	0.40	57	B69-9401	Cover plate	8.50
18	B83-3001	Drag washer	6.30	58	353-1201	Cover plate screw	0.50
19	B83-2801	Metal drag washer B	8.35	59	B00-4301	Drive gear plate screw	0.35
20	B00-4301	Metal drag washer screw B	0.45	60	B70-0801	Drive gear plate	2.25
21	B83-2701	Spool plate	1.45	61	B70-0701	Drive shaft	12.55
22	B83-2901	Ball bearing spring	0.45	62	B70-0601	Drive gear	25.80
23	376-3602	Ball bearing washer	0.45	63	B70-0901	Drive shaft washer	0.35
24	B69-8901	Ball bearing	9.05	64	B70-1001	Handle	23.25
25	B70-2901	Spool	132.00	65	B87-9901	Handle screw	3.45
26	B70-3301	Click plate A	7.40	66	B70-1501	Handle plate	2.05
27	B70-3201	Click plate B	11.30	67	353-1201	Handle plate screw	0.50
28	B70-3401	Click plate screw	0.40	68	342-5201	Rod brace nut B	1.15
29	B69-8901	Ball bearing	9.05	69	783-3202	Rod brace B	2.30
30	B83-2601	Disc spring washer	0.45	70	E05-9001	Click lever	6.50
31	B70-2601	Pinion gear	22.20	71	E05-8801	Click lever retainer	1.00
32	B69-8901	Ball bearing	9.05	72	160-8401	Click lever retainer washer	0.35
33	B69-8801	Eccentric cam A	19.25	73	351-6407	Click lever retainer screw	0.35
34	B83-1301	Eccentric cam pin A	1.80				
35	B69-8701	Eccentric cam pin B	2.00				
36	B69-8601	Sleeve	5.05				
37	B69-8501	Eccentric cam B	25.35				
38	B69-5502	Eccentric cam washer	0.45				
39	B69-7701	Right side plate	116.00				
40	B83-1501	Right side plate screw	0.35				

SLT 80W Special Parts			
Key No.	Parts No.	Parts Name	Price Each
1	B89-7501	Left side plate	71.60
7	B89-7001	Frame	152.40
25	B89-7301	Spool	144.25
31	B89-7601	Pinion gear	29.10