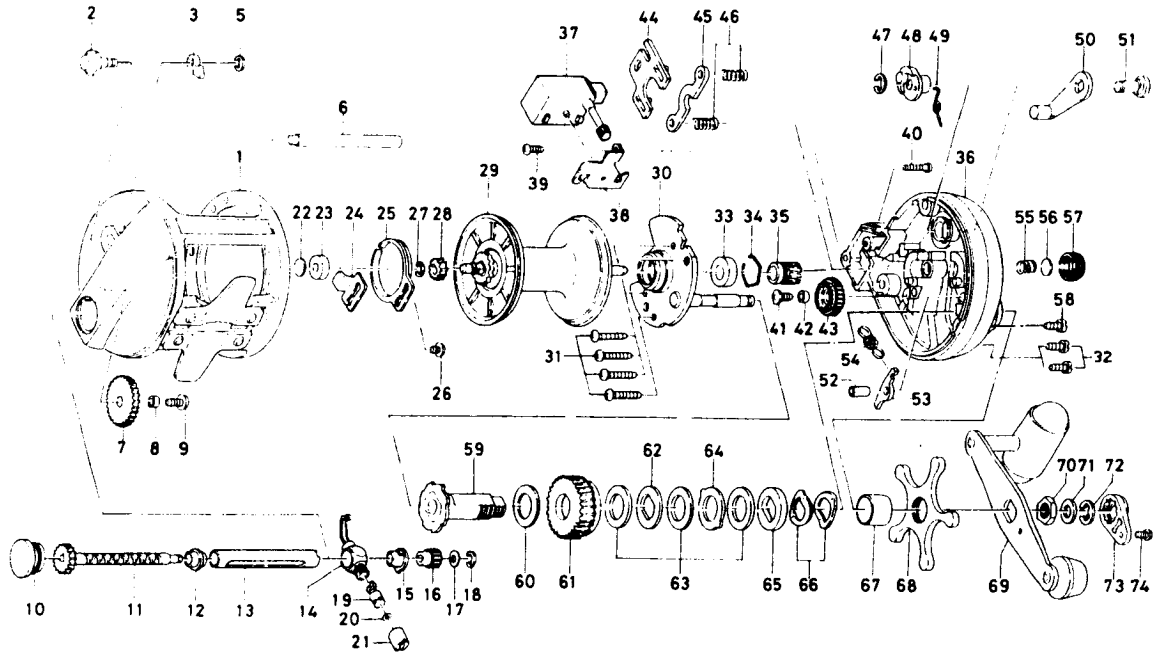


FRESH WATER DOWNRIGGER REEL 47LC



Key No.	Parts No.	Parts Name
1	E24-2201	Frame assembly
2	B21-6601	Click button
3	030-6611	Click pawl
5	320-1402	Click pawl retainer
6	B21-6301	Frame post
7	B21-5801	Idle gear
8	B65-6201	Idle gear collar
9	E10-7401	Idle gear screw
10	B40-6703	Side cap
11	E24-2601	Worm shaft
12	B10-0301	Worm bearing A
13	B21-6201	Level wind guard
14	B21-6401	Line guide
15	B09-9701	Worm bearing B
16	E24-2801	Counter gear A
17	373-1302	Worm shaft holder washer
18	320-5901	Worm shaft retainer
19	E24-0901	Line guide pawl
20	375-0800	Line guide washer
21	341-5901	Pawl cap
22	375-7403	Bushing washer
23	637-5601	Bushing A
24	B21-5501	Click spring retainer
25	160-7922	Click spring
26	B83-4402	Click spring screw
27	320-8002	Spool gear retaining ring
28	403-2901	Spool gear
29	E24-2501	Spool assembly
30	E24-2001	Set plate
31	E04-3301	Set plate screw A
32	E30-5402	Set plate screw B
33	B73-8001	Bushing B
34	170-7701	Bearing retainer
35	E15-1601	Pinion gear
36	E24-1301	Right side plate

Key No.	Parts No.	Parts Name
37	E24-1501	Counter assembly
38	E24-1801	Counter plate
39	E15-7502	Counter screw A
40	E11-9601	Counter screw B
41	E10-7401	Counter gear screw
42	B65-6201	Counter gear collar
43	E24-1901	Counter gear B
44	O41-5701	Yoke plate
45	O41-5801	Yoke
46	144-7101	Yoke spring
47	320-7601	Clutch lever retainer
48	E04-2901	Clutch cam
49	145-2501	Clutch spring
50	782-5403	Clutch lever
51	E04-3001	Clutch lever pin
52	E08-1801	Collar
53	B12-0702	Anti-reverse pawl
54	145-2801	Anti-reverse pawl spring
55	E23-5301	Spool tension spring
56	375-7405	Spacer
57	B93-9701	Cast control cap
58	E04-3702	Set plate screw C
59	B12-1101	Gear shaft
60	375-2901	Drive gear washer
61	E15-1801	Drive gear
62	376-3401	Key washer A
63	375-9903	Drag washer
64	376-3501	Eared washer
65	375-6204	Key washer B
66	151-8701	Drag spring washer
67	B36-5101	Spacing sleeve
68	B21-5001	Star drag
69	E30-6501	Handle assembly
70	B26-7403	Handle nut
71	371-0605	Handle nut washer
72	320-7601	Handle nut retainer
73	B15-2302	Handle nut plate
74	351-1801	Handle nut plate screw