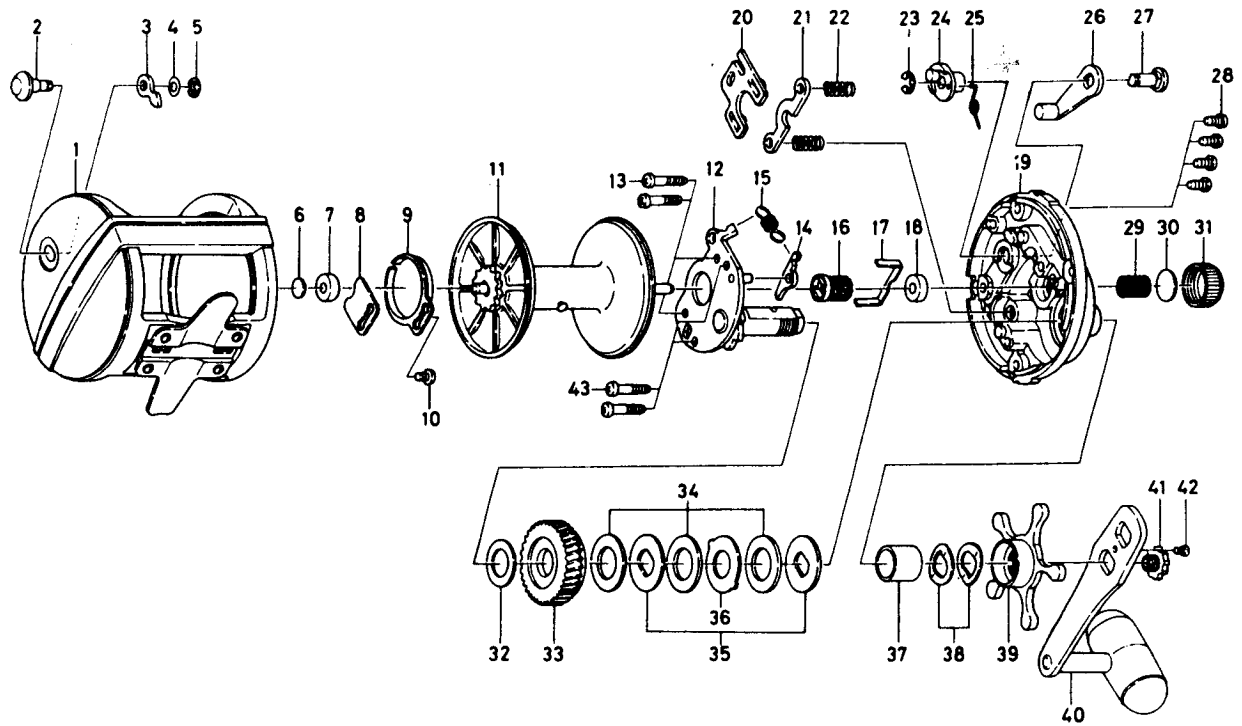


MULTIPLYING REEL — Sealine SL250H



Key No.	Part No.	Part Name	Price	Key No.	Part No.	Part Name	Price
1	L12-0901	Frame assembly	19.90	23	320-7601	Clutch lever retainer	.70
2	541-6502	Click button	3.50	24	E04-2901	Clutch cam	2.20
3	030-6221	Click pawl	2.30	25	E04-9401	Clutch spring	.55
4	373-1600	Click pawl washer	.60	26	782-5404	Clutch lever	2.35
5	320-1402	Click pawl retainer	.55	27	E04-3002	Clutch lever pin	2.65
6	375-7403	Spacer A	.70	28	E04-3702	Right side plate screw	.60
7	637-5601	Bush	2.75	29	145-3101	Spool tension spring	.60
8	E04-3601	Click spring retainer	1.20	30	375-7501	Spacer B	.60
9	160-7922	Click spring	2.75	31	382-0302	Cast drag control cap	4.15
10	B83-4402	Click spring screw	.50	32	375-2901	Drive shaft washer	.45
11	E04-9802	Spool assembly	24.50	33	E05-3101	Drive gear	16.00
12	E04-3101	Set plate	15.00	34	375-9905	Drag washer	2.80
13	E04-3301	Set plate screw A	.65	35	376-3404	Key washer	2.70
14	B12-0701	Anti-reverse pawl	1.40	36	376-3501	Eared washer	1.80
15	145-2801	Anti-reverse pawl spring	.60	37	501-9312	Spacing sleeve	2.00
16	E04-9501	Pinion gear	13.00	38	151-8701	Friction washer	1.60
17	E04-2801	Ball bearing retainer	1.15	39	782-5307	Star drag	7.00
18	633-8811	Ball bearing	8.60	40	L12-0701	Handle assembly	15.50
19	E04-2602	Right side plate	8.30	41	353-3303	Handle screw A	3.50
20	041-5701	Yoke plate	1.65	42	353-2811	Handle screw B	.70
21	041-5801	Yoke	1.35	43	B83-5002	Set plate screw B	.60
22	144-7101	Yoke spring	.55				

NEW PARTS LIST. NOTE: New model has blue line. Old model is red line.