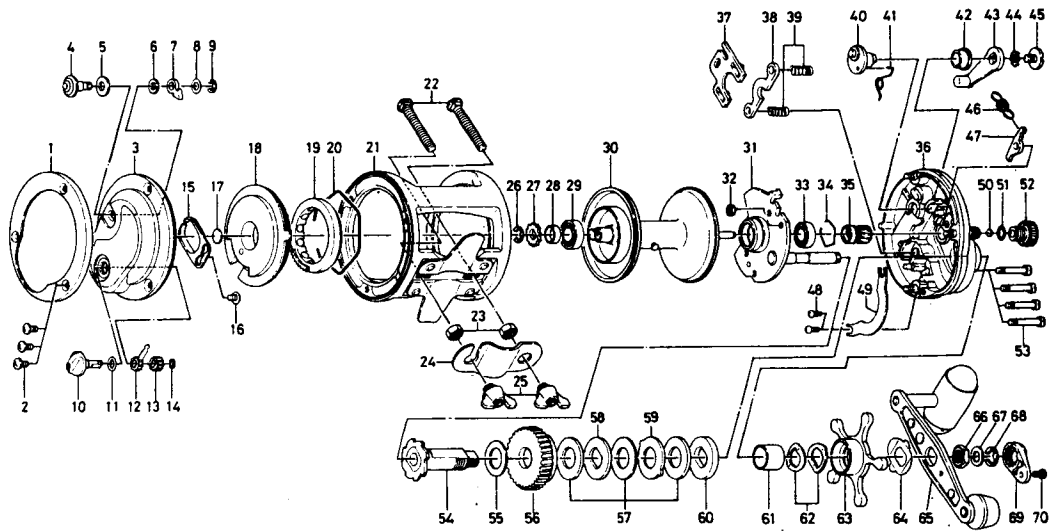


MULTIPLYING REEL SMF 170H



| Key No. | Parts No. | Parts Name | Key No. | Parts No. | PartsName |
|---------|-----------|-------------------------------|---------|-----------|---------------------------|
| 1 | B62-9001 | L. S. ring | 36 | B62-6001 | R. S. plate |
| 2 | 353-6201 | L. S. plate screw | 37 | 041-5701 | Eccentric jack |
| 3 | B62-8703 | L. S. plate | 38 | 041-5801 | Pinion yoke |
| 4 | B62-9201 | Click button | 39 | 145-2411 | Clutch spring |
| 5 | B40-3103 | Click button washer | 40 | B12-0301 | Eccentric cam |
| 6 | 375-4302 | Click claw washer A | 41 | B12-0601 | Eccentric cam spring |
| 7 | B20-9301 | Click claw | 42 | B35-2501 | Clutch lever screw holder |
| 8 | 373-1300 | Click claw washer B | 43 | B12-0401 | Clutch lever |
| 9 | 320-5901 | Click claw retainer | 44 | 160-8001 | Clutch lever lock washer |
| 10 | B62-9301 | Brake adjusting knob | 45 | 363-5301 | Clutch lever screw |
| 11 | 637-0601 | "O" ring | 46 | 145-2801 | Anti-reverse claw spring |
| 12 | B54-1701 | Brake adjusting gear A | 47 | B62-6801 | Anti-reverse claw |
| 13 | B62-9401 | Brake adjusting gear B | 48 | B55-7601 | Body cover screw |
| 14 | 320-4202 | Brake adjusting gear retainer | 49 | B62-7201 | Body cover |
| 15 | B62-9101 | Click spring | 50 | B75-6101 | Spool adjusting cap metal |
| 16 | 352-2201 | Click spring screw | 51 | B02-1901 | "O" ring |
| 17 | 375-7405 | Bearing metal washer | 52 | B62-6301 | Right spool cap |
| 18 | B62-7701 | Magnet holder A | 53 | B34-3301 | R. S. plate screw |
| 19 | B62-8201 | Magnet holder B | 54 | B12-1101 | Gear shaft |
| 20 | B62-8501 | Magnet holder-retainer | 55 | 375-2901 | Gear shaft washer |
| 21 | B63-6503 | Frame | 56 | B62-7101 | Drive gear |
| 22 | 353-9801 | Rod clamp screw | 57 | 375-9903 | Drag washer A |
| 23 | 341-9701 | Rod clamp nut | 58 | 376-3401 | Drag washer B |
| 24 | 041-5601 | Rod clamp | 59 | 376-3501 | Drag washer C |
| 25 | 342-2111 | Rod clamp wing nut | 60 | 376-3403 | Drag washer D |
| 26 | 320-7601 | Click gear retainer | 61 | B26-8401 | Spacing sleeve |
| 27 | B20-9701 | Click gear | 62 | 151-8701 | Tension spring |
| 28 | B63-0401 | Collar | 63 | 782-5304 | Star drag |
| 29 | B62-8601 | Ball bearing | 64 | B17-2801 | Handle washer |
| 30 | B63-1801 | Spool | 65 | B62-7301 | Handle |
| 31 | B62-6901 | Set plate | 66 | B26-7402 | Handle nut |
| 32 | B03-7201 | Set plate screw ret. nut | 67 | 371-0605 | Handle nut washer |
| 33 | 636-6401 | Ball bearing | 68 | 320-7601 | Handle nut retainer |
| 34 | 170-7701 | Ball bearing retainer | 69 | B15-2301 | Handle nut plate |
| 35 | B62-6601 | Pinion gear | 70 | 351-1801 | Handle nut plate screw |