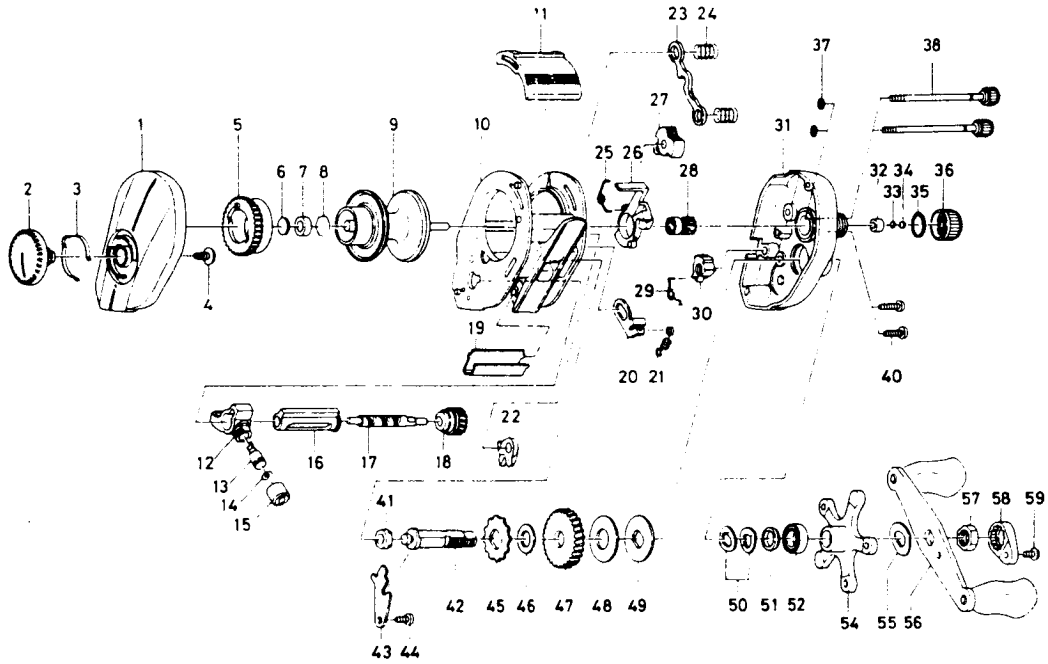


# BAITCASTING REEL HT1000F/1500F



Key No.	Parts No.	Parts Name
1	E23-8910	Left side plate
2	E23-9701	Brake adjusting knob
3	B74-7702	Brake click spring
4	E03-7801	Brake adjusting knob screw
5	E23-9501	Magnet holder
6	375-7400	Spacer A
7	B55-0301	Bushing A
8	B42-1601	Bearing retainer
9	E23-9901	Spool assembly
10	E35-1901	Frame assembly
11	E23-7101	Clutch lever
12	E16-6301	Line guide
13	121-4212	Line guide pawl
14	375-4100	Line guide washer
15	342-4801	Pawl cap
16	E23-8201	Level wind guard
17	E24-7101	Worm shaft
18	B99-2001	Worm shaft gear
19	E24-9402	Line guard
20	E23-7301	Clutch trip plate
21	E30-6001	Clutch trip plate spring
22	E23-8001	Anti-reverse pawl
23	E23-7701	Yoke
24	E16-7101	Yoke spring
25	E24-9001	Clutch cam spring
26	E23-7401	Clutch cam
27	E24-9101	Flipping lever
28	E23-7801	Pinion gear
31	E23-8310	Right side plate
32	E34-2401	Bushing B
33	E16-9201	Spool adjusting cap metal
34	E17-0501	Spacer B
35	171-5201	"O" ring A
36	E23-8401	Cast control cap
37	B85-3101	"O" ring B

Key No.	Parts No.	Parts Name
38	B91-1706	Right side plate screw
40	E13-0501	Set plate screw
41	B55-0301	Bushing C
42	E23-7501	Drive shaft
43	E23-7601	Drive shaft retainer
44	B83-4402	Drive shaft retainer screw
45	E32-7701	Anti-reverse ratchet
46	375-7103	Drive shaft washer
47	B36-0102	Drive gear
48	B36-0202	Drag washer
49	B36-0301	Key washer
50	150-8901	Drag spring washer
51	E20-8501	Spacing sleeve
52	E15-4001	Ball bearing
54	E23-8702	Star drag
55	150-9001	Friction washer
56	E30-5202	Handle assembly
57	B43-3601	Handle nut
58	B43-3902	Handle nut plate
59	351-1801	Handle nut plate screw

### HT1500F Special Parts

1	E23-8915	Left side plate
9	B28-5303	Spool assembly
10	E35-2301	Frame assembly
11	E28-3701	Clutch lever
16	E31-2001	Level wind guard
17	E28-4601	Worm shaft
19	E31-0302	Line guard
29	E31-1801	Anti-reverse lever spring
30	E30-9501	Anti-reverse lever
31	E23-8315	Right side plate
38	B91-1708	Right side plate screw