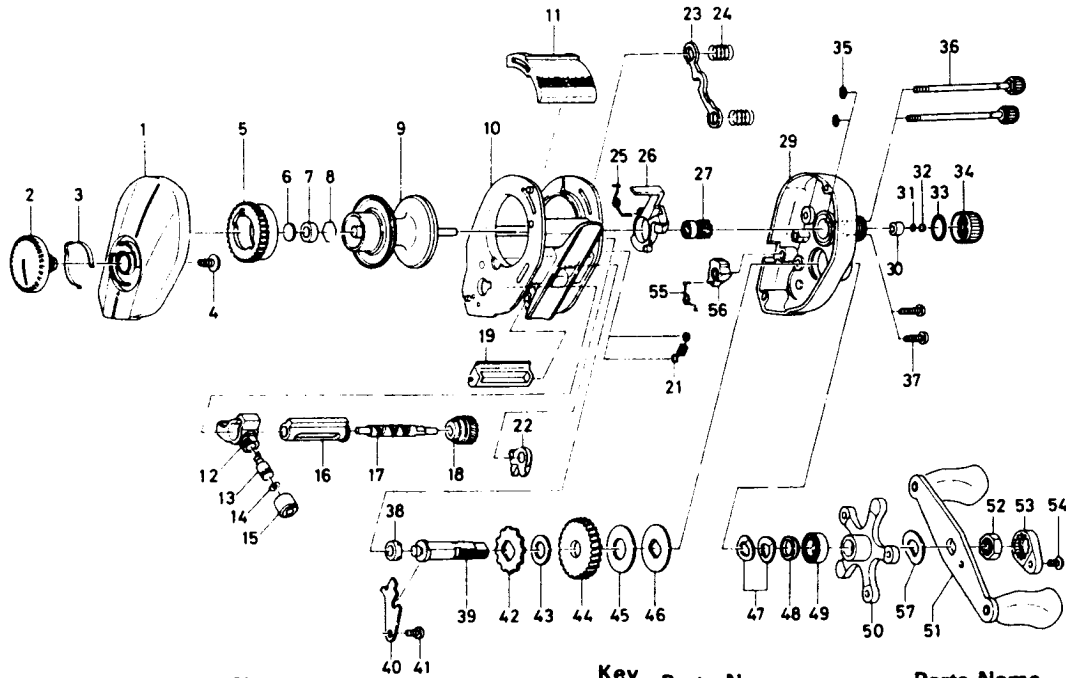


BAITCASTING REEL MA10-2B/15-2B



Key No.	Parts No.	Parts Name	Key No.	Parts No.	Parts Name
1	E23-8902	Left side plate	34	E23-8401	Cast control cap
2	E23-9701	Brake adjusting knob	35	B85-3101	"O" ring B
3	B74-7702	Brake click spring	36	B91-1706	Right side plate screw
4	B84-2102	Brake adjusting knob screw	37	E13-0501	Set plate screw
5	E23-9501	Magnet holder	38	B55-0301	Bushing B
6	375-7400	Spacer A	39	E23-7501	Drive shaft
7	B55-0301	Bushing A	40	E23-7601	Drive shaft retainer
8	B42-1601	Bearing retainer	41	B83-4402	Drive shaft retainer screw
9	E23-9902	Spool assembly	42	E32-7701	Anti-reverse ratchet
10	E37-0402	Frame assembly	43	375-7103	Drive shaft washer
11	E23-7102	Clutch lever	44	B36-0102	Drive gear
12	E16-6301	Line guide	45	B36-0202	Drag washer
13	121-4212	Line guide pawl	46	B36-0301	Key washer
14	375-4100	Line guide washer	47	150-8901	Drag spring washer
15	342-4801	Pawl cap	48	E20-8501	Spacing sleeve
16	E23-8201	Level wind guard	49	E15-4001	Ball bearing
17	E24-7101	Worm shaft	50	E23-8702	Star drag
18	B99-2001	Worm shaft gear	51	E30-5201	Handle assembly
19	E23-7002	Line guard	52	B43-3601	Handle nut
21	E30-6001	Clutch trip plate spring	53	B43-3902	Handle nut plate
22	E23-8001	Anti-reverse pawl	54	351-1801	Handle nut plate screw
23	E23-7701	Yoke	55	150-9001	Friction washer
24	E16-7101	Yoke spring			
25	E34-6601	Clutch cam spring			
26	E23-7401	Clutch cam			
27	E23-7801	Pinion gear			
29	E23-8316	Right side plate			
30	E34-2401	Bushing C			
31	E16-9201	Spool adjusting cap metal			
32	E17-0501	Spacer B			
33	171-5201	"O" ring A			

MA15-2B Special parts		
Key No.	Parts No.	Parts Name
1	E23-8905	Left side plate
9	E28-5304	Spool assembly
10	E37-0802	Frame assembly
11	E28-3702	Clutch lever
16	E31-2001	Level wind guard
17	E28-4601	Worm shaft
19	E28-3502	Line guard
29	E23-8318	Right side plate
36	B91-1708	Right side plate screw
55	E31-1801	Anti-reverse lever spring
56	E30-9501	Anti-reverse lever