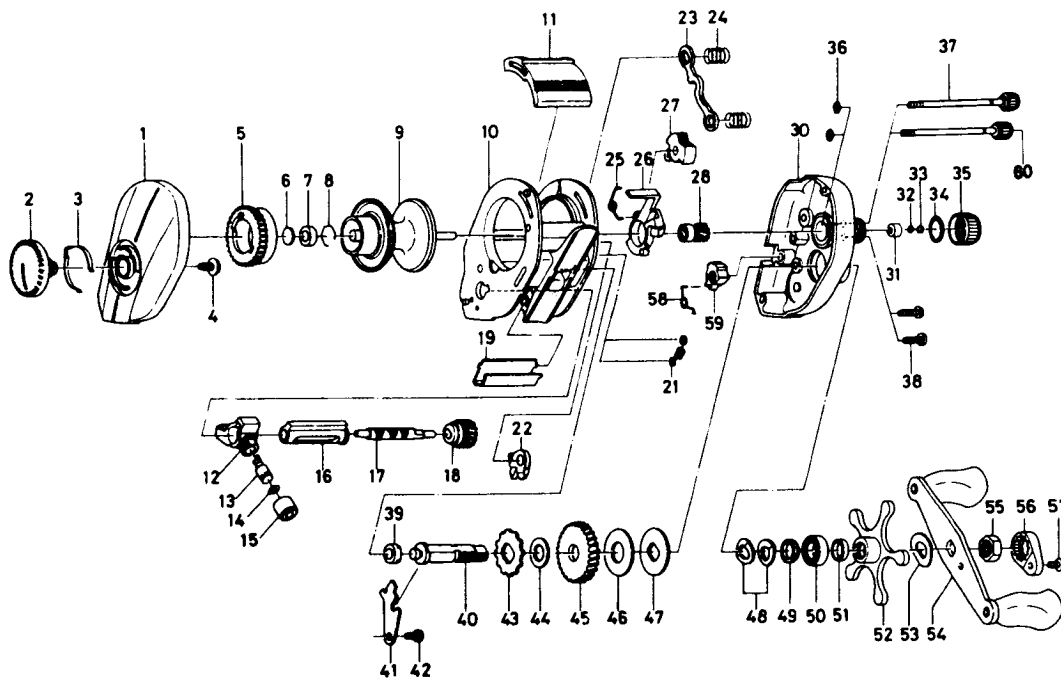


BAITCASTING REEL MA10-3B/15-3B



Key No.	Parts No.	Parts Name	Key No.	Parts No.	Parts Name
1	E23-8903	Left side plate	37	B91-1706	Right side plate screw A
2	E23-9701	Brake adjusting knob	38	E13-0502	Set plate screw
3	B74-7702	Brake click spring	39	B55-0301	Bushing B
4	B84-2102	Brake adjusting knob screw	40	E23-7501	Drive shaft
5	E23-9501	Magnet holder	41	E23-7601	Drive shaft retainer
6	375-7400	Spacer A	42	B83-4402	Drive shaft retainer screw
7	B35-8601	Ball bearing A	43	E32-7701	Anti-reverse ratchet
8	B42-1601	Bearing retainer	44	375-7103	Drive shaft washer
9	F00-9001	Spool assembly	45	B85-2101	Drive gear
10	E37-0402	Frame assembly	46	B36-0202	Drag washer A
11	E23-7102	Clutch lever	47	B36-0301	Key washer
12	E16-6301	Line guide	48	150-8901	Drag spring washer
13	121-4212	Line guide pawl	49	E20-8501	Spacing sleeve A
14	375-4100	Line guide washer	50	E15-4001	Ball bearing B
15	342-4801	Pawl cap	51	B97-4901	Spacing sleeve B
16	E23-8201	Level wind guard	52	B86-4202	Star drag
17	E24-7101	Worm shaft	53	150-9001	Friction washer
18	B99-2001	Worm shaft gear	54	E24-0403	Handle assembly
19	E24-9401	Line guard	55	B43-3601	Handle nut
21	E30-6001	Clutch trip plate spring	56	B43-3903	Handle nut plate
22	E23-8001	Anti-reverse pawl	57	351-1803	Handle nut plate screw
23	E23-7701	Yoke	60	B91-1707	Right side plate screw B
24	E16-7101	Yoke spring			
25	E24-9001	Clutch cam spring			
26	E23-7401	Clutch cam			
27	E24-9101	Flipping selector			
28	E24-9201	Pinion gear			
30	E23-8317	Right side plate			
31	E34-2401	Bushing A			
32	E16-9201	Spool adjusting cap metal			
33	E17-0501	Spacer B			
34	171-5201	"O" ring A			
35	E23-8401	Cast control cap			
36	B85-3101	"O" ring B			

MA15-3B Special parts

1	E23-8906	Left side plate
9	F00-9201	Spool assembly
10	E37-0802	Frame assembly
11	E28-3702	Clutch lever
16	E31-2001	Level wind guard
17	E28-4601	Worm shaft
19	E31-0301	Line guard
30	E23-8319	Right side plate
37	B91-1708	Right side plate screw A
58	E31-1801	Anti-reverse lever spring
59	E30-9501	Anti-reverse lever
60	B91-1709	Right side plate screw B