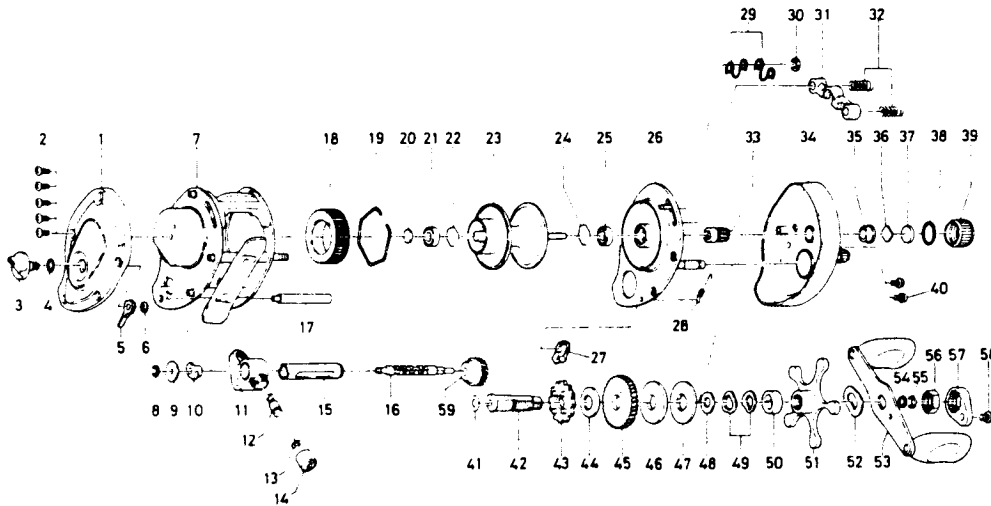


## BAITCASTING REEL PMA10A/15A



Key No.	Parts No.	Parts Name	Key No.	Parts No.	Parts Name
1	B54-1209	Left side cover	34	B55-2407	Right side cover
2	B36-0402	Left side cover screw	35	B64-3101	Bush
3	B66-1001	Brake adjusting knob	36	B17-5401	Spool adjusting cap metal A
4	637-0601	"O" ring	37	B17-5501	Spool adjusting cap metal B
5	B54-1701	Brake adjusting gear	38	171-5201	"O" ring
6	320-4202	Brake adjusting gear retainer	39	B35-7305	Right spool cap
7	B99-2601	Frame	40	B36-0402	Right side cover screw
8	320-5901	Worm shaft retainer	41	373-7611	Gear shaft washer A
9	376-1801	Worm shaft holder washer	42	B35-9602	Gear shaft
10	B71-5601	Worm shaft holder	43	B86-5101	Ratchet
11	B57-8701	Line guide	44	375-7103	Gear shaft washer B
12	B91-2601	Line guide pin	45	B85-2101	Drive gear
13	375-4100	Line guide washer	46	B36-0202	Drag washer A
14	342-4802	Line guide nut	47	B36-0301	Drag washer B
15	B99-1801	Worm shield	48	373-7803	Drag washer C
16	B99-1901	Worm shaft	49	150-8901	Spring washer
17	B36-3401	Frame post	50	634-5801	Spacing sleeve
18	B66-1201	Magnet holder	51	B87-2801	Star drag
19	B54-3201	Magnet holder ret. ring	52	150-9001	Handle washer
20	375-7400	Bearing metal washer	53	B87-2901	Handle
21	B35-8601	Ball bearing	54	B41-1701	Handle nut washer
22	B42-1601	Bearing retainer	55	320-8202	Handle nut retainer
23	B87-3002	Spool	56	B43-3601	Handle nut
24	B42-1601	Bearing retainer	57	B43-3903	Handle nut plate
25	B35-8601	Ball bearing	58	351-1803	Handle nut plate screw
26	B99-2301	Set plate	59	B99-2001	Worm shaft gear
27	B68-2801	Anti-reverse claw			
28	B35-8901	Clutch spring			
29	B81-5503	Set plate spring			
30	320-1402	Clutch ret. ring			
31	B35-9001	Pinion yoke			
32	144-7101	Pinion yoke spring			
33	B87-0901	Pinion gear			

PMA15 Special Parts		
7	B99-2801	Frame
15	B99-2101	Worm shield
16	B99-2201	Worm shaft
17	B36-4401	Frame post
23	B89-2602	Spool
34	B55-2408	Right side cover