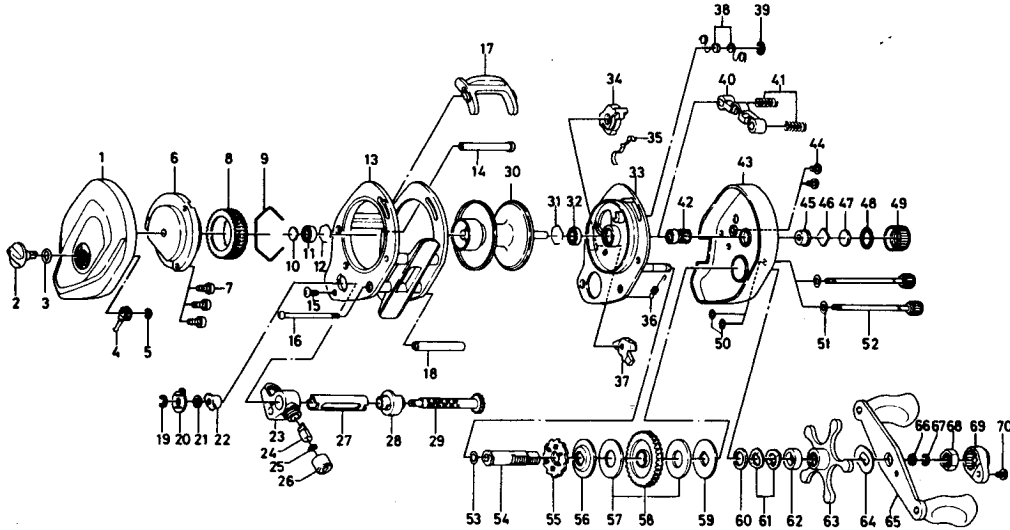


# BAITCASTING REEL PMA33



Key No.	Parts No.	Parts Name	Key No.	Parts No.	Parts Name
1	B85-5202	Left side cover	36	B35-8901	Anti-reverse claw spring
2	B86-5201	Brake adjusting knob	37	B74-0501	Anti-reverse claw
3	637-0601	"O" ring	38	B81-5501	Set plate spring
4	B54-1701	Brake adjusting gear	39	320-1402	Clutch ret. ring
5	320-4202	Brake adjusting gear retainer	40	B35-9001	Pinion yoke
6	B85-5601	Set plate A	41	144-7101	Pinion yoke spring
7	B83-4402	Left side cover screw	42	B85-4401	Pinion gear
8	B66-1202	Magnet holder	43	B90-0403	Right side cover
9	B54-3201	Magnet holder ret. ring	44	B36-0402	Right side cover screw (short)
10	375-7405	Bearing metal washer	45	B64-3101	Bush
11	B35-8601	Ball bearing	46	B17-5401	Spool adjusting cap metal A
12	B42-1601	Bearing retainer	47	B17-5501	Spool adjusting cap metal B
13	B85-6001	Frame	48	171-5201	"O" ring
14	B85-6201	Frame post A	49	B85-3401	Right spool cap
15	B36-0401	Frame post screw (short)	50	B85-3101	Right side cover screw washer A
16	B85-6901	Frame post screw (long)	51	B85-3001	Right side cover screw washer B
17	B85-1501	Clutch lever	52	B91-1701	Right side cover screw (long)
18	B85-6801	Frame post B	53	373-7611	Gear shaft washer A
19	320-5901	Worm shaft retainer	54	B86-5001	Gear shaft
20	B86-3301	Worm shaft plate	55	B86-5101	Ratchet
21	373-1301	Worm shaft holder washer	56	B85-4801	Gear shaft washer B
22	022-2201	Worm shaft holder	57	B36-0203	Drag washer A
23	B57-8701	Line guide	58	B85-4901	Drive gear
24	B71-0101	Line guide pin	59	B36-0301	Drag washer B
25	375-4100	Line guide washer	60	363-7800	Drag washer C
26	342-4802	Line guide nut	61	150-8901	Spring washer
27	B85-6301	Worm shield	62	634-5801	Spacing sleeve
28	B85-6401	Shield bush	63	B87-2801	Star drag
29	B85-6501	Worm shaft	64	150-9001	Handle washer
30	B85-7004	Spool	65	B85-5102	Handle
31	B42-1601	Bearing retainer	66	B41-1701	Handle nut washer
32	B35-8601	Ball bearing	67	320-8202	Handle nut retainer
33	B91-5701	Set plate B	68	B86-2101	Handle nut
34	B85-4601	Anti-reverse lever	69	B86-2301	Handle nut plate
35	B65-0501	Anti-reverse lever spring	70	351-1803	Handle nut plate screw