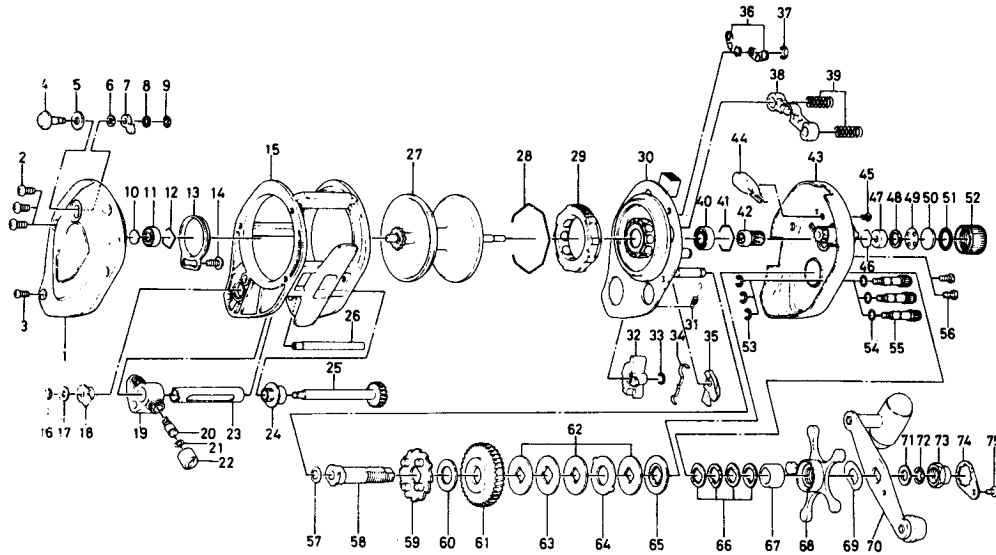


BAITCASTING REEL **PMF57H**



Key No.	Parts No.	Parts Name	Key No.	Parts No.	Parts Name
1	B65-3401	Left side cover	39	B74-0201	Pinion yoke spring
2	351-6408	Left side cover screw A	40	B18-1601	Ball bearing
3	B36-0401	Left side cover screw B	41	B27-0501	Ball bearing retainer
4	B65-4001	Click button	42	B65-1401	Pinion gear
5	B40-3101	Click button washer	43	B64-7803	Right side plate
6	375-4301	Click claw washer A	44	B64-8401	Spring holder
7	B20-9301	Click claw	45	B36-0402	Right side plate screw A
8	373-1300	Click claw washer B	46	B36-8701	Bearing retainer
9	320-5901	Click claw retainer	47	B54-6401	Bearing
10	375-7405	Bearing metal washer	48	502-0901	Bearing ret. ring
11	637-2101	Ball bearing	49	373-7502	Bearing ret. washer A
12	809-5601	Ball bearing retainer	50	374-7221	Rubber washer
13	B20-9101	Click spring	51	B05-5201	"O" ring
14	352-2201	Click spring screw	52	B14-6602	Right spool cap
15	B72-9401	Frame	53	320-8202	Right side plate screw retainer
16	320-5901	Worm shaft retainer	54	B43-2301	Right side plate screw washer
17	373-1302	Worm shaft holder washer	55	B64-8001	Right side plate screw B
18	B09-9701	Worm shaft holder	56	351-1801	Right side plate screw C
19	B57-8701	Line guide	57	B47-9502	Gear shaft washer A
20	B71-0101	Line guide pin	58	B65-1801	Gear shaft
21	375-4100	Line guide washer	59	B65-1901	Ratchet
22	342-4801	Line guide nut	60	B65-2101	Gear shaft washer B
23	B73-0201	Worm shield	61	B65-2201	Drive gear
24	B36-1201	Shield bush	62	B36-0203	Drag washer A
25	B73-0001	Worm shaft	63	B65-2301	Drag washer B
26	B72-9901	Frame post	64	372-3833	Drag washer C
27	B73-0301	Spool	65	B65-2501	Drag washer D
28	B65-1101	Magnet holder retainer	66	B65-2601	Drag spring washer
29	B65-0801	Magnet holder	67	B65-2701	Spacing sleeve
30	B64-8701	Set plate	68	B65-2801	Star drag
31	B35-8901	Anti-reverse claw spring	69	B65-3101	Handle washer
32	B65-0601	Anti-reverse lever	70	B84-8701	Handle
33	320-4202	Anti-reverse claw retainer	71	375-3002	Handle nut washer
34	B65-0501	Anti-reverse lever spring	72	320-8002	Handle nut retainer
35	B74-0501	Anti-reverse claw	73	B66-2501	Handle nut
36	B36-9101	Set plate spring	74	B66-2601	Handle nut plate
37	320-1402	Clutch ret. ring	75	353-8302	Handle nut plate screw
38	B65-1301	Pinion yoke			