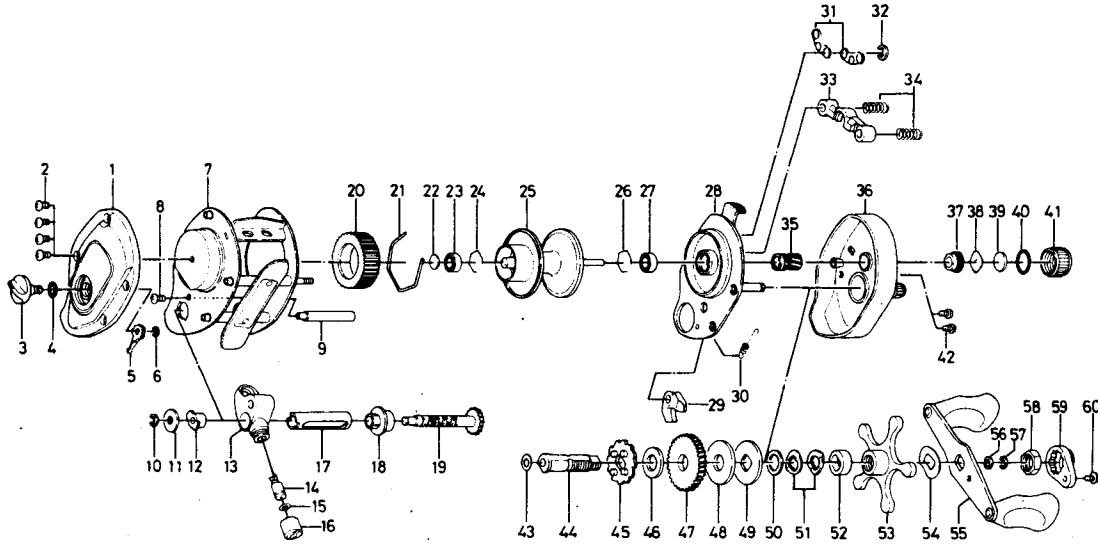


BAITCASTING REEL **PMF7**



Key No.	Parts No.	Parts Name
1	B65-7204	Left side cover
2	B36-0401	Left side cover screw
3	B66-1001	Brake adjusting knob
4	637-0601	"O" ring A
5	B54-1701	Brake adjusting gear
6	320-4202	Brake adjusting gear retainer
7	B66-1801	Frame
8	B36-0401	Left side cover screw
9	B65-8201	Frame post
10	320-5901	Worm shaft retainer
11	376-1801	Worm shaft holder washer
12	022-2201	Worm shaft holder
13	B46-7401	Line guide
14	B71-0101	Line guide pin
15	375-4100	Line guide washer
16	342-4801	Line guide nut
17	B26-9301	Worm shield
18	B36-1201	Shield bush
19	B46-7602	Worm shaft
20	B66-1201	Magnet holder
21	B54-3201	Magnet holder ret. ring
22	375-7400	Bearing metal washer
23	B35-8601	Ball bearing
24	B42-1601	Ball bearing retainer
25	B65-8301	Spool
26	B42-1601	Ball bearing retainer
27	B35-8601	Ball bearing
28	B66-2701	Set plate
29	B46-5401	Anti-reverse claw
30	B35-8901	Anti-reverse claw spring

Key No.	Parts No.	Parts Name
31	B36-9101	Set plate spring
32	320-1402	Clutch ret. ring
33	B35-9001	Pinion yoke
34	144-7101	Pinion yoke spring
35	B64-2901	Pinion gear
36	B65-6504	Right side cover
37	B64-3101	Bush
38	B17-5401	Spool adjusting cap metal A
39	B17-5501	Spool adjusting cap metal B
40	171-5201	"O" ring B
41	B35-7305	Right spool cap
42	B36-0401	Right side cover screw
43	373-7611	Gear shaft washer A
44	B35-9602	Gear shaft
45	B35-9701	Ratchet
46	375-7102	Gear shaft washer B
47	B36-0101	Drive gear
48	B36-0202	Drag washer A
49	B36-0301	Drag washer B
50	373-7803	Drag washer C
51	150-8901	Spring washer
52	634-5801	Spacing sleeve
53	B36-0501	Star drag
54	150-9001	Handle washer
55	B46-5801	Handle
56	B41-1701	Handle nut washer
57	320-8202	Handle nut retainer
58	B43-3601	Handle nut
59	B43-3903	Handle nut plate
60	351-1801	Handle nut plate screw