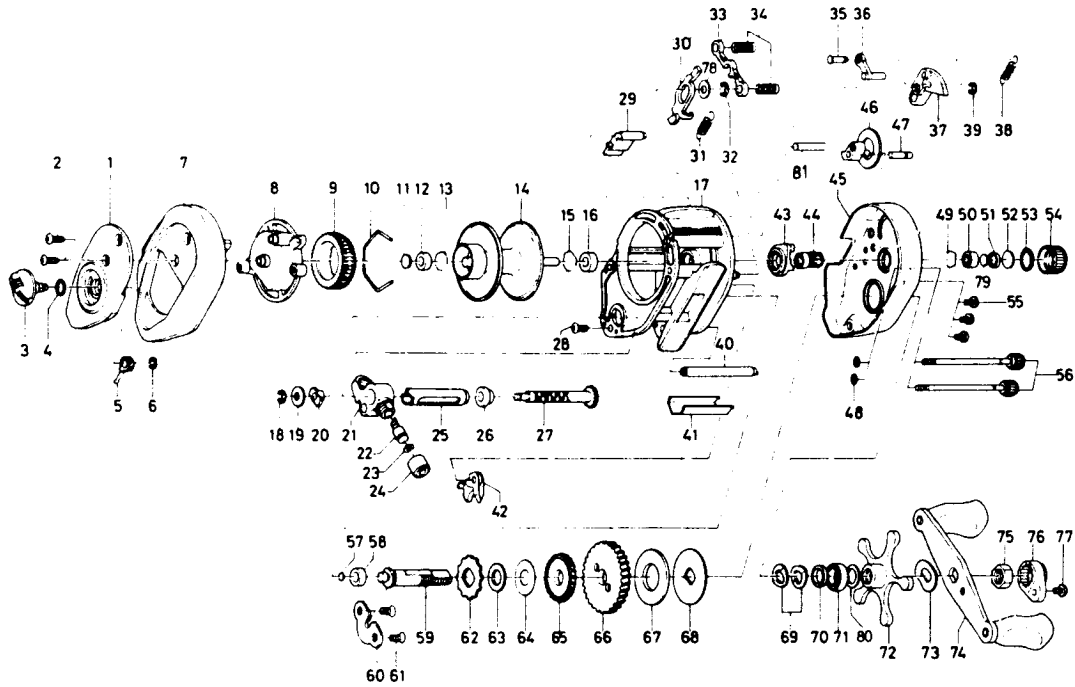


BAITCASTING REEL PR33



Key No.	Parts No.	Parts Name	Key No.	Parts No.	Parts Name
1	E20-0702	Left set plate A	42	E19-8101	Anti-reverse pawl
2	353-4402	Left side plate screw	43	E19-6901	Yoke plate
3	B98-5001	Brake adjusting knob	44	E19-7901	Pinion gear
4	637-0601	"O" ring A	45	E19-4902	Right side plate
5	B54-1701	Brake adjusting gear	46	E19-7302	Flipping/casting selector
6	320-4202	Brake adjusting gear retainer	47	E19-7401	Flipping/casting selector pin
7	E20-0402	Left side plate	48	B85-3101	Right side plate screw washer
8	E20-0501	Left set plate B	49	E21-9701	Bearing retainer C
9	B66-1202	Magnet holder	50	E08-8001	Ball bearing A
10	B54-3201	Magnet holder ret. ring	51	E23-0501	Spacer
11	375-7405	Spacer A	52	B17-5501	Spool tension spring
12	B55-0301	Bushing A	53	171-5201	"O" ring B
13	B42-1601	Bearing retainer A	54	B85-3401	Cast control cap
14	E23-6201	Spool assembly	55	353-4402	Set plate screw
15	B42-1601	Bearing retainer B	56	B91-1701	Right side plate screw
16	E20-9001	Bushing B	57	B12-0201	Drive shaft washer A
17	E19-5502	Frame assembly	58	B55-0301	Bushing C
18	320-5901	Worm shaft retainer	59	E19-8401	Drive shaft
19	376-1801	Worm shaft holder washer	60	E19-9401	Drive shaft retainer
20	B71-5601	Worm bearing A	61	B39-5503	Drive shaft retainer screw
21	E20-8401	Line guide	62	E19-9901	Anti-reverse ratchet
22	121-4212	Line guide pawl	63	375-7101	Drive shaft washer B
23	375-4100	Line guide washer	64	B96-7401	Drag washer A
24	342-4802	Pawl cap	65	E20-0001	Worm drive gear
25	B99-1801	Level wind guard	66	E20-0101	Drive gear
26	E19-9501	Worm bearing B	67	375-9403	Drag washer B
27	E19-9601	Worm shaft	68	B20-0201	Key washer
28	353-4401	Stabilizer bar screw	69	150-8901	Drag spring washer
29	E20-3701	Set plate spacer	70	E20-8501	Spacing sleeve
30	E19-7601	Clutch trip plate	71	E15-4001	Ball bearing B
31	E19-7701	Clutch trip plate spring	72	B86-4205	Star drag
32	320-1402	Clutch trip plate retainer	73	150-9001	Friction washer
33	E19-7801	Yoke	74	B85-5102	Handle assembly
34	E23-6401	Yoke spring	75	B86-2101	Handle nut
35	E19-7201	Clutch trip plate arm pin	76	B86-2301	Handle nut plate
36	E19-7101	Clutch trip plate arm	77	-351-1803	Handle nut plate screw
37	E19-7001	Clutch cam	78	-371-6903	Clutch trip plate washer
38	E19-7501	Clutch cam spring	79	-374-9102	Spool adjusting cap metal
39	B33-9801	Clutch cam retainer	80	B68-4402	Drag washer C
40	E19-9801	Stabilizer bar A	81	E19-6801	Stabilizer bar B
41	E20-3502	Line guard			