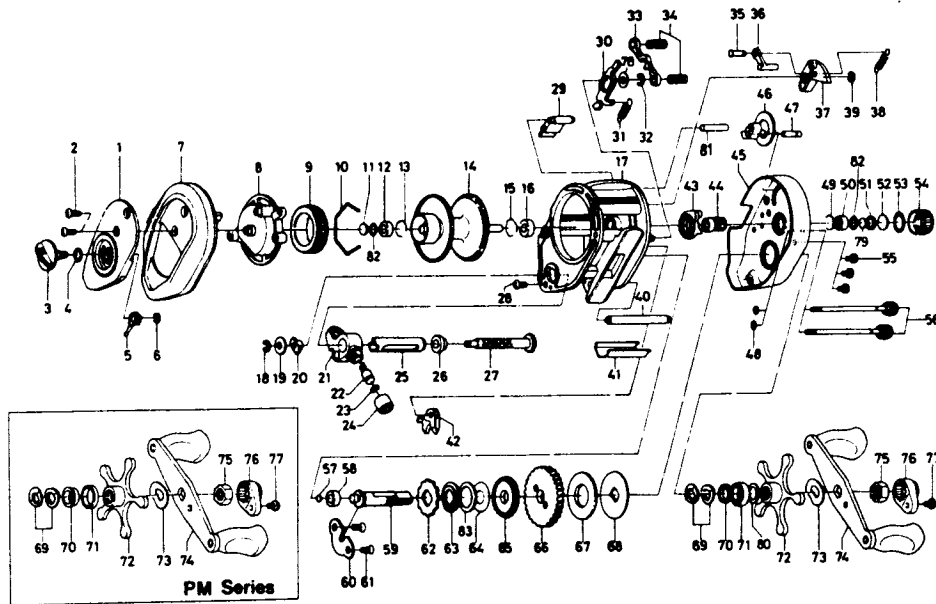


BAITCASTING REEL PR33P/33SH, PM33P/33SH



Key No.	Parts No.	Parts Name	Key No.	Parts No.	Parts Name
1	E20-0711	Left set plate A	43	E19-6901	Yoke plate
2	353-4402	Left side plate screw	44	E19-7901	Pinion gear
3	B98-5001	Brake adjusting knob	45	E32-6102	Right side plate
4	637-0601	"O" ring A	46	E19-7302	Flipping/casting selector
5	B54-1701	Brake adjusting gear	47	E19-7401	Flipping/casting selector pin
6	320-4202	Brake adjusting gear retainer	48	B85-3101	Right side plate screw washer
7	E20-0402	Left side plate	49	E21-9701	Bearing retainer C
8	E20-0501	Left set plate B	50	E08-8001	Ball bearing A
9	B66-1202	Magnet holder	51	E23-0501	Spacer B
10	B54-3201	Magnet holder ret. ring	52	B17-5501	Spacer C
11	375-7405	Spacer A	53	171-5201	"O" ring B
12	B55-0301	Bushing A	54	B85-3401	Cast control cap
13	B42-1601	Bearing retainer A	55	353-4402	Set plate screw
14	E23-6201	Spool assembly	56	B91-1701	Right side plate screw
15	B42-1601	Bearing retainer B	57	B12-0201	Drive shaft washer A
16	E20-9001	Bushing B	58	B55-0301	Bushing C
17	E30-7501	Frame assembly	59	E30-4601	Drive shaft
18	320-5901	Worm shaft retainer	60	E19-9401	Drive shaft retainer
19	376-1801	Worm shaft holder washer	61	B39-5503	Drive shaft retainer screw
20	B71-5601	Worm bearing A	62	E19-9901	Anti-reverse ratchet
21	E20-8401	Line guide	63	E30-6101	Drive shaft washer B
22	121-4212	Line guide pawl	64	B96-7401	Drag washer A
23	373-1300	Line guide washer	65	E30-4801	Worm drive gear
24	342-4802	Pawl cap	66	E20-0101	Drive gear
25	B99-1801	Level wind guard	67	375-9403	Drag washer B
26	E19-9501	Worm bearing B	68	E20-0201	Key washer
27	E19-9601	Worm shaft	69	150-8901	Drag spring washer
28	353-4401	Stabilizer bar screw	70	E20-8501	Spacing sleeve
29	E20-3701	Set plate spacer	71	E15-4001	Ball bearing B
30	E19-7601	Clutch trip plate	72	B86-4205	Star drag
31	E19-7701	Clutch trip plate spring	73	150-9001	Friction washer
32	320-1402	Clutch trip plate retainer	74	B85-5101	Handle assembly
33	E30-4301	Yoke	75	B86-2101	Handle nut
34	E23-6401	Yoke spring	76	B86-2301	Handle nut plate
35	E19-7201	Clutch trip plate arm pin	77	351-1803	Handle nut plate screw
36	E19-7101	Clutch trip plate arm	78	371-6903	Clutch trip plate washer
37	E19-7001	Clutch cam	79	374-9102	Spool adjusting cap metal
38	E19-7501	Clutch cam spring	80	B68-4402	Drag washer C
39	B33-9801	Clutch cam retainer	81	E19-6801	Stabilizer bar B
40	E19-9801	Stabilizer bar A	82	E25-6101	Oiled washer
41	E20-3502	Line guard	83	E30-4701	Drag washer D
42	E19-8101	Anti-reverse pawl			
PR33SH Special Parts			PM33SH Special Parts		
1	E20-0713	Left set plate A	1	E20-0716	Left set plate A
44	E30-4401	Pinion gear	44	E30-4401	Pinion gear
66	E30-4901	Drive gear	50	E28-0201	Bushing D
74	E32-6201	Handle assembly	66	E30-4901	Drive gear
			70	E32-6301	Spacing sleeve
PM33P Special Parts			71	E32-6401	Drag washer E
1	E20-0714	Left set plate A	74	E32-6201	Handle assembly
50	E28-0201	Bushing D			
70	E32-6301	Spacing sleeve			
71	E32-6401	Drag washer E			