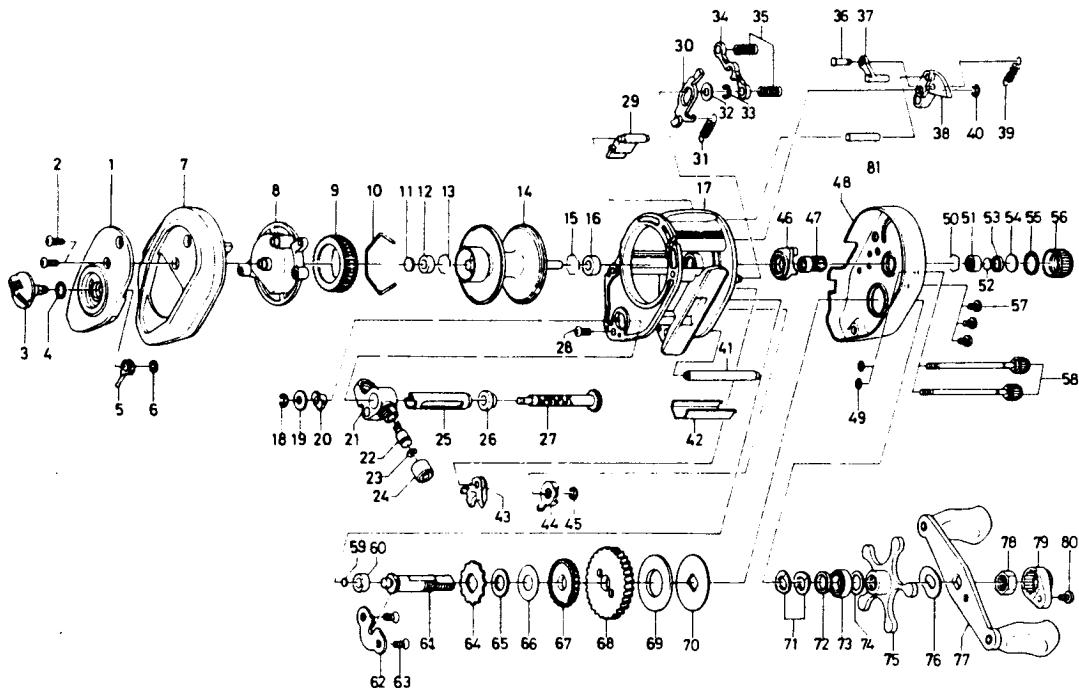


BAITCASTING REEL PR35



| Key No. | Parts No. | Parts Name | Key No. | Parts No. | Parts Name |
|---------|-----------|-------------------------------|---------|-----------|-------------------------------|
| 1 | E20-0703 | Left set plate A | 42 | E22-7501 | Line guard |
| 2 | 353-4402 | Left side plate screw | 43 | E19-8101 | Anti-reverse pawl |
| 3 | B98-5001 | Brake adjusting knob | 44 | E22-7201 | Anti-reverse lever |
| 4 | 637-0601 | "O" ring A | 45 | B33-9801 | Anti-reverse lever retainer |
| 5 | B54-1701 | Brake adjusting gear | 46 | E19-6901 | Yoke plate |
| 6 | 320-4202 | Brake adjusting gear retainer | 47 | E19-7901 | Pinion gear |
| 7 | E20-0402 | Left side plate | 48 | E19-4903 | Right side plate |
| 8 | E20-0501 | Left set plate B | 49 | B85-3101 | Right side plate screw washer |
| 9 | B66-1202 | Magnet holder | 50 | E21-9701 | Bearing retainer C |
| 10 | B54-3201 | Magnet holder set. ring | 51 | E08-8001 | Ball bearing A |
| 11 | 375-7405 | Spacer A | 52 | 374-9102 | Spool adjusting cap metal |
| 12 | B55-0301 | Bushing A | 53 | E23-0501 | Spacer |
| 13 | B42-1601 | Bearing retainer A | 54 | B17-5501 | Spool tension spring |
| 14 | E22-7701 | Spool assembly | 55 | 171-5201 | "O" ring B |
| 15 | B42-1601 | Bearing retainer B | 56 | B85-3401 | Cast control cap |
| 16 | E20-9001 | Bushing B | 57 | 353-4402 | Set plate screw |
| 17 | E22-6601 | Frame assembly | 58 | B91-1702 | Right side plate screw |
| 18 | 320-5901 | Worm shaft retainer | 59 | B12-0201 | Drive shaft washer A |
| 19 | 376-1801 | Worm shaft holder washer | 60 | B55-0301 | Bushing C |
| 20 | B71-5601 | Worm bearing A | 61 | E19-8401 | Drive shaft |
| 21 | E20-8401 | Line guide | 62 | E19-9401 | Drive shaft retainer |
| 22 | 121-4212 | Line guide pawl | 63 | B39-5503 | Drive shaft retainer screw |
| 23 | 375-4100 | Line guide washer | 64 | E19-9901 | Anti-reverse ratchet |
| 24 | 342-4802 | Pawl cap | 65 | 375-7101 | Drive shaft washer B |
| 25 | B99-2101 | Level wind guard | 66 | B96-7401 | Drag washer A |
| 26 | E19-9501 | Worm bearing B | 67 | E20-0001 | Worm drive gear |
| 27 | E22-7301 | Worm shaft | 68 | E20-0101 | Drive gear |
| 28 | 353-4401 | Stabilizer bar screw | 69 | 375-9403 | Drag washer B |
| 29 | E20-3701 | Set plate spacer | 70 | B20-0201 | Key washer |
| 30 | E19-7601 | Clutch trip plate | 71 | 150-8901 | Drag spring washer |
| 31 | E19-7701 | Clutch trip plate spring | 72 | E20-8501 | Spacing sleeve |
| 32 | 371-6903 | Clutch trip plate washer | 73 | E15-4001 | Ball bearing B |
| 33 | 320-1402 | Clutch trip plate retainer | 74 | B68-4402 | Drag washer C |
| 34 | E19-7801 | Yoke | 75 | B86-4205 | Star drag |
| 35 | E23-6401 | Yoke spring | 76 | 150-9001 | Friction washer |
| 36 | E19-7201 | Clutch trip plate arm pin | 77 | B85-5102 | Handle assembly |
| 37 | E19-7101 | Clutch trip plate arm | 78 | B86-2101 | Handle nut |
| 38 | E19-7001 | Clutch cam | 79 | B86-2301 | Handle nut plate |
| 39 | E19-7501 | Clutch cam spring | 80 | 351-1803 | Handle nut plate screw |
| 40 | B33-9801 | Clutch cam retainer | 81 | E19-6801 | Stabilizer bar B |
| 41 | E22-7601 | Stabilizer bar A | | | |