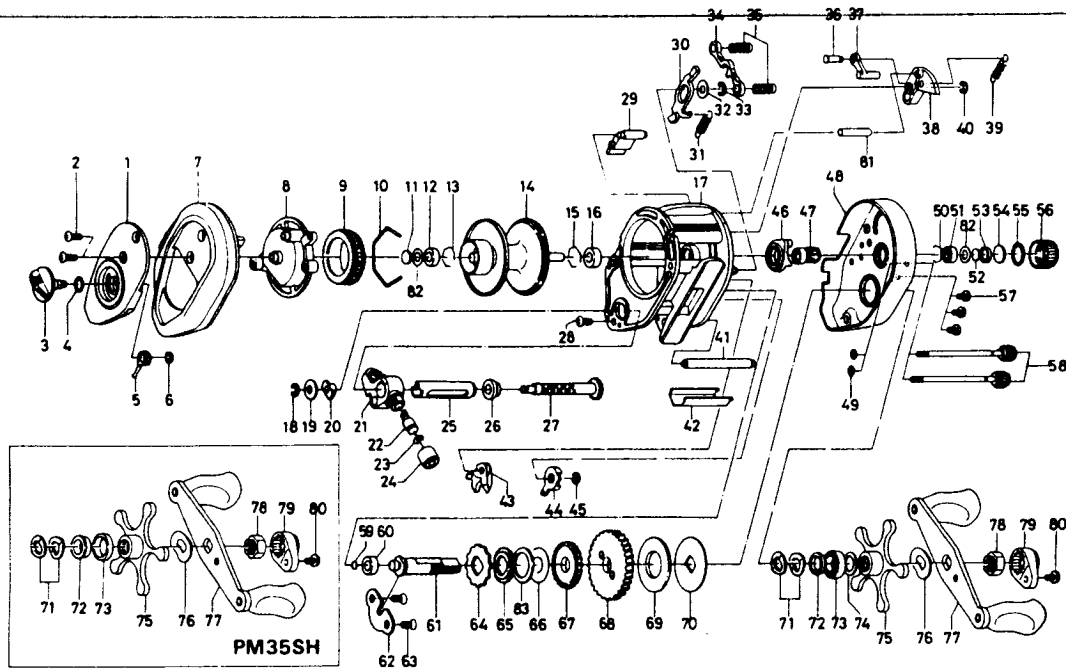


BAITCASTING REEL PR35P/PR35SH/PM35SH



Key No.	Parts No.	Parts Name	Key No.	Parts No.	Parts Name
1	E20-0722	Left set plate A	49	B85-3101	Right side plate screw washer
2	353-4402	Left side plate screw	50	E21-9701	Bearing retainer C
3	B98-5001	Brake adjusting knob	51	E08-8001	Ball bearing A
4	637-0601	"O" ring A	52	374-9102	Spool adjusting cap metal
5	B54-1701	Brake adjusting gear	53	E23-0501	Spacer B
6	320-4202	Brake adjusting gear retainer	54	B17-5501	Spacer C
7	E20-0402	Left side plate	55	171-5201	"O" ring B
8	E20-0501	Left set plate B	56	B85-3401	Cast control cap
9	B66-1202	Magnet holder	57	353-4402	Set plate screw
10	B54-3201	Magnet holder ret. ring	58	B91-1702	Right side plate screw
11	375-7405	Spacer A	59	B12-0201	Drive shaft washer A
12	B55-0301	Bushing A	60	B55-0301	Bushing C
13	B42-1601	Bearing retainer A	61	E30-4601	Drive shaft
14	E22-7701	Spool assembly	62	E19-9401	Drive shaft retainer
15	B42-1601	Bearing retainer B	63	B39-5503	Drive shaft retainer screw
16	E20-9001	Bushing B	64	E19-9901	Anti-reverse ratchet
17	E34-2501	Frame assembly	65	E30-4701	Drive shaft washer B
18	320-5901	Worm shaft retainer	66	B96-7401	Drag washer A
19	376-1801	Worm shaft holder washer	67	E30-4801	Worm drive gear
20	B71-5601	Worm bearing A	68	E20-0101	Drive gear
21	E20-8401	Line guide	69	375-9403	Drag washer B
22	121-4212	Line guide pawl	70	E20-0201	Key washer
23	373-1300	Line guide washer	71	150-8901	Drag spring washer
24	342-4802	Pawl cap	72	E20-8501	Spacing sleeve
25	B99-2101	Level wind guard	73	E15-4001	Ball bearing B
26	E19-9501	Worm bearing B	74	B68-4402	Drag washer C
27	E22-7301	Worm shaft	75	B86-4205	Star drag
28	353-4401	Stabilizer bar screw	76	150-9001	Friction washer
29	E20-3701	Set plate spacer	77	B85-5101	Handle assembly
30	E19-7601	Clutch trip plate	78	B86-2101	Handle nut
31	E19-7701	Clutch trip plate spring	79	B86-2301	Handle nut plate
32	371-6903	Clutch trip plate washer	80	351-1803	Handle nut plate screw
33	320-1402	Clutch trip plate retainer	81	E19-6801	Stabilizer bar B
34	E30-4301	Yoke	82	E25-6101	Oiled washer
35	E23-6401	Yoke spring	83	E30-6101	Drag washer D
36	E19-7201	Clutch trip plate arm pin	PR35SH Special Parts		
37	E19-7101	Clutch trip plate arm	1	E20-0706	Left set plate A
38	E19-7001	Clutch cam	47	E30-4401	Pinion gear
39	E19-7501	Clutch cam spring	68	E30-4901	Drive gear
40	B33-9801	Clutch cam retainer	77	E32-6201	Handle assembly
41	E22-7601	Stabilizer bar A	PM35SH Special Parts		
42	E22-7501	Line guard	1	E20-0717	Left set plate A
43	E19-8101	Anti-reverse pawl	47	E30-4401	Pinion gear
44	E22-7201	Anti-reverse lever	51	E28-0201	Bushing A
45	B33-9801	Anti-reverse lever retainer	68	E30-4901	Drive gear
46	E19-6901	Yoke plate	72	E32-6301	Spacing sleeve
47	E19-7901	Pinion gear	73	E32-6401	Bushing B
48	E30-6903	Right side plate	77	E32-6201	Handle assembly