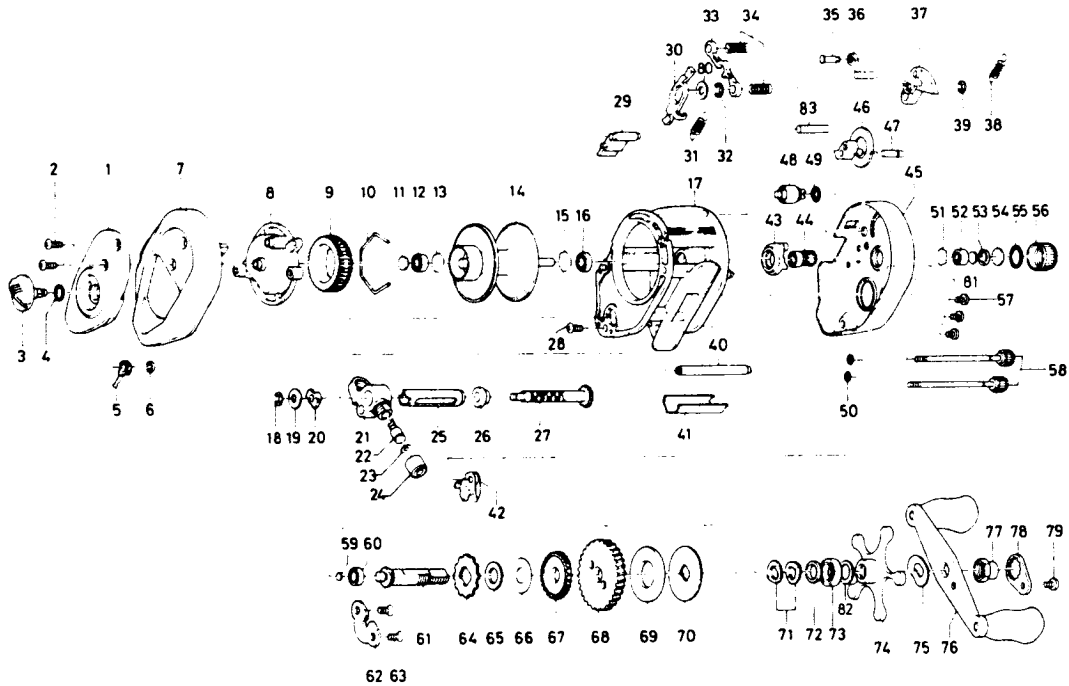


BAITCASTING REEL PT33P



Key No.	Parts No.	Parts Name	Key No.	Parts No.	Parts Name
1	E20-0701	Left set plate A	43	E19-6901	Yoke plate
2	353-4402	Left side plate screw	44	E19-7901	Pinion gear
3	B98-5001	Brake adjusting knob	45	E19-4901	Right side plate
4	637-0601	"O" ring A	46	E19-7301	Flipping/casting selector
5	B54-1701	Brake adjusting gear	47	E19-7401	Flipping/casting selector pin
6	320-4202	Brake adjusting gear retainer	48	E19-5401	Line memo dial
7	E20-0401	Left side plate	49	637-0601	"O" ring B
8	E20-0501	Left set plate B	50	B85-3101	Right side plate screw washer
9	B66-1202	Magnet holder	51	E21-9701	Bearing retainer C
10	B54-3201	Magnet holder ret. ring	52	E08-8001	Ball bearing B
11	375-7405	Spacer A	53	E23-0501	Spacer
12	B35-8601	Ball bearing A	54	B17-5501	Spool tension spring
13	B42-1601	Bearing retainer A	55	171-5201	"O" ring C
14	E23-6201	Spool assembly	56	B85-3401	Cast control cap
15	B42-1601	Bearing retainer B	57	353-4402	Set plate screw
16	B35-8601	Ball bearing A	58	B91-1701	Right side plate screw
17	E19-5501	Frame assembly	59	B12-0201	Drive shaft washer A
18	320-5901	Worm shaft retainer	60	B35-8601	Ball bearing A
19	376-1801	Worm shaft holder washer	61	E19-8401	Drive shaft
20	B71-5601	Worm bearing A	62	E19-9401	Drive shaft retainer
21	E20-8401	Line guide	63	B39-5503	Drive shaft retainer screw
22	121-4212	Line guide pawl	64	E19-9901	Anti-reverse ratchet
23	375-4100	Line guide washer	65	375-7101	Drive shaft washer B
24	342-4802	Pawl cap	66	B96-7401	Drag washer A
25	B99-1801	Level wind guard	67	E20-0001	Worm drive gear
26	E19-9501	Worm bearing B	68	E20-0101	Drive gear
27	E19-9601	Worm shaft	69	375-9403	Drag washer B
28	353-4401	Stabilizer bar screw	70	E20-0201	Key washer
29	E20-3701	Set plate spacer	71	150-8901	Drag spring washer
30	E19-7601	Clutch trip plate	72	E20-8501	Spacing sleeve
31	E19-7701	Clutch trip plate spring	73	E15-4001	Ball bearing C
32	320-1402	Clutch trip plate retainer	74	B86-4205	Star drag
33	E19-7801	Yoke	75	150-9001	Friction washer
34	E23-6401	Yoke spring	76	B85-5102	Handle assembly
35	E19-7201	Clutch trip plate arm pin	77	B86-2402	Handle nut
36	E19-7101	Clutch trip plate arm	78	040-3201	Handle nut plate
37	E19-7001	Clutch cam	79	353-8302	Handle nut plate screw
38	E19-7501	Clutch cam spring	80	371-6903	Clutch trip plate washer
39	B33-9801	Clutch cam retainer	81	374-9102	Spool adjusting cap metal
40	E19-9801	Stabilizer bar A	82	B68-4402	Drag washer C
41	E20-3501	Line guard	83	E19-6801	Stabilizer bar B
42	E19-8101	Anti-reverse pawl			