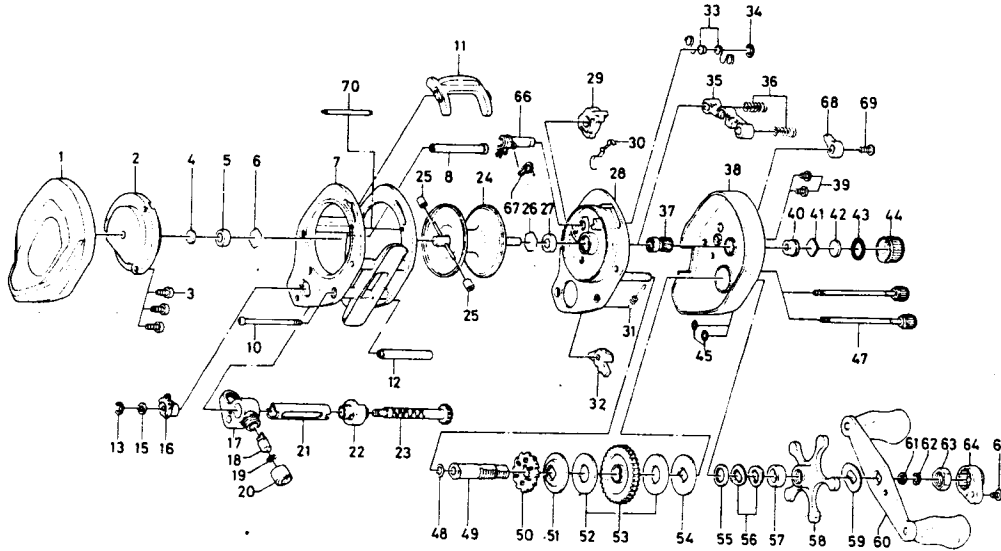


## BAITCASTING REEL SA35



Key No.	Parts No.	Parts Name	Price Each	Key No.	Parts No.	Parts Name	Price Each
1	B85-5203	Left side cover	3.50	36	144-7101	Pinion yoke spring	0.50
2	B86-0801	Set plate (left)	11.95	37	B85-4401	Pinion gear	8.05
3	B83-4402	Left side cover screw	0.35	38	B90-3404	Right side cover	9.40
4	375-7405	Bearing metal washer	0.50	39	B36-0401	Right side cover screw (short)	0.50
5	B55-0301	Bearing	1.30	40	B64-3101	Bush	0.60
6	B42-1601	Bearing retainer	0.40	41	B17-5401	Spool adjusting cap metal A	0.40
7	B93-9402	Frame	14.85	42	B17-5501	Spool adjusting cap metal B	0.40
8	B85-9601	Frame post A	1.65	43	171-5201	"O" ring	0.55
10	B86-0101	Frame post screw	0.45	44	B85-3403	Right spool cap	1.20
11	B85-2302	Clutch lever	1.65	45	B85-3101	Right side cover screw washer A	0.40
12	B86-0001	Frame post B	1.10	47	B91-1702	Right side cover screw (long)	2.20
13	320-5901	Worm shaft retainer	0.40	48	373-7611	Gear shaft washer A	0.40
15	373-1302	Worm shaft holder washer	0.35	49	B86-5001	Gear shaft	2.80
16	B94-3701	Worm shaft holder	0.35	50	B86-5101	Ratchet	1.10
17	B57-8701	Line guide	4.95	51	B85-4801	Gear shaft washer B	0.60
18	B81-0101	Line guide pin	1.20	52	B36-0203	Drag washer A	0.50
19	375-4100	Line guide pin washer	0.40	53	B85-4901	Drive gear	7.55
20	342-4801	Line guide nut	0.75	54	B36-0301	Drag washer B	0.50
21	B85-9701	Worm shield	2.45	55	373-7800	Drag washer C	0.35
22	B85-6401	Shield bush	0.70	56	150-8901	Spring washer	0.40
23	B85-9801	Worm shaft	4.20	57	634-5801	Spacing sleeve	0.40
24	B86-1201	Spool	13.50	58	B57-8201	Star drag	3.15
25	B35-2701	Brake collar	0.50	59	150-9001	Handle washer	0.40
26	B42-1601	Bearing retainer	0.40	60	B85-5101	Handle	4.40
27	B55-0301	Bearing	1.30	61	B41-1701	Handle nut washer	0.40
28	B85-3507	Set plate (right)	17.35	62	320-8202	Handle nut retainer	0.35
29	B85-4601	Anti-reverse lever	0.80	63	B86-2101	Handle nut	0.80
30	B65-0501	Anti-reverse lever spring	0.40	64	B86-2302	Handle nut plate	0.60
31	B35-8901	Anti-reverse claw spring	0.50	65	351-1801	Handle nut plate screw	0.50
32	B74-0501	Anti-reverse claw	1.10	66	B85-9001	Click claw	0.75
33	B81-5501	Set plate spring	0.40	67	B86-2201	Click claw spring	0.40
34	320-1402	Clutch ret. ring	0.40	68	B85-9501	Click button	0.95
35	B35-9001	Pinion yoke	0.75	69	351-1801	Click button screw	0.50
				70	B93-9101	Frame post C	0.50