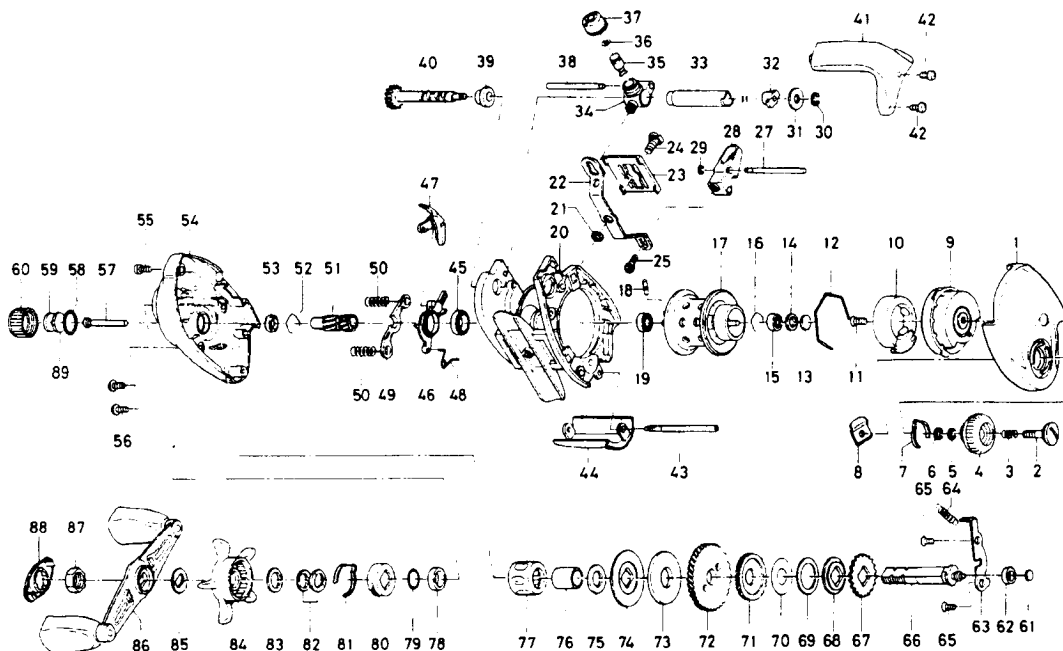


## BAITCASTING REEL TD-X103HILA/X105HILA



### TD-X103HILA

#### KEY

KEY NO.	PART NO.	PART NAME
1	F60-2801	R/S PLT
2	F63-1301	SET PLT SCREW
3	E16-7101	SET PLT SPRING
4	F61-3301	BRAKE ADJ KNOB
5	B33-9801	BRAKE DIAL RET A
6	F63-7701	BRAKE DIAL WASHER
7	F05-1701	BRAKE CLICK SPRING
8	F61-3401	BRAKE DIAL RET B
9	F58-2601	RIGHT SET PLT
10	F57-8101	MAGNET HOLDER
11	B30-4001	RIGHT SET PLT SCREW
12	B54-3201	MAGNET HOLDER RET RING
13	375-7410	SPACER A
14	F57-4303	SPACER B
15	F57-7701	BALL BEARING A
16	E21-9701	BEARING RET B
17	F57-8302	SPOOL
18	F57-8701	SPOOL PIN
19	F58-1901	BALL BEARING B
20	F65-4601	FRAME
21	E52-9804	LEVEL WIND PLT RET
22	F60-0001	LEVEL WIND PLT
23	F60-0801	LEVEL WIND PLT COVER
24	F60-0101	LEVEL WIND PLT SCREW
25	F59-8701	LINE GUIDE SCREW
27	F60-0501	STABILIZER BAR A
28	F60-0301	LINE GUIDE
29	B86-4101	STABILIZER BAR RET
30	320-5901	WORM SHAFT RET
31	376-1801	WORM SHAFT WASHER
32	B71-5601	WORM SHAFT HOLDER A
33	F60-0201	LEVEL WIND GUARD
34	F60-0601	LINE GUIDE PAWL HOLDER
35	121-4212	LINE GUIDE PAWL
36	375-4101	LINE GUIDE WASHER
37	F68-2801	PAWL CAP

### TD-X103HILA

#### KEY

KEY NO.	PART NO.	PART NAME
38	F60-2101	STABILIZER BAR B
39	E19-9501	WORM SHAFT HOLDER B
40	F60-0901	WORM SHAFT
41	F60-1701	REAR COVER
42	351-1001	REAR COVER SCREW
43	F60-2301	STABILIZER BAR C
44	F60-2201	FRONT PLT
45	B86-1701	BALL BEARING C
46	F59-9301	CLUTCH CAM
47	F61-7901	CLUTCH LEVER
48	F68-3001	CLUTCH CAM SPRING
49	F59-9801	YOKE
50	E23-6401	YOKE SPRING
51	F59-9901	PINION GEAR
52	E21-9701	BEARING RET
53	F05-5601	BALL BEARING D
54	F59-8801	L/S PLT
55	351-7801	L/S PLT SCREW A
56	351-1804	L/S PLT SCREW B
57	F59-9001	PINION SHAFT
58	171-5201	O RING
59	B17-5503	SPACER C
60	F57-4401	CAST CONTROL CAP
61	F57-5601	DRIVE SHAFT WASHER
62	F05-5601	BALL BEARING E
63	F63-3001	DRIVE SHAFT RET
64	F68-9501	CLUTCH TRIP PLT SPRING
65	F21-1102	DRIVE SHAFT RET SCREW
66	F65-5301	DRIVE SHAFT
67	F66-0601	A/R RATCHET
68	E30-4701	DRIVE SHAFT WASHER A
69	E30-6101	DRIVE SHAFT WASHER B
70	B96-7401	DRIVE SHAFT WASHER C
71	E30-4801	DRIVE GEAR A
72	F60-1301	DRIVE GEAR B
73	F02-7801	DRAG WASHER