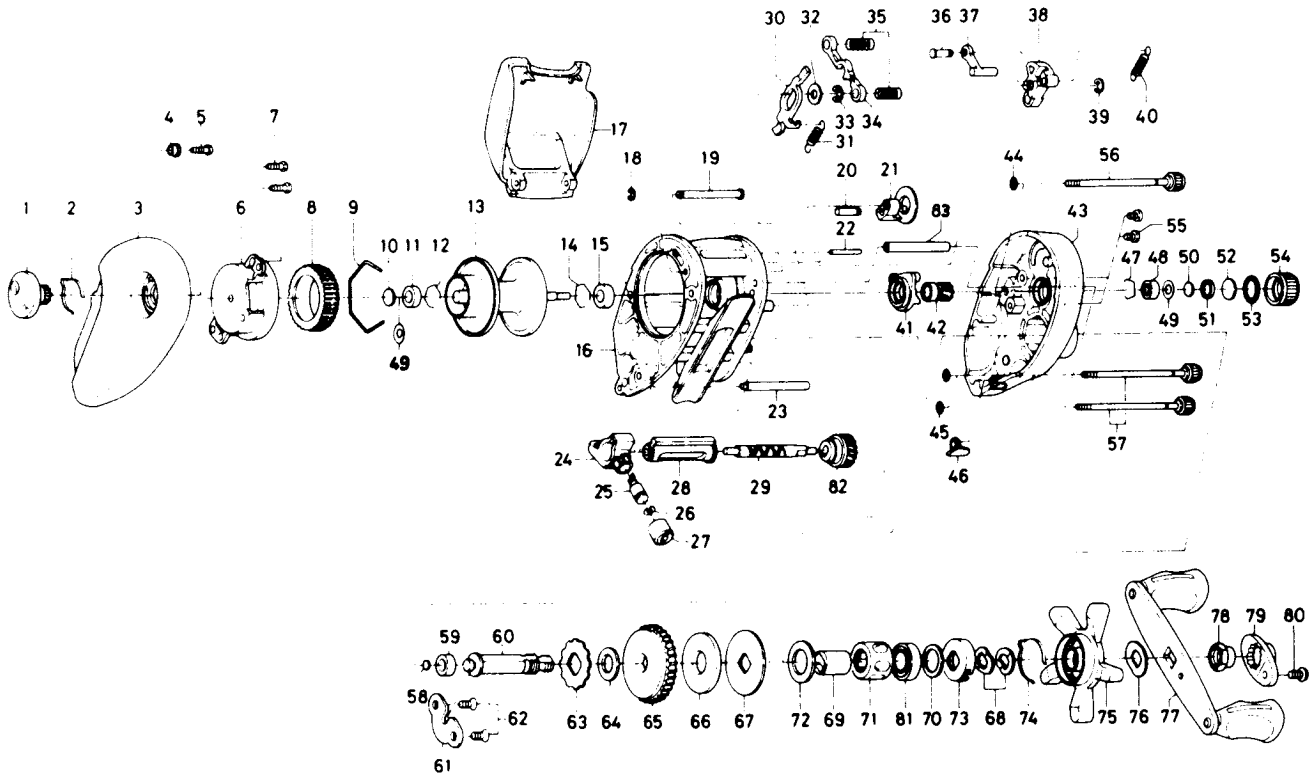


BAITCASTING REEL — TD1Hi-T/TD2Hi-T TOURNAMENT



Key No.	Parts No.	Parts Name	Key No.	Parts No.	Parts Name
1	F02-9607	Brake adjusting knob	30	F02-7101	Clutch trip plate
2	F05-1701	Brake click spring	31	E43-0001	Clutch trip plate spring
3	F02-9209	Left side plate	32	371-6903	Clutch trip plate washer
4	F02-9801	Brake adjusting knob collar	33	320-1402	Clutch trip plate retainer
5	E15-7502	Brake adjusting knob screw	34	E30-4301	Yoke
6	F13-5101	Left set plate	35	E23-6401	Yoke spring
7	E15-7502	Left set plate screw	36	E19-7201	Clutch trip plate arm pin
8	B58-2502	Magnet holder	37	E19-7101	Clutch trip plate arm
9	B54-3201	Magnet holder ret. ring	38	F02-6601	Clutch cam
10	375-7405	Spacer A	39	B33-9801	Clutch cam retainer
11	B35-8601	Ball bearing A	40	F05-3101	Clutch cam spring
12	B42-1601	Bearing retainer A	41	E44-3801	Yoke plate
13	F13-6001	Spool assembly	42	E24-9201	Pinion gear
14	B42-1601	Bearing retainer A	43	F09-6609	Right side plate
15	B35-8601	Ball bearing A	44	B85-3101	"O" ring A
16	F07-4704	Frame assembly	45	B85-3101	"O" ring A
17	E39-3411	Parming plate	46	E16-9502	Line holder
18	B86-4101	Stabilizer bar retainer	47	E21-9701	Bearing retainer B
19	E39-2001	Stabilizer bar A	48	E08-8001	Ball bearing B
20	E39-1901	Flipping/casting selector pin	49	E25-6101	Oiled washer A
21	F02-6701	Flipping/casting selector	50	374-9102	Spool adjusting cap metal
22	E19-6801	Stabilizer bar B	51	E23-0501	Spacer B
23	F02-9001	Stabilizer bar C	52	B17-5502	Spacer C
24	E39-3302	Line guide	53	171-5201	"O" ring B
25	121-4212	Line guide pawl	54	B85-3401	Cast control cap
26	375-4101	Line guide washer	55	353-4402	Set plate screw
27	342-4802	Pawl cap	56	B91-1714	Right side plate screw A
28	F03-6001	Level wind guard	57	B91-1711	Right side plate screw B
29	E24-7102	Worm shaft	58	B12-0201	Drive shaft washer A