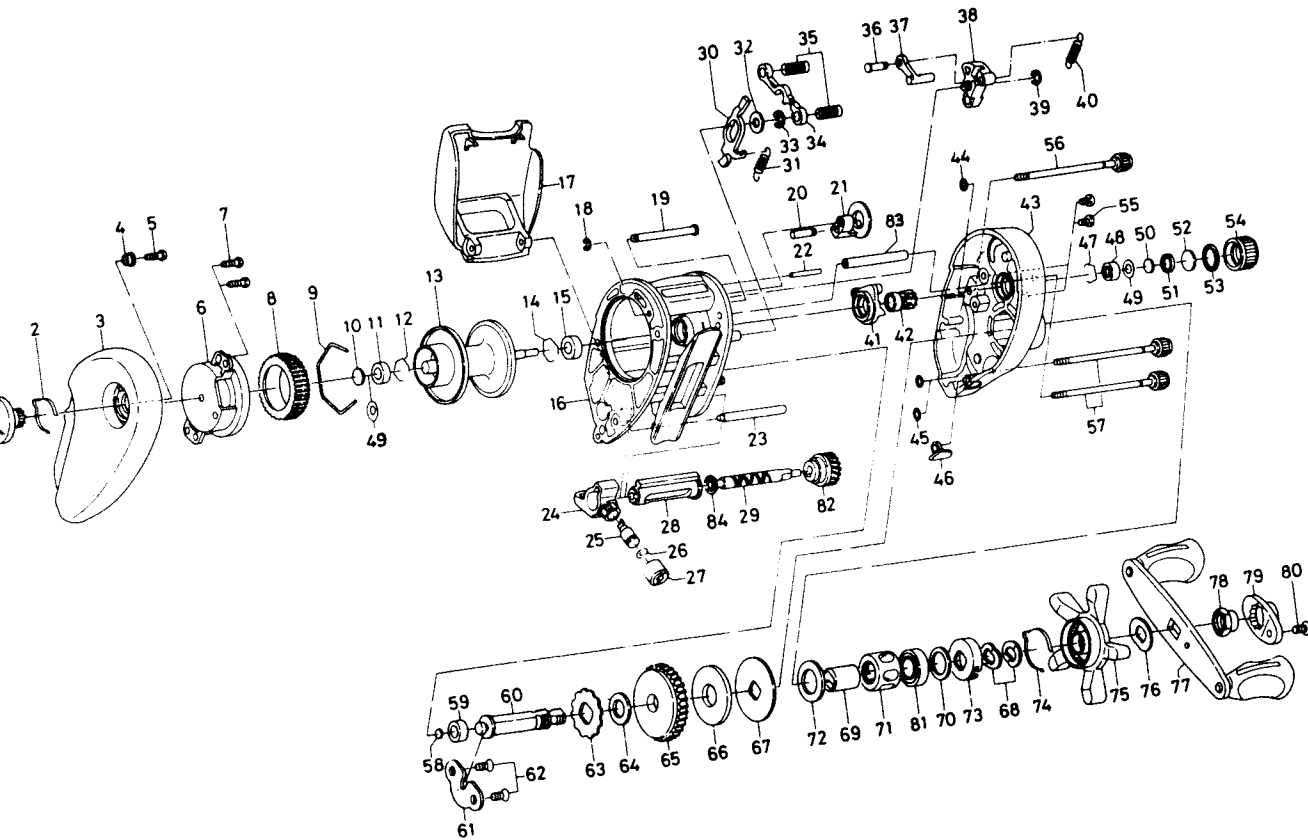


SPINCASTING REEL TD1Pi/2Pi



| Key NO. | Parts No. | Parts Name |
|---------|-----------|-------------------------------|
| 1 | F02-9605 | Brake adjusting knob |
| 2 | F05-1701 | Brake click spring |
| 3 | F02-9201 | Left side -plate |
| 4 | F02-9801 | Brake adjusting knob collar |
| 5 | E15-7502 | Brake adjusting knob screw |
| 6 | F02-9401 | Left set plate |
| 7 | E15-7502 | Left set plate screw |
| 8 | B66-1201 | Magnet holder |
| 9 | B54-3201 | Magnet holder ret. ring |
| 10 | 375-7405 | Spacer A |
| 11 | B35-8601 | Ball bearing A |
| 12 | B42-1601 | Bearing retainer A |
| 13 | F05-0201 | Spool assembly |
| 14 | B42-1601 | Bearing retainer A |
| 15 | B35-8601 | Ball bearing A |
| 16 | F07-4701 | Frame assembly |
| 17 | E39-3409 | Parmling plate |
| 18 | 886-4101 | Stabilizer bar retainer |
| 19 | E39-2001 | Stabilizer bar A |
| 20 | E39-1901 | Flipping/casting selector pin |
| 21 | F02-6701 | Flipping/casting selector |
| 22 | E19-6801 | Stabilizer bar B |
| 23 | F02-9001 | Stabilizer bar C |
| 24 | E39-3301 | Line guide |
| 25 | 121-4212 | Line guide pawl |

| Key NO. | Parts No. | Parts Name |
|---------|-----------|----------------------------|
| 26 | 375-4101 | Line guide washer |
| 27 | 342-4801 | Pawl cap |
| 28 | F03-6001 | Level wind guard |
| 29 | E24-7101 | Worm shaft |
| 30 | F02-7101 | Clutch trip plate |
| 31 | E43-0001 | Clutch trip plate spring |
| 32 | 371-6903 | Clutch trip plate washer |
| 33 | 320-1402 | Clutch trip plate retainer |
| 34 | E30-4301 | Yoke |
| 35 | E23-6401 | Yoke spring |
| 36 | E19-7201 | Clutch trip plate arm pin |
| 37 | E19-7101 | Clutch trip plate arm |
| 38 | F02-6601 | Clutch cam |
| 39 | B33-9801 | Clutch cam retainer |
| 40 | F05-3101 | Clutch cam spring |
| 41 | E44-3801 | Yoke plate |
| 42 | F26-4201 | Pinion gear |
| 43 | F09-6611 | Right side plate |
| 44 | B85-3101 | "O" ring A |
| 45 | B85-3101 | "O" ring A |
| 46 | E16-9502 | Line holder |
| 47 | E21-9701 | Bearing retainer B |
| 48 | E08-8001 | Ball bearing B |

Continued on page 33