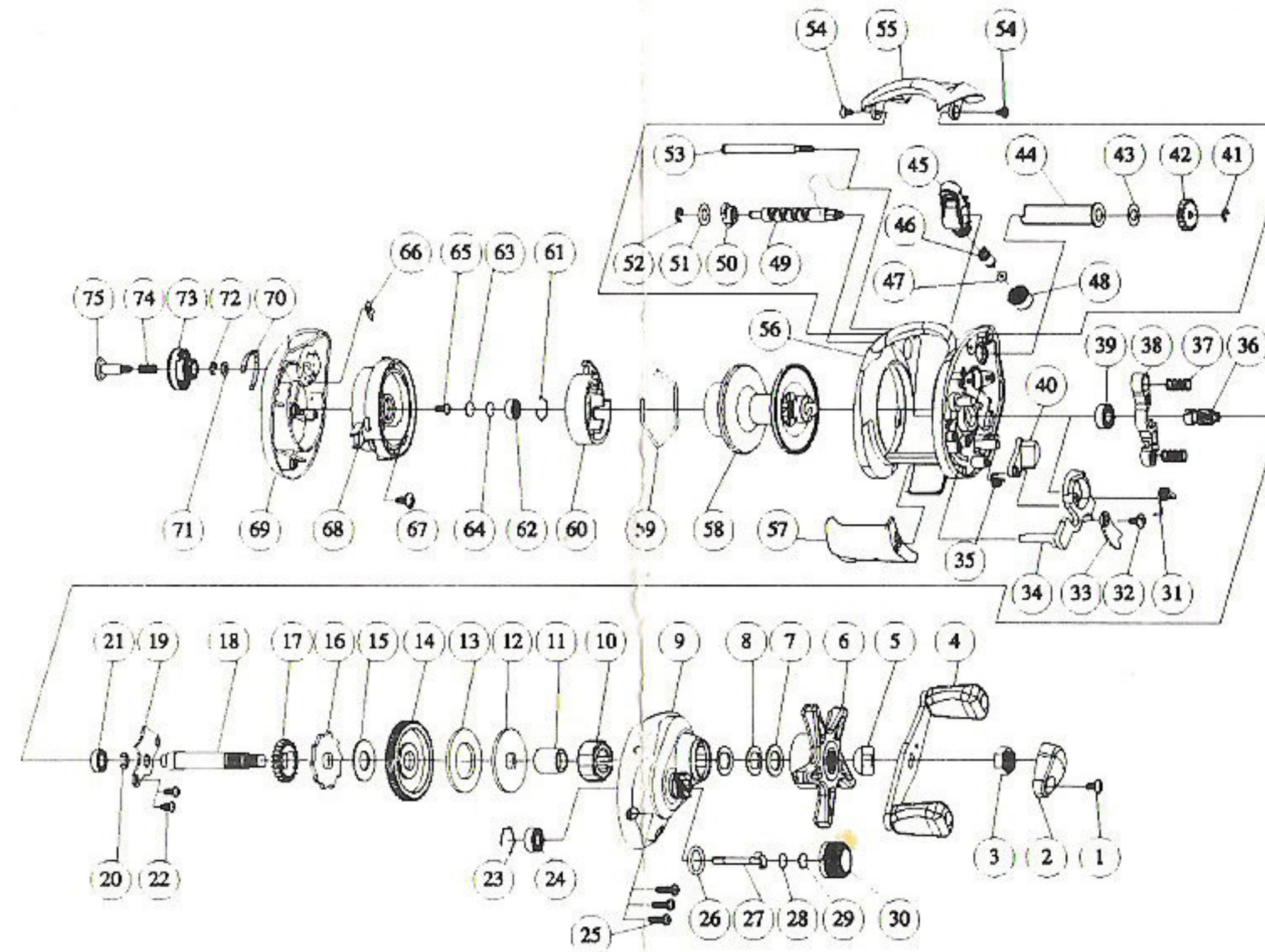


Please order by parts number, not key number
Bitte, Best.-Nr. angeben (Nicht "Key"-Nr.)
Veuillez indiquer le numero de la pièce (Non "Key" No.)

PROCASTER TOURNAMENT 100-4Bi



| Key No. | Parts No. | Parts Name |
|---------|-----------|--------------------------|
| 1 | 6W0181010 | Handle nut plate screw |
| 2 | 6W0270010 | Handle nut retainer |
| 3 | 6W0184010 | Handle nut |
| 4 | 6W0271010 | Handle assembly |
| 5 | 6W0187010 | Friction washer |
| 6 | 6W0272010 | Star drag |
| 7 | 6W0190010 | Spacing sleeve |
| 8 | 6W0191010 | Drag spring washer |
| 9 | 6W0273010 | Right side plate |
| 10 | 6W0194010 | Roller clutch |
| 11 | 6W0195010 | Gear shaft collar |
| 12 | 6W0196010 | Key washer |
| 13 | 6W0197010 | Drag washer |
| 14 | 6W0198010 | Drive gear (A) |
| 15 | 6W0199010 | Drive shaft washer |
| 16 | 6W0200010 | Anti-reverse ratchet |
| 17 | 6W0201010 | Drive gear (B) |
| 18 | 6W0202010 | Drive shaft |
| 19 | 6W0203010 | Drive shaft retainer (A) |

| | | |
|----|-----------|--------------------------|
| 20 | 6W0204010 | Drive shaft retainer (B) |
| 21 | 6W0205010 | Bushing (A) |
| 22 | 6W0206010 | Screw (A) |
| 23 | 6W0207010 | Bearing retainer |
| 24 | 6W0274010 | Ball bearing (C) |
| 25 | 6W0209010 | Right side plate screw |
| 26 | 6W0210010 | "O"ring |
| 27 | 6W0211010 | Pinion shaft |
| 28 | 6W0212010 | Spacer (A) |
| 29 | 6W0213010 | Spacer (B) |
| 30 | 6W0275010 | Cast control cap |
| 31 | 6W0216010 | Clutch cam spring (A) |
| 32 | 6W0217010 | Screw (B) |
| 33 | 6W0218010 | Clutch cam washer |
| 34 | 6W0219010 | Clutch cam (A) |
| 35 | 6W0220010 | Clutch cam spring (B) |
| 36 | 6W0221010 | Pinion gear |
| 37 | 6W0222010 | Yoke spring |
| 38 | 6W0223010 | Yoke |

| Key No. | Parts No. | Parts Name |
|---------|-----------|--------------------------|
| 39 | 6W0224010 | Ball bearing (A) |
| 40 | 6W0225010 | Clutch cam (B) |
| 41 | 6W0226010 | Worm shaft gear retainer |
| 42 | 6W0227010 | Worm shaft gear |
| 43 | 6W0228010 | Worm shaft washer (A) |
| 44 | 6W0229010 | Level wind guard |
| 45 | 6W0230010 | Line guide |
| 46 | 6W0231010 | Line guide pawl |
| 47 | 6W0232010 | Line guide washer |
| 48 | 6W0233010 | Pawl cap |
| 49 | 6W0234010 | Worm shaft |
| 50 | 6W0235010 | Worm shaft holder |
| 51 | 6W0236010 | Worm shaft washer (B) |
| 52 | 6W0237010 | Worm shaft retainer |
| 53 | 6W0238010 | Stabilizer bar |
| 54 | 6W0239010 | Front plate screw |
| 55 | 6W0276010 | Front plate |
| 56 | 6W0242010 | Frame assembly |
| 57 | 6W0243010 | Clutch lever |

| | | |
|----|-----------|-------------------------|
| 58 | 6W0277010 | Spool assembly |
| 59 | 6W0246010 | Magnet holder ret. ring |
| 60 | 6W0247010 | Magnet holder |
| 61 | 6W0207010 | Bearing retainer |
| 62 | 6W0248010 | Ball bearing (B) |
| 63 | 6W0250010 | Spacer (C) |
| 64 | 6W0212010 | Spacer (A) |
| 65 | 6W0206010 | Screw (A) |
| 66 | 6W0251010 | Brake dial retainer |
| 67 | 6W0217010 | Screw (B) |
| 68 | 6W0252010 | Left set plate |
| 69 | 6W0278010 | Left side plate |
| 70 | 6W0255010 | Brake click spring |
| 71 | 6W0256010 | Brake dial washer |
| 72 | 6W0257010 | Brake dial retainer |
| 73 | 6W0279010 | Brake adjusting knob |
| 74 | 6W0260010 | Set plate spring |
| 75 | 6W0280010 | Set plate screw |