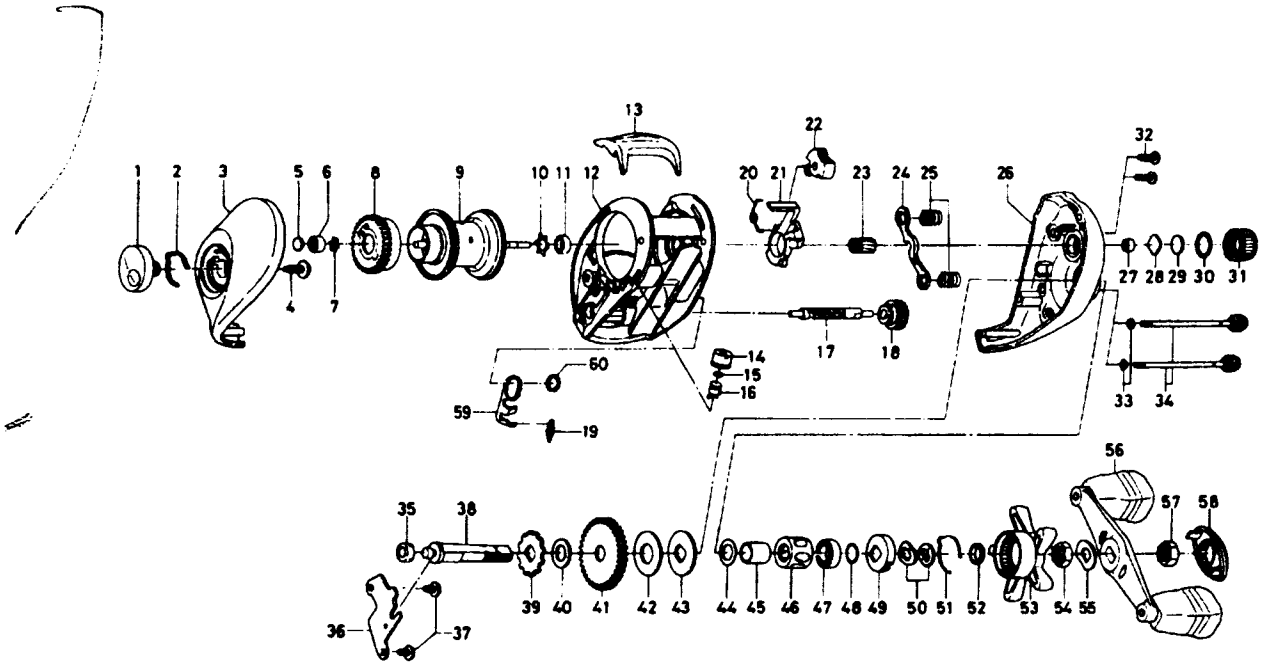


BAITCASTING REEL PROCASTER PR-X153i



| Key No. | Parts No. | Parts Name | Key No. | Parts No. | Parts Name |
|---------|-----------|----------------------------|---------|-----------|----------------------------|
| 1 | F40-3603 | Brake, adjusting knob | 33 | B85-3101 | "O" ring B |
| 2 | F03-2401 | Brake click spring | 34 | B91-1727 | Right side plate screw |
| 3 | F40-3303 | Left side plate | 35 | B35-8601 | Ball bearing D |
| 4 | B84-2102 | Brake adjusting knob screw | 36 | F43-9701 | Drive shaft retainer |
| 5 | 374-9102 | Spacer A | 37 | F21-2201 | Drive shaft retainer screw |
| 6 | E08-8001 | Ball bearing A | 38 | F41-1201 | Drive shaft |
| 7 | F41-2301 | Bearing retainer A | 39 | E32-7701 | Anti-reverse ratchet |
| 8 | E23-9501 | Magnet holder | 40 | 375-7103 | Drive shaft washer |
| 9 | F40-8501 | Spool assembly | 41 | F40-2501 | Drive gear |
| 10 | F45-0601 | Bearing retainer B | 42 | B36-0209 | Drag washer |
| 11 | B35-8601 | Ball bearing B | 43 | B36-0303 | Key washer |
| 12 | F40-8801 | Frame assembly | 44 | E42-5401 | Spacing sleeve A |
| 13 | F40-2003 | Clutch lever | 45 | F40-7901 | Gear shaft collar |
| 14 | F40-2801 | Pawl cap | 46 | F40-8001 | Roller clutch |
| 15 | 375-4101 | Line guide washer | 47 | F05-5501 | Ball bearing E |
| 16 | 121-4214 | Line guide pawl | 48 | B55-3801 | Bearing washer |
| 17 | E45-1201 | Worm shaft | 49 | F02-8201 | Click leaf spring holder |
| 18 | F06-1301 | Worm shaft gear | 50 | 150-8901 | Drag spring washer |
| 19 | 144-2501 | Clutch trip plate spring | 51 | F03-2401 | Click leaf spring |
| 20 | E24-9001 | Clutch cam spring | 52 | B97-4901 | Spacing sleeve B |
| 21 | E23-7401 | Clutch cam | 53 | F40-3203 | Star drag |
| 22 | E24-9103 | Flipping/casting selector | 54 | B43-3601 | Drag nut |
| 23 | F40-9202 | Pinion gear | 55 | 150-9001 | Friction washer |
| 24 | E23-7701 | Yoke | 56 | F40-8901 | Handle assembly |
| 25 | E16-7101 | Yoke spring | 57 | B43-3601 | Handle nut |
| 26 | F40-7810 | Right side plate | 58 | F40-8402 | Handle nut retainer |
| 27 | E24-8501 | Ball bearing C | 59 | F42-8801 | Clutch trip plate |
| 28 | B17-5401 | Spool adjusting cap metal | 60 | F44-0201 | Clutch trip plate washer |
| 29 | B17-5503 | Spacer B | | | |
| 30 | 171-5201 | "O" ring A | | | |
| 31 | F40-3003 | Cast control cap | | | |
| 32 | E33-0401 | Set plate screw | | | |