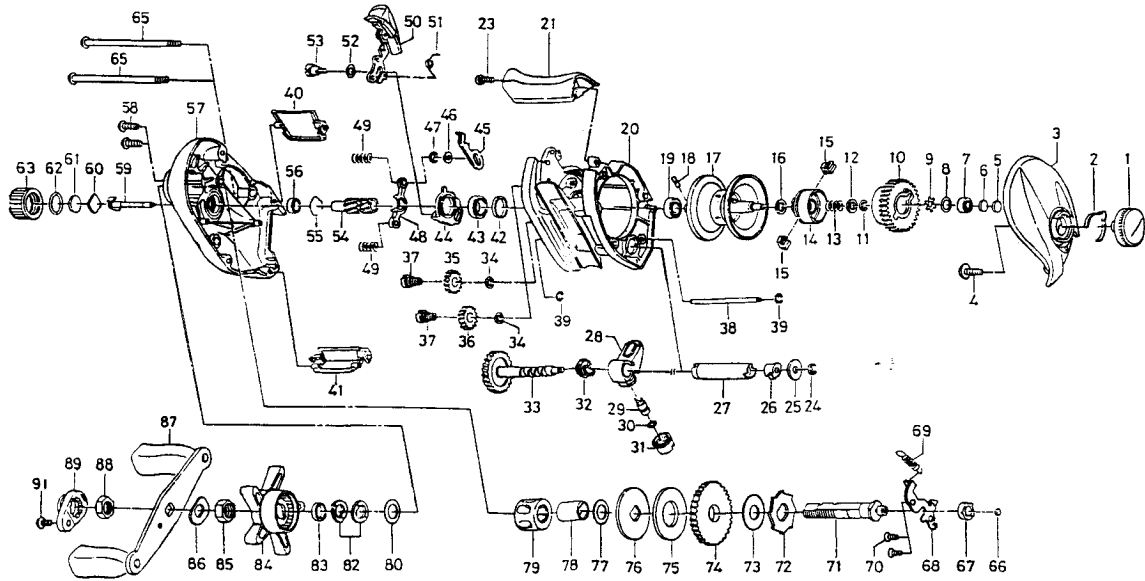


PROCASTER-X103HLA



| Key No. | Parts No. | Parts Name | Key No. | Parts No. | Parts Name |
|---------|-----------|------------------------|---------|-----------|------------------------|
| 1 | F87-6902 | BRAKE ADJ KNOB | 50 | F86-5301 | CLUTCH LEVER |
| 2 | F05-1701 | BRAKE CLICK SPRING | 51 | F94-5001 | CLUTCH LEVER SPRING |
| 3 | F96-7601 | R/S PLT | 52 | F83-5401 | CLUTCH LEVER WASHER |
| 4 | B84-2102 | SET PLT SCREW | 53 | F83-5301 | CLUTCH LEVER SCREW |
| 5 | 374-9103 | SPACER A | 54 | F92-3401 | PINION GEAR |
| 6 | 374-9105 | SPACER B | 55 | E21-9701 | BEARING RET B |
| 7 | F40-3701 | BUSHING A | 56 | F05-5601 | BALL BEARING B |
| 9 | F41-2301 | BEARING RET A | 57 | F96-5902 | L/S PLT |
| 10 | F87-6601 | MAGNET HOLDER | 58 | 351-1107 | L/S PLT SCREW A |
| 11-19 | Z01-1740 | SPOOL | 59 | F93-0201 | PINION SHAFT |
| 20 | F92-3102 | FRAME | 60 | B17-5503 | SPOOL ADJ CAP METAL |
| 21 | F91-7002 | REAR COVER | 61 | B17-5402 | SPACER C |
| 23 | 351-1101 | REAR COVER SCREW | 62 | 171-5201 | O RING |
| 24 | 320-5901 | WORM SHAFT RET | 63 | F40-3002 | CAST CONTROL CAP |
| 25 | F65-5501 | WORM SHAFT WASHER | 65 | F45-6701 | L/S PLT SCREW B |
| 26 | B71-5601 | WORM SHAFT HOLDER | 66 | F64-7201 | DRIVE SHAFT WASHER A |
| 27 | F90-5001 | LEVEL WIND GUARD | 67 | B55-0301 | DRIVE SHAFT BUSH |
| 28 | F96-7701 | LINE GUIDE PAWL HOLDER | 68 | F83-5701 | DRIVE SHAFT RET |
| 29 | 121-4212 | LINE GUIDE PAWL | 69 | F68-9501 | CLUTCH TRIP PLT SPRING |
| 30 | F95-0200 | LINE GUIDE WASHER | 70 | F21-1101 | DRIVE SHAFT RET SCREW |
| 31 | F40-2801 | PAWL CAP | 71 | F96-6101 | DRIVE SHAFT |
| 32 | F93-2201 | BUSHING B | 72 | F76-1701 | A/R RATCHET |
| 33 | F93-3201 | WORM SHAFT | 73 | F19-0101 | DRIVE SHAFT WASHER B |
| 34 | B41-1701 | DRIVE GEAR WASHER | 74 | F92-3501 | DRIVE GEAR |
| 35 | F95-8401 | DRIVE GEAR A | 75 | 375-9405 | DRAG WASHER A |
| 36 | F95-8501 | DRIVE GEAR B | 76 | E20-0201 | KEY WASHER |
| 37 | F92-3301 | DRIVE GEAR SCREW | 77 | E42-5401 | SPACING SLEEVE |
| 38 | F97-3201 | STABILIZER BAR | 78 | F82-1301 | GEAR SHAFT COLLAR |
| 39 | B86-4101 | STABILIZER BAR RET | 79 | F58-0601 | ROLLER CLUTCH |
| 40 | F91-7204 | PALMING PLT | 80 | 373-7810 | DRAG WASHER B |
| 41 | F91-7102 | FRONT PLT | 82 | 150-8901 | DRAG SPRING WASHER |
| 42 | F83-4701 | BALL BEARING COLLAR | 83 | F11-8801 | HANDLE COLLAR |
| 43 | B86-1702 | BALL BEARING A | 84 | F40-3202 | STAR DRAG |
| 44 | F92-3901 | CLUTCH CAM | 85 | B43-3602 | DRAG NUT |
| 45 | F83-4801 | CLUTCH TRIP PLT | 86 | 150-9001 | FRICITION WASHER |
| 46 | F77-4603 | CLUTCH TRIP PLT WASHER | 87 | F93-8401 | HANDLE |
| 47 | 320-5901 | CLUTCH TRIP PLT RET | 88 | B43-3602 | HANDLE NUT |
| 48 | F83-5801 | YOKE | 89 | F05-4403 | HANDLE NUT PLT |
| 49 | F58-8001 | YOKE SPRING | 91 | 351-1803 | HANDLE NUT PLT SCREW |