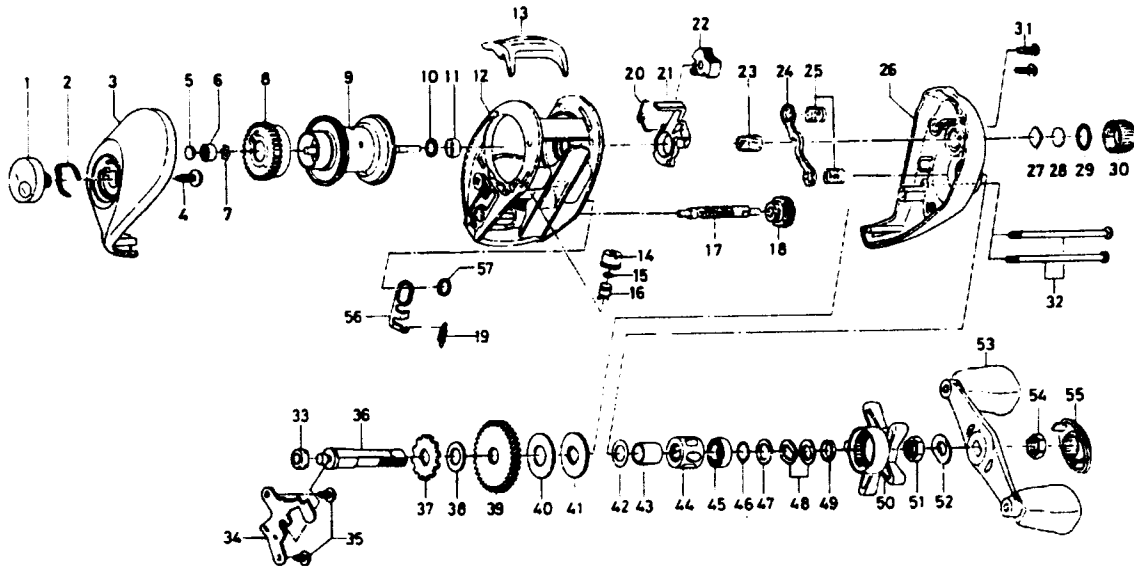


BAITCASTING REEL TRIFORCE TE-X150i



| Key No. | Parts No. | Parts Name | Key No. | Parts No. | Parts Name |
|---------|-----------|----------------------------|---------|-----------|----------------------------|
| 1 | F40-3608 | Brake adjusting knob | 33 | B55-0301 | Bushing C |
| 2 | F03-2401 | Brake click spring | 34 | F43-9701 | Drive shaft retainer |
| 3 | F40-3308 | Left side plate | 35 | F21-2201 | Drive shaft retainer screw |
| 4 | B84-2102 | Brake adjusting knob screw | 36 | F41-1201 | Drive shaft |
| 5 | 374-9102 | Spacer A | 37 | E32-7701 | Anti-reverse ratchet |
| 6 | F40-3701 | Bushing A | 38 | 375-7103 | Drive shaft washer |
| 7 | F41-2301 | Bearing retainer | 39 | F40-2501 | Drive gear |
| 8 | E23-9501 | Magnet holder | 40 | B36-0209 | Drag washer |
| 9 | F43-4301 | Spool assembly | 41 | B36-0303 | Key washer |
| 10 | F45-0601 | Bushing retainer | 42 | E42-5401 | Spacing sleeve |
| 11 | E35-1501 | Bushing B | 43 | F40-7901 | Gear shaft collar |
| 12 | F50-5601 | Frame assembly | 44 | F40-8001 | Roller clutch |
| 13 | F40-2001 | Clutch lever | 45 | F05-5501 | Ball bearing |
| 14 | 375-0801 | Pawl cap | 46 | B55-3801 | Bearing washer A |
| 15 | 375-4100 | Line guide washer | 47 | 373-7810 | Bearing washer B |
| 16 | 121-4214 | Line guide pawl | 48 | 150-8901 | Drag spring washer |
| 17 | E45-1201 | Worm shaft | 49 | B97-4901 | Spacing sleeve |
| 18 | F06-1301 | Worm shaft gear | 50 | F40-3201 | Star drag |
| 19 | 144-2501 | Clutch trip plate spring | 51 | B43-3601 | Drag nut |
| 20 | E24-9001 | Clutch cam spring | 52 | 150-9001 | Friction washer |
| 21 | E23-7401 | Clutch cam | 53 | F43-8301 | Handle assembly |
| 22 | E24-9101 | Flipping/casting selector | 54 | B43-3601 | Handle nut |
| 23 | F40-9202 | Pinion gear | 55 | F40-8403 | Handle nut retainer |
| 24 | E23-7701 | Yoke | 56 | F42-8801 | Clutch trip plate |
| 25 | E16-7101 | Yoke spring | 57 | F44-0201 | Clutch trip plate retainer |
| 26 | F40-7812 | Right side plate | | | |
| 27 | B17-5401 | Spool adjusting cap metal | | | |
| 28 | B17-5503 | Spacer B | | | |
| 29 | 171-5201 | "O" ring | | | |
| 30 | F40-3001 | Cast control cap | | | |
| 31 | E33-0401 | Set plate screw | | | |
| 32 | E28-4901 | Right side plate screw | | | |