



# INSTRUCTION MANUAL

# MAXXIMUS ELECTRIC

Thank you for buying electric reel of Fladen Fishing AB.

Please be aware of the instructions before use, and we ask you to use it according to the safe and correct method of instructions.

Also please keep this manual with reel because this includes very important details about the reel use.

## CONTENTS

1. Attention of safety	6. Control box	8. Operation method	* Shelf mode
-----1	-----7	* Approximation auto-stop	-----19~20
2. Attention of handling	7. Preparation before use	-----13	* Low mode
-----2~3	* Power supply connection method	* Setting-up the surface of water	-----21~22
3. Handling method of reel	-----8	-----14~16	* Correction of original line cut
-----4	* Fishing line data input method	* Fishing line delivery function	-----23
4. Main function & feature	-----9~12	-----17	9. Safety function
-----5		* Automatic winding & the change of speed	-----24~25
5. Each part's name & function		-----18	10. When fault is doubtful
-----6			-----26

# ATTENTION OF SAFETY

Please read certainly before use

## Warning



- Please take care that the finger would not be got between level wind and main body.

## Attention



- Please don't hold the fishing line during it is untying fast. You may get your finger cut by fishing line.
- Please don not use the reel for the other use except the fishing.
- Stain clothes etc. because grease and gasoline was added for the turning segment of reel. Please take care not to be.



- Please do not touch the revolving parts during the rolling of reel. You may get the wound.
- Push on/off switch after you check if the stopper's position is "on" or not.



- Do not disassemble / convert the reel. That can be the reason of mechanical trouble.



- Use only the battery, designated voltage. You can get burned from calorification in case that you use others except the designated.



- When the reel is soaked into the water, please do not wash it.

## 2

## Attention of handling

### 1 Regarding power supply

Power supply is D.C 12V (exclusive use). It's not available for you to use others (A.C 110V or 220V for home, D.C24V for ship) except the designated power supply.

- Low volume battery can not show the electric reel's capacity normally owing to the sudden drop of electric pressure. We advise you to use the battery over 1000mAh.
- Because 12V power supply have a occasion that the voltage is unstable according to the state of wiring or generator, normal performance is impossible because the protection channel of this occasion reel operates or there is occasion that operation is suspended. Please use the exclusive battery only for electric reel.
- Please use fully charged battery.
- Because applying an electric current badness happens by rust etc.of terminal, there is normally malfunctioned. After cleans cleanly or removes the rust in case of rust etc. Please use.



DC 12V  
(1000mAh)



AC110V, 220V



DC24V

● Please confirm as below list before leaving ●

- If the battery leave alone, it is possible that natural discharge can lower the capacity. Before leaving , the battery is certainly charged.
- In power supply of boat, there is an occasion that use is impossible by connecting termnal shape etc. We'll encourage something to confirm before use.

## Attention of handling

### 2 Regarding power supply cord

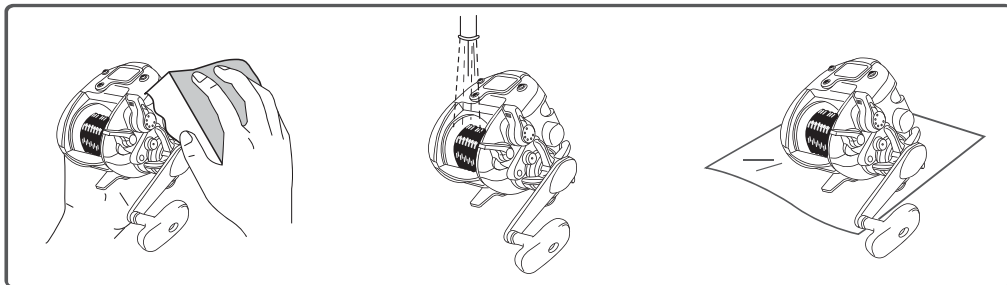
- Connection of power certainly uses supply cord that is enclosed with reel in package box.
- If you remodel supply cord connection etc. except pure attachment, reel can malfunction normally when use supply cord.
- You don't handle violently sources of electricity cord.  
If you wind it disorderly on the reels or step it or fold and bend it, those actions can cause failure such as a disconnection.
- After use, clean contaminated parts with a soft towel which is wet with water and dry and keep it.  
(Don't wash under the water.)
- When you need to pull out the cord, certainly have to seize connector parts.

### 3 Regarding reel's main body

- In case the fishing line is hooked a obstacle on the bottom, you don't pull the fishing rod or reel by constraint.
- Please handle carefully in order not to get a shock such as falling.
- When setting up to fishing rod holder, please observe especially not to be shocked to back of reel and supply cord.

3

## Handling method of reel



**1** Please clean contaminated parts of reel's body with a sponge or towel which is wet with a detergent.

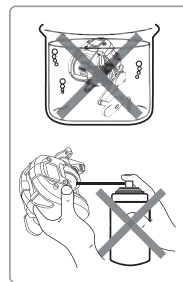
**2** Remove a detergent and contaminated material by spraying water. Remove also the salt on the spool part by spraying water.

**3** After removing the moisture, dry it in the shade.



### Attention

- Please use a neutral detergent.
- Please do not wash reels under the water.
- In case of leaving alone a humid place, this can cause modification or quality deterioration. After washing, keep it in the airy and high temperature and not humid place.
- Never oil in the drag part. This can cause power deterioration or trouble.
- Please put on connector cap, when you do not use for connector protection.



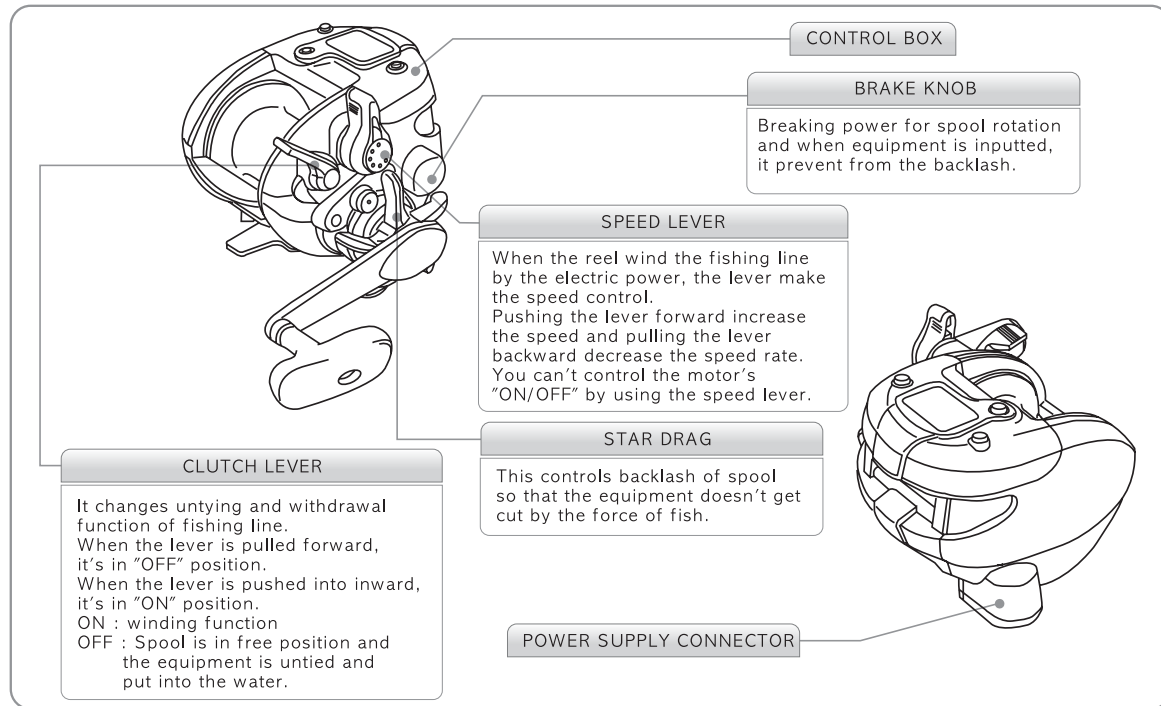
## 4

## Primary function and characteristics

Speed lever	It's possible to set up on the situation and adjust the winding speed.
Perfect drag	Soft adjustment / Power / Adoption of durable carbon material
Compact body	Comfortable design for the grip and operation
Auto stop in the side of boat	It's possible to adjust a stop point with fishing equipment
Setting up the surface of water	According to set-up "0"m in the surface of water, this is possible to set exact capture the depth of water.
Release of the fishing line	It's possible to input the equipment to the wanted place more quickly with the motor helping the spool's rotation
Establishment of the shelf	When inputting your equipment, the alarming function let you know by the memorizing the depth of water which fish caught.
Memory of auto swimming shelf	It's possible to set up and confirm the swimming shelf that the fish bited
Bottom mode	Displaying the equipment's position from the bottom
Correction of original line cut	It's possible to correct the fishing line data when fishing line is cut during the fishing

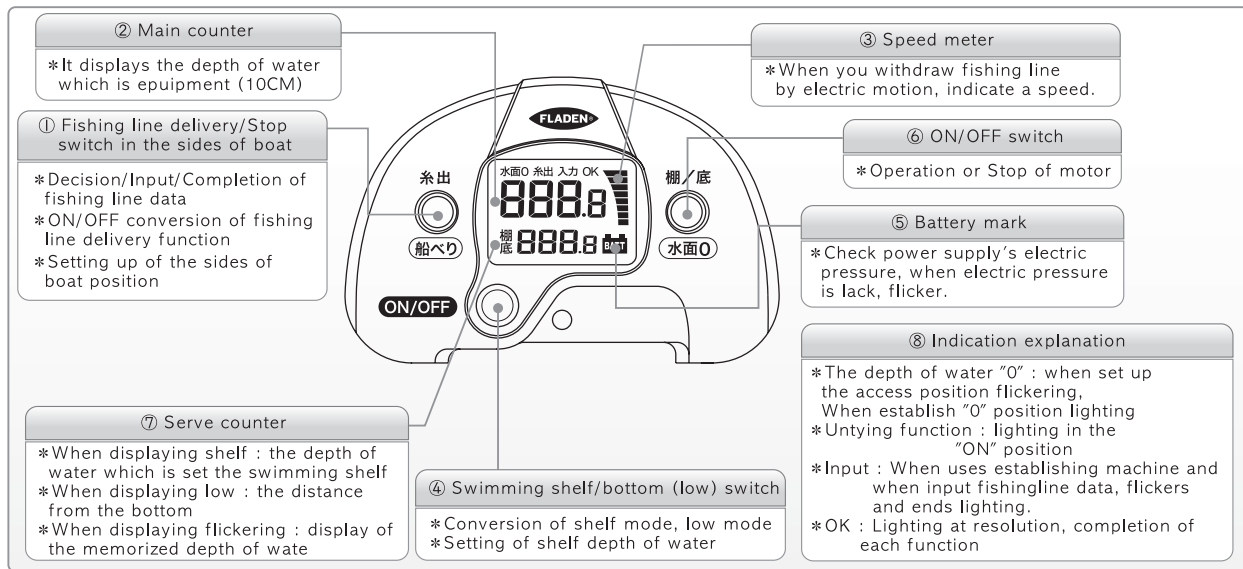
5

## Each part's name & function



## 6

## Each part's description of control box



## Attention

- ① It displays a liquid crystal screen with lighting in picture for explanation.
- ② In the counter indication , below -10℃ ~ over 60℃, there is difficulty in interpretation because of liquid crystal special characteristic. Please know well this point.



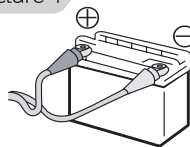
## 7

## Preparation before use

## Power supply connecting method

- ❶ Please connect power supply's clip in battery.  
Connet plus terminal - red clip and minus terminal  
- black clip (refer to picture1)
  - ❷ Put in deeply and assemble the power supply's  
"parts and fix it certainly by a nut."  
(refer to picture 2)
  - ❸ - 1 if it's c onnected exactly, displayed the initial.
  - ❸ - 2 if fishing line's data is inputted,  
display like as picture 4 after setting screen.
  - In (picture 3) (picture 4), battery mark is flickering  
but if electric pressure is normal, it will be disappeared in 5 minutes.  
In the event that battery mark is not disappeared,  
it is possible to drop the electric pressure.  
Please exchange it or charge it.
  - In the event of (picture 4 : input completion of fishing line data),  
it is impossible to wind automatically within the sides of boat  
stop(5M) for safety. ON/OFF switch is not not worked.
- \* Indication is established by 5M in case that do not establish a part  
\* If you have signed the depth of water's indication more than 5M,  
an automatic winding is possible.

Picture 1



Picture 2



Picture 3



Picture 4



Flickering



## Attention

- \* If you connect the power supply again, it works back up function.
- \* After disconnection, if you reconnect within 15 minutes, there is no back up but no problem.

## Preparation before use

### Fishing line data input methods-A

- \* Input a data with winding fishing line on the reel.
- In case of use a inputted fishing line data.
  - \* It's prepared 4pcs of fishing line data on this reel.

PE4-400m PE5-300m PE6-300m PE8-200m

- ❶ Please connect the fishing line to the spool by passing level wind.
- ❷ Please confirm picture 5's displaying image after connection.
- ❸ Push the shooting out switch and the sides of a boat switch coincidentally for 3 seconds. It displays like (picture 6).
- ❹ Push the shooting out switch and select your fishing line's count and length.

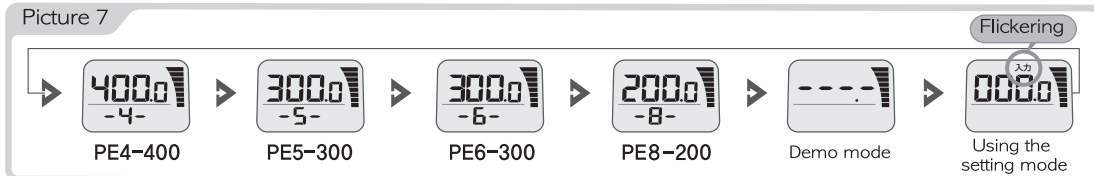
Picture 5



Picture 6



Picture 7



## 7

## Preparation before use

- ⑤ Please push ON/OFF switch and wind the fishing line after you confirm whether fishing line which is winded and selected fishing line data concord or not.
- ⑥ The motor is automatically stopped in front of selected fishing line's 15M.
- ⑦ The rest 15M of fishing line should be winded all the way by using the handle or "ON/OFF" switch.
- ⑧ After winding is finished, please complete the input by pushing the "swimming shelf / bottom" switch. Visual display is changed like (picture8).

Picture 8

- In the case of winding PE 6 line 300M.



PE6-300



PE6-300



Initial screen



The input is completed



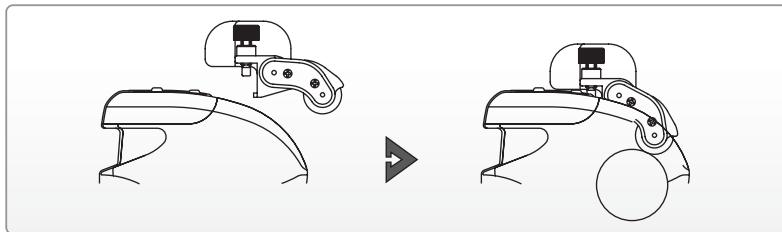
## Attention

- ① When you wind the fishing line, you need to give the load of 1.0kg ~ 1.5kg.
- ② If you push the sides of boat switch in demo screen, the set up data is gone and display the demo mode Plesae start from ground zero.
- ③ If any errors cause during your operation, please push the "swimming shelf / button" switch and finish the working and restart it from the beginning.
- ④ Indication of the depth of water is set below  $\pm 3$ , it is possible to happen more than little by the emission range or expansion and contraction.

## Preparation before use

### Fishing line data input method-B

- Fishing line data input method by using the set-up button.
  - \* Please install setting machine after connect original line on the spool in case of winding original line on the spool.
- ① Please connect on the spool passing fishing line by level wind.
- ② Please confirm that screen with (picture 9) is displayed after connect power.
- ③ Push the shooting out switch and the sides of boat stop switch coincidentally for 3 seconds. It displays like as (picture 10)
- ④ Push the shooting out switch 5 times and selects input mode. (refer to Picture 11)
- ⑤ Loosen setting machine's screw and set in main frame picking up handle with finger. Screw and fix certainly.



Picture 9



Picture 10



Picture 11 Flickering



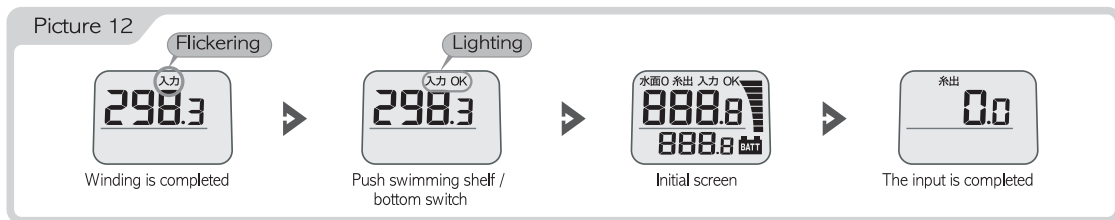
## 7

## Preparation before use

- ⑥ Push ON/OFF switch and wind the fishing line.
- ⑦ After winding the fishing line, please push "ON/OFF" switch and stop it.
- ⑧ If you finish winding, push the shooting out switch. If screen is change like as (picture 12), that is the completion of input.

\* The input is possible when you wind the line more than 50M.

Picture 12

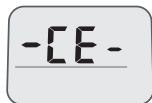


\* When you use the economizing line, please wind the economizing line on the spool and attach the set-up equipment.



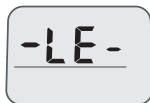
## Attention

- ① Indication of the depth of water is set below  $\pm 3\%$ , it is possible to happen more than little by the emission range or expansion and contraction.
- ② When you finish the completion of input by push the shooting out switch, displaying image is just like as below, it's possible input method's errors or control box's errors.



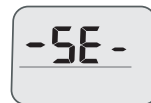
Error in the control box

• Restart from the beginning



bad spool rotation

• Check the drag position



setting error

• reset after checking

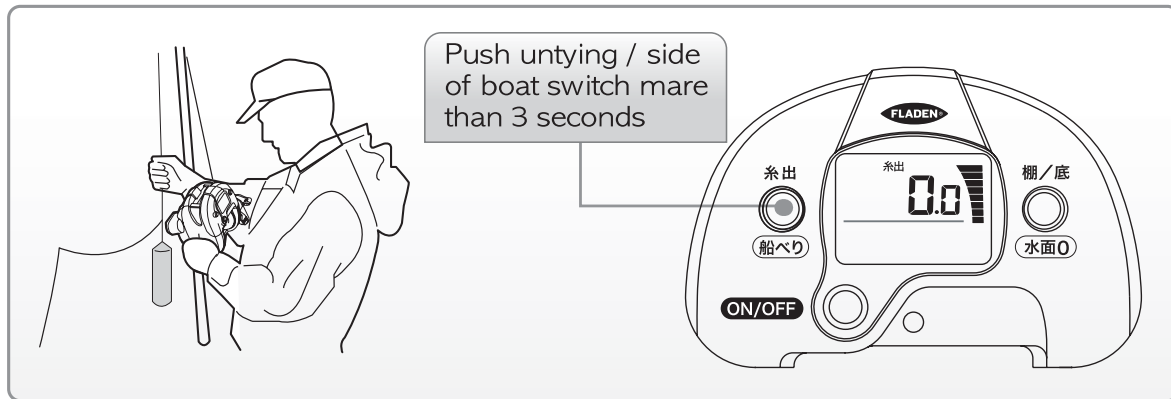
## Operation methods

### 1 The sides of boat's automatic stop

- When you stand up your fishing rods, you need to set up automatic winding function's stop point from hand range to equipment.

Operation sequence ① : connect the power supply after the delivery fishing line from reels.

Operation sequence ② : in order to reach within one's hand, adjust the length of fishing line.

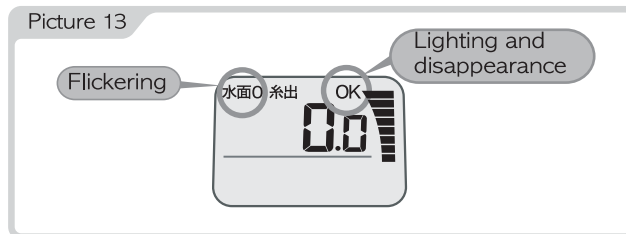


## Operation methods

Operation sequence ③ : push the shooting out switch more than 3 seconds.  
if the image is displayed like as (picture13),  
that means setting up of stop point is completed

\* At this time "the depth of water" is flickering.

\* It is possible that "the depth of water" setting up goes ahead.



### Attention

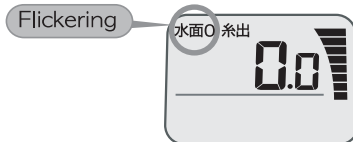
- ① If you input your equipment under the undone the sides of boat setting up, the sides of boat stop position is set up 5M.
- ② When you finish completion of input by pushing the shooting out switch, displaying image is just like as below, it is possible input methods errors or control box's errors.
- ③ When doesn't set (surface of water "0") during flickering, there is no problem even if do fishing with inputting equipment. (Surface of water "0") is deleted automatically because it is more than counter indication 10.0.

## Operation methods

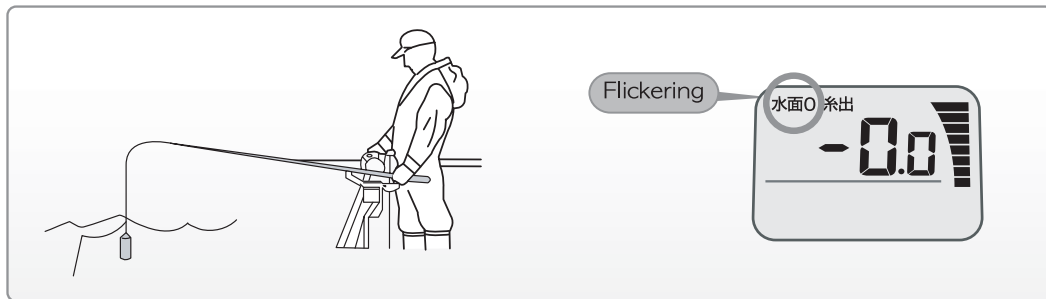
### 2 The surface of water "0" setting up

- In order to search swimming shelf, you need to set up the surface of the water "0".  
\* When you finish the sides of boat stop point, the surface of the water "o" is flickering in the screen. (refer to picture 14)

Picture 14



Operation sequence ① : First, you stand up your fishing rods and adjust handle in order to come the surface of the water.



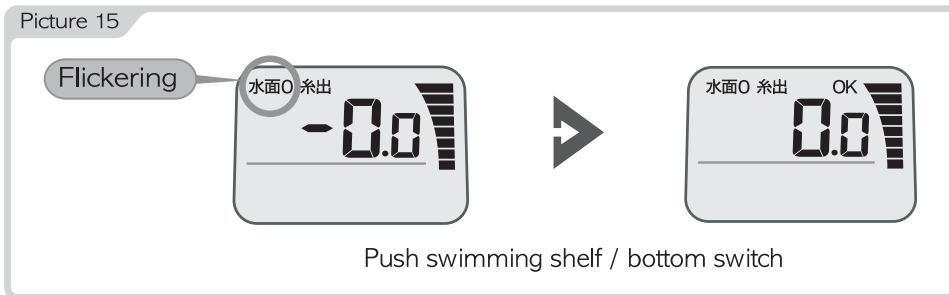


## 8

## Operation methods

Operation sequence ② : Push the sides of boat stop switch. That point is "0"s position.  
 "the surface of water 0" is flickering and lighting and finally lighting "OK"

\* "The surface of water 0", "OK" is automatically disappeared because main counter is over 10.0.



### Attention

❶ "The surface of water 0" function is different from "the sides of boat stop point."

## Operation methods

### 3 The function of delivery fishing line

- In order to drop, this helps a motor rotation.
  - \* When you connect a power supply, there is a "ON" which works the function of delivery fishing line.

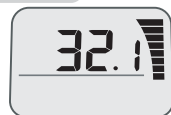
#### Operating explanation

- ① When you input your equipment, the motor automatically rotates in the event that the surface of water is over 10M than the sides of boat.
- ② In the event that the rotation of spool is stopped or backlash, you must stop the rotation of motor (protection of backlash)
- ③ As spool rotates to the direction that emitted again repeatedly, the motor resumes the rotation.
- ④ The rotation of motor suspends in front of 5M of the surface of water which is established.

#### How to off the function of delivery of fishing line

- (Push the delivery button. The delivery mark in the screen is disappeared. (refer to picture 16)
  - \* In the event that you want "ON", push the delivery fishing line button. The screen is lighting. (refer to picture 17)

Picture 16



Picture 17



#### Attention

- ① Time lag can happen in stop or circumstance that turning of motor should suspend by backlash of spool turning.
- ② When motor is rotating in line release "ON", if do clutch by "ON", there is occasion that wind line.

## 8

## Operation methods

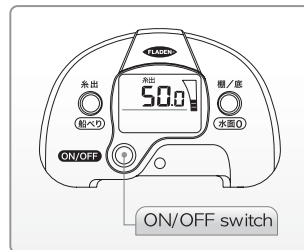
### 4 Automatic winding with Electric power and how to change speed

- The speed control by movement of motor and speed lever

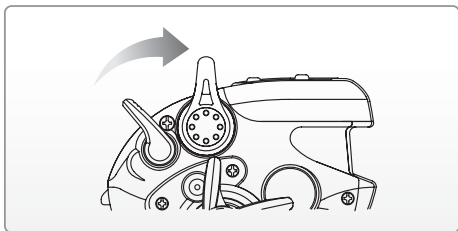
Operation sequence ① : push the ON/OFF button  
(if you push again, it is stopped)

- \* It starts winding fishing line the same as speed meter.

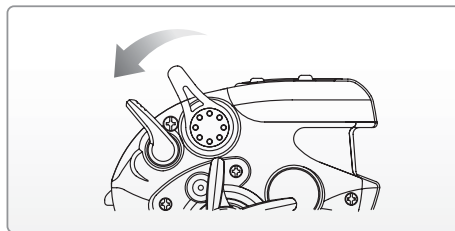
Operation sequence ② : it's possible to control speed by moving  
speed lever in forward / backward.



- \* If push speed lever to fore-end,  
the speed that wind fishing line festinates.



- \* If pull the lever inside,  
the speed that wind fishing line is slow.



### Attention

- ① After the sides of boat stopping, the ON/OFF switch is not worked for automatic winding.

## Operation methods

### 5 Shelf mode

- Remember fish's swimming depth of water and it notifies you by alarming.

Operation sequence ① : push button when the equipment is on the your wanted depth of water. the shelf adjustment is completed.

- \* The main counter is displayed on the serve counter. (refer to picture 18)
- \* After this, it notifies you by alarming before shelf 5M.

#### Remember of automatic shelf

- After collecting a equipment, the occasion that set up the point that fish was caught.

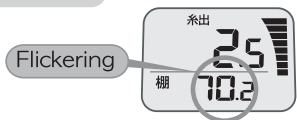
Operation sequence ① : Withdraw equipment

- \* If main counter's indication proceeds less than 10.0, the surface of water flickers in serve counter. (refer to picture 19)

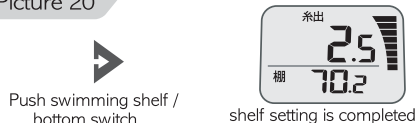
(Flickered depth of water is the depth of water which is suspended more than minimum 5 seconds in the bottom)

Operation sequence ② : when the depth of water is flickering, if you push the sides of boat stop switch, it is lighten and setting up shelf.

Picture 19



Picture 20



Picture 18



Push swimming shelf / bottom switch



swimming shelf / bottom setting is completed

- \* Occasion that emit equipment more than 10M with do not press switch during lighting

- The depth of water which is established before if was established before is displayed.
- it is deleted if do not establish the shelf.

## Operation methods

### Off the shelf mode

- If you push the sides of boat stop button over 2 seconds, it is changed low mode. (refer to picture 21)
  - \* The depth of water is completed a shelf setting up is disappeared.
  - \* In the event that you want to change shelf mode again, push the sides of boat stop button more than 2 seconds.

Picture 21



Shelf mode



Push the switch  
for moer than  
2 seconds.



Bottom mode



### Attention.

- ❶ It is impossible to set up self below 10M.
- ❷ It is impossible to off the shelf set during the rotation of motor.

## Operation methods

### 6 The low mode

- It displays from bottom to equipment's distance.

In the event that there is no shelf / low signal on the serve counter

Operation sequence ① : push the sides of boat stop button (refer to picture 22)

- \* The shelf is displayed on the main counter.  
(If the main counter is over 10M, it's set up shelf)

Operation sequence ② : push again the sides of boat stop button over 2 seconds.

- \* Low 0.0 is displayed on the serve counter. (refer to picture 23)

Picture 22



Picture 23



Push the switch  
for moer than  
2 seconds.



In the event that shelf is displayed on the serve counter

Operation sequence ① : push the sides of boat stop button more than 2 seconds.

- \* Serve counter is changed from shelf indication to low 0.0 indication (refer to picture 24)

Picture 24



Push the switch  
for moer than  
2 seconds.



## Operation methods

### Off the shelf MODE

Operation sequence ① : do fishing line as do not hang after does equipment as bottom and serves some reel to...

\* Distance is displayed as wind fishing line that hang in serve counter. (refer to picture 25)

Operation sequence ② : push the sides of boat stop button.

\* It changed the (low 0.0) in the serve counter. (refer to picture 26)

Picture 25



Recover the  
drwped line



Push swimming shelf /  
bottom switch



## Operation methods

### 7 Correction of original line cut

- Correction occasion fishing line data that original line is cut by taken under swellfish etc. is possible

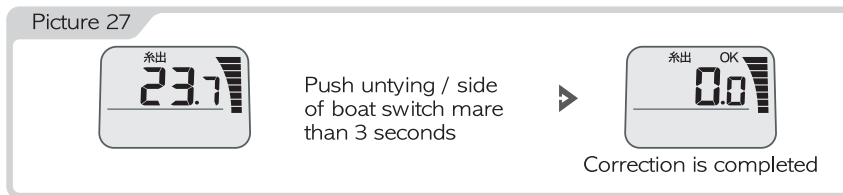
\* Correction of original line cut is tip in case original line more than 10M is cut.

Operation sequence ① : Withdraw the original line and connect equipment again.

Operation sequence ② : Push the shooting out switch more than 3 minutes.(correction completion)

\* As alarm rings, main counter is displayed by 0.0 (refer to picture 27)

\* It is displayed OK in the serve counter.



\* After correction of original line cut, please reset up the sides of boat stop point and surface of water "0".

\* If "ON/OFF" switch is pushed for more than 3seconds at the position "0.0" of the main counter.



### Attention

- ❶ After correction of original line cut, when do not establish the sides of boat stop point, if input equipment, side of a boat stop point becomes 5M.

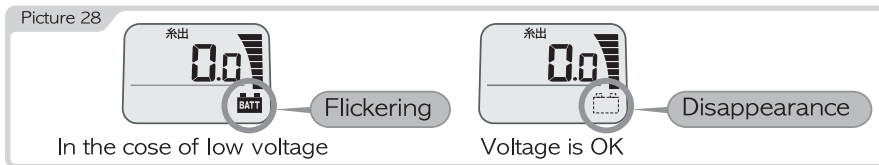


## 9

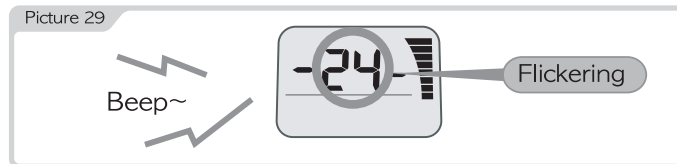
# Safety function

## 1 Check battery

- When you connect power supply, check the low pressure of battery.
  - ① If the electric pressure is ok, the flickering battery mark is disappeared.
  - ② In the event that the electric pressure is low, the battery marks is lighted.
- exchange battery or recharge it (refer to picture 28)



- ③ Power supply appears warning sign on screen with more high-pitched occasion alarm than reasonable extent of reel.



## 9

## Safety function

### 2 Memory back up

- When you are doing fishing, you are relieved even though unexpectedly the code or clip is pulled out.  
The depth of water or the other data is kept and memorized for 15 minutes.



### Attention

- The surface of water 0 is a different function from "the sides of boat stop point"

### 3 Over load break

- When overload takes to motor, brake operates and halt motor for motor protection.
- Although it is returned if use ON/OFF switch, speed is Lo-3 by automatically establish.  
It's possible to change the speed by using the speed lever..



### Attention

- The surface of water 0's point is a different function from "the neighboring stop point"
- Please don't release and recover the line at the position of power off.  
The counter error may occur.
- Please perform the recovery in the relieved load.

## 10

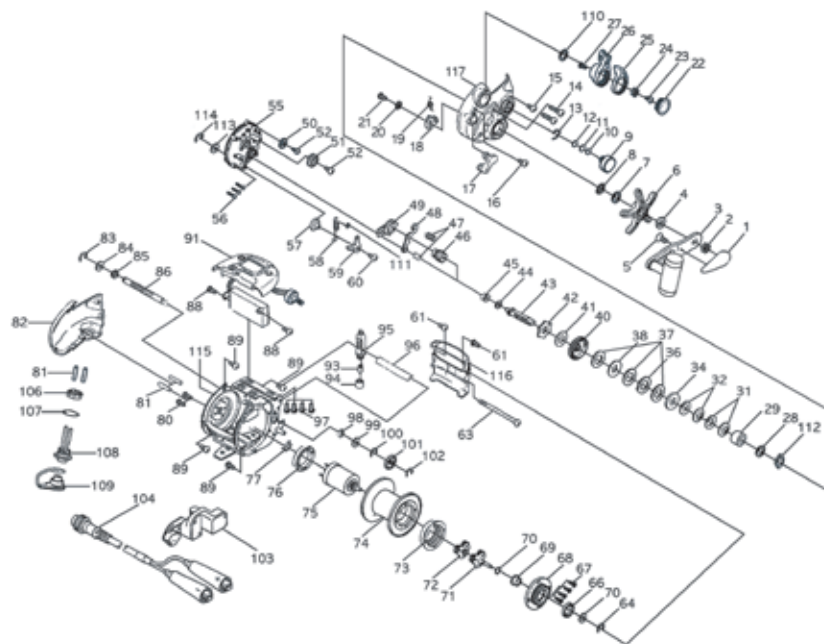
## When fault is doubtful

Please confirm the below list, before asking for inquiry or repair.

Symptoms	Expected factors	Confirmation & Handling Method
"Visual display is not appeared."	<ul style="list-style-type: none"> <li>● In the case of connecting.</li> <li>● Disconnection of power supply..</li> <li>● Battery's electric pressure is not enough.</li> </ul>	<ul style="list-style-type: none"> <li>● Connect correctly.</li> <li>● Talk with the shop.</li> <li>● Charge it or check another battery.</li> </ul>
"Counter display's error is big."	<ul style="list-style-type: none"> <li>● Error in setting up of fishing line.</li> <li>● Error in growing longer fishing line.</li> </ul>	<ul style="list-style-type: none"> <li>● Input fishing line again.</li> <li>● Input fishing line again.</li> </ul>
"Automatic winding does not work."	<ul style="list-style-type: none"> <li>● When the display is set 0.0.</li> <li>● shortage of battery's capacity.</li> <li>● When the connect cable is rusted.</li> <li>● When the ship's power supply is used. (wiring problem or dropping electric pressure)</li> </ul>	<ul style="list-style-type: none"> <li>● Please display the surface of water over the sides of boat distance.</li> <li>● Charge it or use another battery.</li> <li>● After remove the rust, please check it.</li> <li>● Exchange an exclusive battery and please check it..</li> </ul>

if you find the abnormal symptom after you check the above lists, please prepare the details about the defectives and ask the repair to the shop where you've bought the reel.

## Part list





High Technology Electric Reel

Key No.	Parts Name	Key No.	Parts Name	Key No.	Parts Name	Key No.	Parts Name
1	HANDLE NUT CAP	27	TAP SCREW	59	ANT CLAW		
2	NUT	28	WASHER	60	SCREW	91	CONTROL BOX ASSY
3	HANDLE ASSY	29	COLLAR	61	SCREW	93	LEVEL WIND PIN
4	WASHER	31	SPRING WASHER	63	SCREW	94	NUT
5	TAP SCREW	32	DRAG SPRING	64	RETAINER	95	LEVEL WIND ASSY
6	STAR DRAG	34	WASHER-D2	66	BALL BEARING	96	PIPE
7	WASHER	36	WASHER-A	67	SCREW	97	TAP SCREW
8	CLICK HOLDER ASSY	37	WASHER	68	SPOOL COVER	99	WASHER
9	TENSION KNOB	38	WASHER-D1	69	BEARING	100	RETAINER
10	WASHER	40	DRIVE GEAR	70	WASHER	101	TRAVERSE GEAR
11	WASHER	41	WASHER	71	GEAR SHAFT ASSY	102	RETAINER
12	WASHER	42	RATCHET ASSY	72	SUN GEAR ASSY	103	COUNTER ASSY
13	LEAF SPRING	43	GEAR METAL	73	INTERNAL GEAR	104	POWER CODE ASSY
14	SCREW	44	WASHER	74	SPOOL ASSY	106	NUT
15	SCREW	45	BEARING	75	MOTOR ASSY	107	SPRING WASHER
16	SCREW	46	PINION	76	BALL BEARING	108	CONNECTOR ASSY
17	CLUTCH LEVER	47	COIL SPRING	77	LINE STOPPER	109	WATER CAP
18	CLUTCH LEVER CAM ASSY	48	CLUTCH BAR	80	SCREW	110	WASHER
19	CAM SPRING	49	CLUTCH CAM	81	HEAT SHRINKABLE TUBE	111	O-RING
20	TOOTH WASHER	50	JOINT GEAR-A	82	LEFT COVER PLATE	112	BUSH
21	SCREW	51	MAGNET ASSY	83	RETAINER	113	WASHER
22	LEVER CAP	52	SCREW	84	WASHER	114	RETAINER
23	TAP SCREW	55	FRAME COVER	85	BUSH	115	FRAME ASSY
24	NUT	56	SCREW	86	WORM SHAFT	116	FRONT COVER
25	SPEED LEVER-B	57	CLAW COLLAR	88	SCREW	117	RIGHT COVER PLATE
26	SPEED LEVER-A	58	CLAW SPRING	89	TAP SCREW		

# MEMO

A large, empty rectangular box with rounded corners, outlined in a dark gray color. This box is intended for the main content of the memo.

# MEMO

A large, empty rectangular box with rounded corners, outlined in a dark gray color. This box is intended for the main content of the memo.



Fladen Fishing AB,  
Honungsgatan 5, 432 95 Varberg  
Tel 0340 - 62 00 05  
[info@fladenfishing.se](mailto:info@fladenfishing.se), [www.fladenfishing.se](http://www.fladenfishing.se)