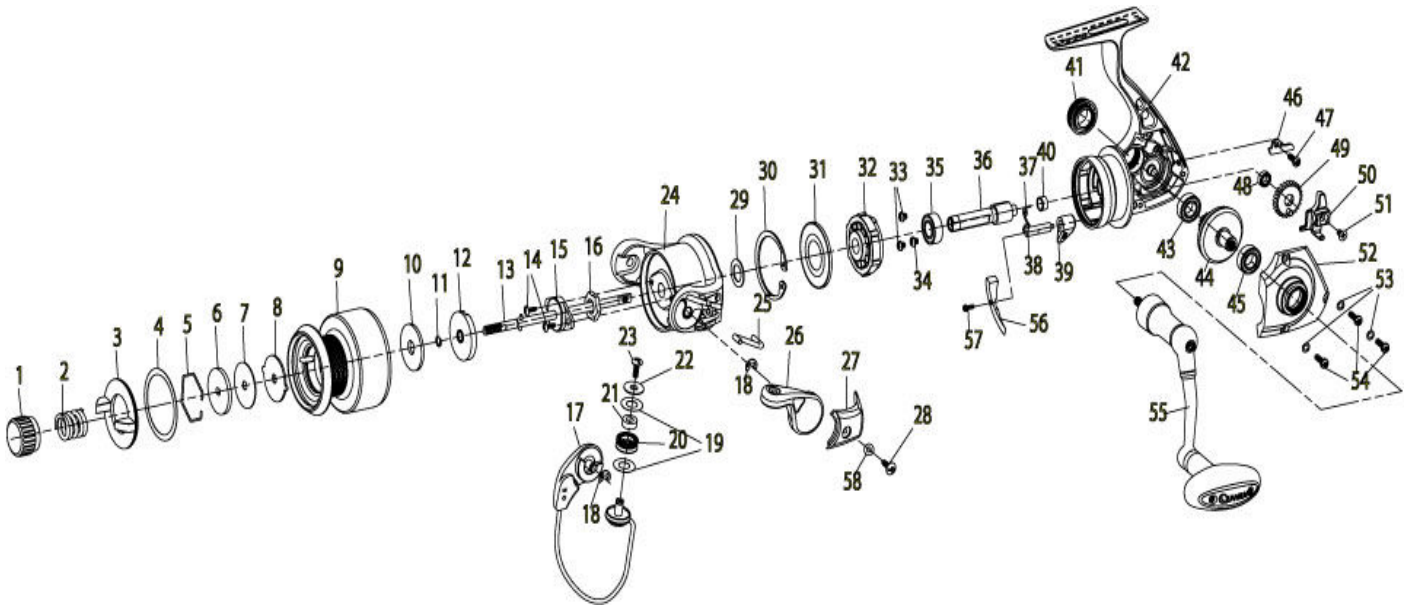


# FIN-NOR<sup>®</sup>

LEGENDARY TACKLE SINCE 1933

## MEGALite ML3000

For parts and service  
 call toll free: 1-888-404-1119  
[www.mikesreelrepair.com](http://www.mikesreelrepair.com)



### MEGALITE SPINNING REEL Part List

Key #	Description	Part No.		Key #	Description	Part No.	
		ML3000				ML3000	
1	Drag Knob	XP032-01		30	Clutch Retainer Ring	TK060-01	
2	Drag Spring	XP043-01		31	Clutch Seal Plate	WP166-01	
3	Drag Guard	XP236-01		32	Clutch Unit	XP463-01	
4	Drag Guard Washer	XP109-01		33	Pinion Bearing Screw "A"	TK057-01	
5	Retainer Ring	RQ038-01		34	Pinion Bearing Screw "B"	TK057-11	
6	Drag Washer "D"	SQ080-02		35	Pinion Ball Bearing	UK028-01	
7	Drag Washer "B"	RQ033-11		36	Pinion	SQ011-01	
8	Drag Washer "A"	RQ081-01		37	Stopper Cam Spring	TK089-01	
9	Spool Assembly	XP321-01		38	Stopper Cam	TK090-01	
10	Drag Washer	WP081-01		39	Stopper Lever	RQ059-02	
11	Retainer Clip	TK034-01		40	Pinion Bushing	SQ141-01	
12	Drag Click Assembly	WP459-01		41	Handle Screw Assembly	BG354-01	
13	Main Shaft Assembly	XP315-01		42	Body Assembly	XP301-01	
14	Rotor Nut Lock Screw	RQ094-01		43	Body Ball Bearing	BL157-01	
15	Main Shaft Bushing	SQ214-01		44	Drive Gear Assembly	AT312-01	
16	Rotor Nut	TH006-01		45	Side Cover Ball Bearing	BL157-01	
17	Bail Assembly	TQ347-11		46	O/S Slider Retainer	XP078-01	
18	E-Clip	GH034-01		47	O/S Slider Retainer Screw	SK057-11	
19	Line Roller Washer	DH102-01		48	O/S Gear Ball Bearing	EH158-01	
20	Line Roller	DH004-01		49	O/S Gear	TQ053-01	
21	Line Roller Balling Bearing	GH202-01		50	O/S Slider	TK025-01	
22	Line Roller Collar	CH102-01		51	Slider Screw	RQ100-01	
23	Line Roller Screw	AQ108-01		52	Side Cover	XP023-01	
24	Rotor Assembly	TQ309-11		53	Side Cover Screw Washer	RQ142-01	
25	Kick Lever	TQ019-01		54	Side Cover Screw	RQ057-01	
26	Arm Lever Assembly	SQ307-11		55	Handle Assembly	XP318-01	
27	Arm Lever Cover	TQ087-11		56	Trip Bumper	XP119-01	
28	Arm Lever Cover Screw	GU077-02		57	Trip Bumper Screw	XP057-01	
29	Pinion Washer	AT110-01		58	Arm Lever Cover Washer	SQ142-01	