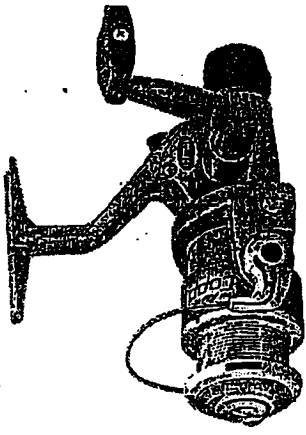


MITCHELL



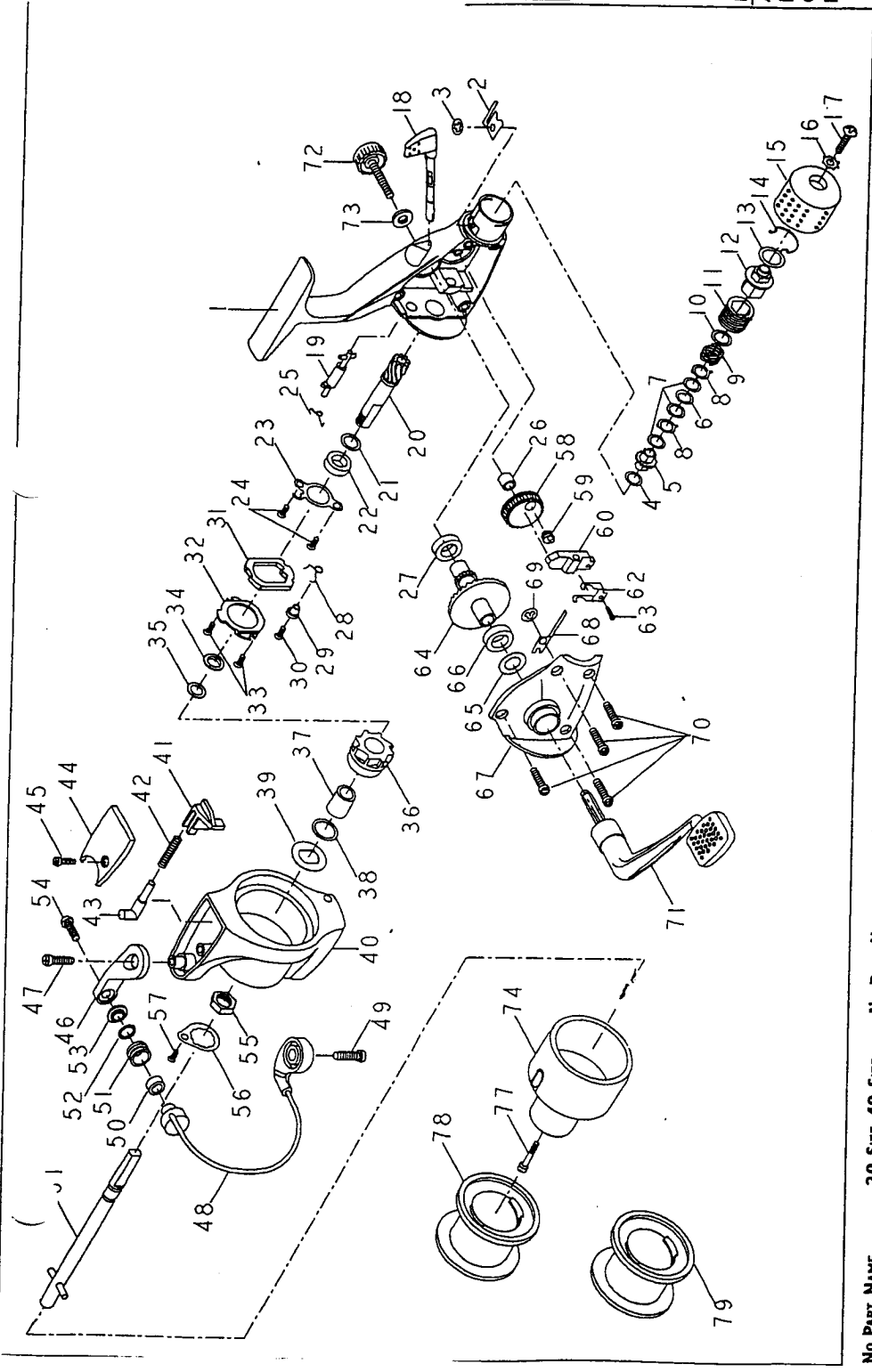
Copperhead

Model	MCH20 IAR	MCH40 IAR
Action	Light	Medium
Bearings	5 (4 + IAR)	5 (4 + IAR)
Gear Ratio	5.1:1	5.6:1
Line Cap.	6 lb./145 yds.	8 lb./200 yds.

Modèle	MCH20 IAR	MCH40 IAR
Action	Légère	Moyenne
Roulements	5 (4 + IAR)	5 (4 + IAR)
Rapport d'engrenage	5,1:1	5,6:1
Caractéristiques de la ligne	200m/0,18	200m/0,24

PURE FISHING
1900 18th Street
Spirt Lake, IA 51360-1099
purefishing.com

PRINTED IN CHINA



No. PART NAME	20 SIZE	40 SIZE	No. PART NAME	20 SIZE	40 SIZE	No. PART NAME	20 SIZE	40 SIZE
1 Body	1071030	1071031	43 Bail Trip Piston	1066251	1071061	64 Drive Gear	1066278	1066279
2 Drag Click Spring	1071032	-	44 Bail Arm Cover	1066252	1066253	65 Drive Gear Washer	1066281	-
3 Retaining Ring	1071033	-	45 Cover Screw	1066254	-	66 Drive Gear Bearing	1066280	-
4 Front Drag Washer	1071034	1071035	46 Arm Lever	1066255	1066256	67 Cover Plate	1078817	1078818
5 Drag Stem	1071036	1071037	47 Arm Lever Screw	1066258	1066259	68 Drag Click Spring	1071089	1071090
6 Keyed Drag Washer	1071038	1071039	48 Bail Assy	1066257	-	69 Locking Washer/Screw	1071091	1071092
7 Drag Washer (3)	1071070	1071071	49 Bracket Screw	1066260	-	70 Cover Plate Screw	888-9412	-
8 Eared Drag Washer (2)	1071072	1071073	50 Line Roller Ball Bearing 1078815	1066260	-	71 Crank Assy	1071093	1077925
9 Drag Spring	1071074	1071075	51 Line Roller	1066263	-	72 Handle Lock Screw Assy	1066287	-
10 Fmt Drag Spring Washer	1071076	1071077	52 Line Roller Washer	1066264	-	73 Handle Washer	1066288	-
11 Drag Sleeve	1071078	1071079	53 Line Roller Cover	1066264	-	74 Spool Hub	1066290	1066291
12 Drag Insert	1071080	1071081	54 Line Roller Screw	1066265	-	-	-	-
13 Drag Spring Washer	1071082	1071083	55 Rotor Nut	1066266	-	-	-	-
14 Drag Insert Retainer	1071084	1071085	56 Rotor Nut Lock	1066267	1071058	77 Main Shaft Screw	850-8800	-
15 Drag Knob	1071086	1071087	57 Rotor Nut Lock Screw	1066268	-	78 Spool	888-9351	888-9352
16 Lock Washer	831-1400	-	58 Oscillation Gear	1066269	1066270	79 Spare Spool	888-9353	888-9354
17 Screw	889-3800	-	59 Transfer Gear	1066271	1066272	-	-	-
18 A/R Lever	1066274	1071088	60 Oscillation Slider	889-2500	892-8800	-	-	-
19 A/R Stem	1066275	1071042	61 Main Shaft Assy	888-9357	888-9358	-	-	-
20 Pinion	1066276	1066277	62 Main Shaft Keeper	889-2400	892-8900	-	-	-
21 Washer	1066278	-	63 O/S Holder Screw	850-1900	-	-	-	-

3-1