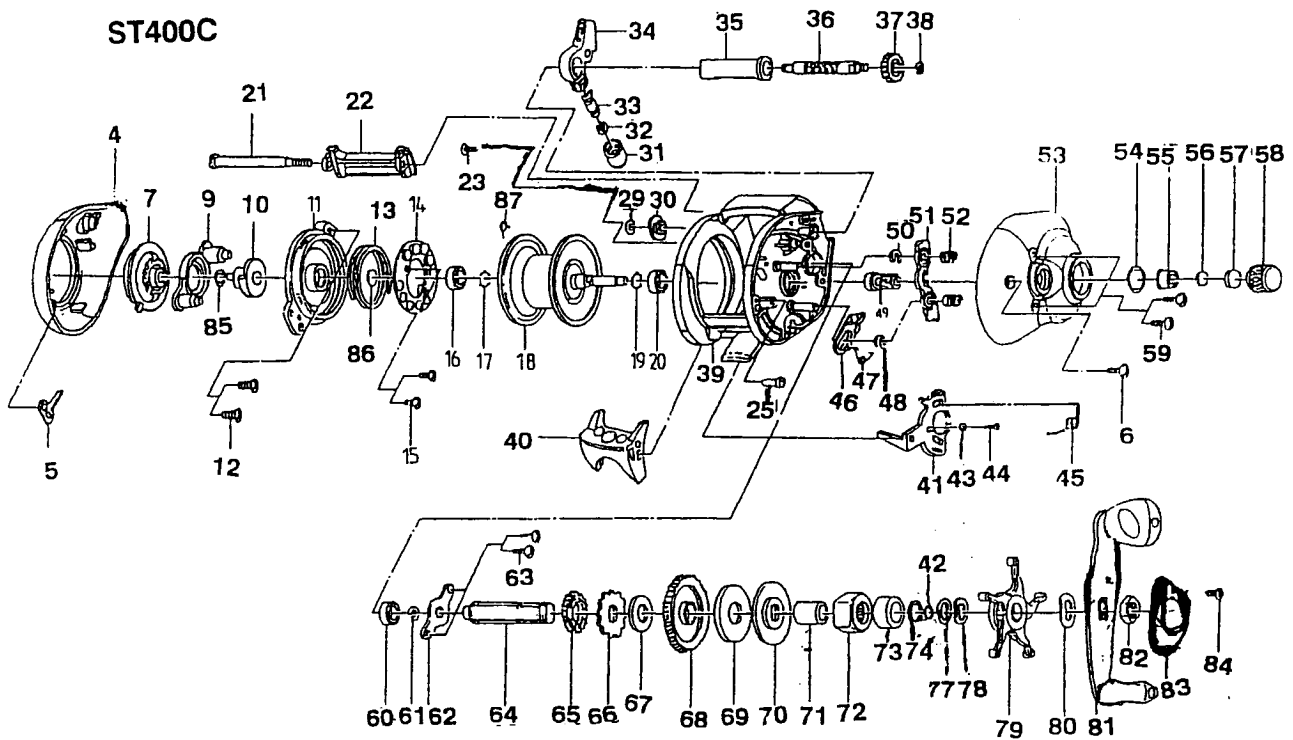


ST400C



ITEM	DESCRIPTION	PART#	ITEM	DESCRIPTION	PART#	ITEM	DESCRIPTION	PART#
4	left side plate	1090740	37	Oscillate pinion gear	1090779	65	Oscillated drive gear	1090717
5	Click claw	1090742	38	Oscillate Pinan gear retainer	1090780	66	Trip catcher	1090718
6	tap screw	1090743	39	Frame	1090781	67	trip catcher washer	1090809
7	Control Dial	1090744	40	Thumb Bar	1090782	68	Drive gear	1090810
9	Slider cam A	1090745	41	Release slider	1090783	69	Drag Disc	1090811
10	Slider cam B	1090746	42	Washer	1090784	70	Drag "D" washer	1090812
11	Spool Cover	1090747	43	Release slider guide washer	1090785	71	One way bearing sleeve	1090813
12	Spool cover screw	1090748	44	release slider guide screw	1090786	72	One way bearing sleeve	1090814
13	Coil spring	1090759	45	Release Slider Spring	1090787	73	Crank shaft ball bearing	1090815
14	Magnet plate assembly	1090760	46	Kick lever	1090788	74	crank shaft washer	1090816
15	Magnet Plate screw	1090761	47	Kick Lever Spring	1090789	77	Spring "D" Washer	1090817
16	Ball bearing	1090762	48	Kick lever retainer	1090790	78	Spring "D" Washer	1090818
17	Ring	1090763	49	Pinion Gear Assembly	1090791	79	Star drag assembly	1090819
18	Spool assembly	1090764	50	Pinion yoke shaft retainer	1090792	80	Handle washer	1090821
19	Push Nut	1090765	51	Pinion Yoke	1090793	81	Handle assembly	1090822
20	Ball Bearing	1090766	52	Pinion Yoke spring	1090794	82	Handle nut	1090823
21	Stablizer Bar	1090767	53	Right side plate	1090795	83	Handle nut cap	1090824
22	Front support	1090768	54	O-ring	1090797	84	Handle nut cap screw	1090826
23	Locking screw	1090769	55	Tension Knobe Bearing	1090798	85	O-ring	1090827
25	Bush	1090770	56	Spool tension Washer A	1090799	86	Spool tension washer B	1090828
29	Worm shaft retainer	1090771	57	Spool cushion washer	1090800	87	Locking spring	1090829
30	Worm shaft bushing	1090772	58	Spool tension knob	1090801			
31	Pawl cap screw	1090773	59	Right side plate screw	1090803			
32	Line guide paw washer	1090774	60	Crank Shaft lower bearing	1090711			
33	Line guide paw	1090775	61	Crank shaft retainer	1090713			
34	line guide camor assembly	1090776	62	Crank shaft Bearing plate	1090714			
35	Worm shaft guide	1090777	63	Crank shaft bearing plate screw	1090715			
36	worm shaft	1090778	64	Crank Shaft	1090716			

(61)