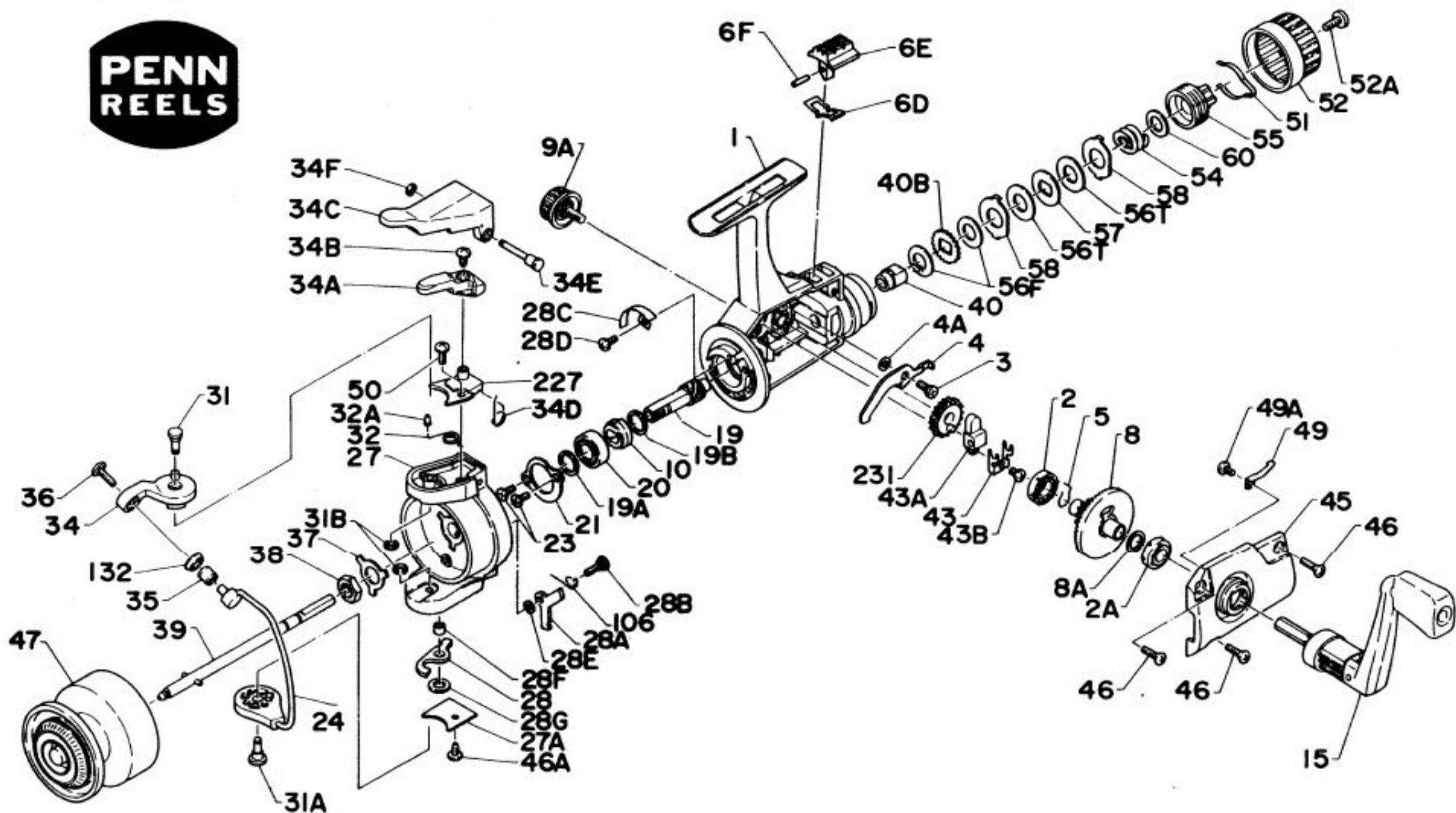


# PARTS FOR MODEL 220GR



Penn Reel Parts list for:

### KEY PART

NO	NO.	DESCRIPTION
1	1-220	HOUSING
2A	2A-230	COVER BUSHING
3	3-230	DOG MOUNTING SCREW
4	4-220	DOG
4A	4A-240	DOG SHIM
5	5-230	DOG SPRING
6D	6D-240	ECCENTRIC SPRING
6E	6E-220	ECCENTRIC LEVER
6F	6F-240	ECCENTRIC LEVER MTG PIN
8	8-220	MAIN GEAR
8A	8A-230	MAIN GEAR SHIM
9A	9A-240	STANDARD DRIVE SCREW
10	10-230	ANTI-REVERSE RATCHET
15	15-230	HANDLE
19	19-220	PINION GEAR
19A	19A-240	ROTOR WASHER
19B	19B-230	PINION GEAR SPACER
20	20-230	BALL BEARING
21	21-220	BEARING COVER
23	23-220	BEARING COVER SCREW
24	24-220	BAIL
27	27-220	ROTOR CUP
27A	27A-220	ROTOR COVER
28	28-220	TRIP LEVER
28A	28A-220	CAM LEVER
28B	28B-240	CAM LEVER MTG SCREW
28C	28C-240	TRIP CAM
28D	28D-240	TRIP CAM MTG. SCREW
28E	28E-230	CAM LEVER SHIM
28F	28F-230	TRIP LEVER BUSHING
28G	28G-240	TRIP LEVER SHIM
31	31-240	BAIL ARM PIN
31A	31A-230	BAIL WIRE MTG. PIN
31B	31B-240	RETAINING RING
32	32-220	BAIL SPRING
32A	32A-240	BAIL SPRING BUSHING
34	34-230	BAIL ARM

Model: 220GR

### KEY PART

NO	NO.	DESCRIPTION
34A	34A-230	BAIL ARM LEVER
34B	34B-240	BAIL ARM LEVER MTG. SCREW
34C	34C-220	TRIGGER
34D	34D-240	TRIGGER SPRING
34E	34E-230	TRIGGER MTG. PIN
34F	34F-240	TRIGGER RETAINING RING
35	35-230	LINE ROLLER
36	36-230	ROLLER MTG. SCREW
37	37-230	ROTOR CUP WASHER
38	38-230	ROTOR CUP NUT
39	39-220	SPOOL SHAFT
40	40-230	DRAG SLEEVE
40B	40B-240	CLICK RATCHET
43	43-230	CROSSWIND ARM
43A	43A-230	CROSSWIND BLOCK
43B	43B-240	CROSSWIND ARM SCREW
45	45-220	HOUSING COVER
46	46-240	HOUSING COVER SCREW
46A	46A-240	ROTOR CUP COVER SCREW
47	47-220	SPOOL
49	49-240	CLICK SPRING
49A	49A-240	CLICK SPRING SCREW
50	50-240	BAIL SPRING COVER SCREW
51	51-230	DRAG KNOB NUT RET. SCREW
52	52-230	DRAG KNOB
52A	52A-230	DRAG KNOB MTG. SCREW
54	54-220	DRAG KNOB SPRING
55	55-230	DRAG KNOB NUT
56F	56F-230	DRAG WASHER FIBRE
56T	56T-230	DRAG WASHER (TEFLON)
57	57-230	DRAG WASHER (KEYED)
58	58-230	DRAG WASHER EARED
60	60-230	THRUST WASHER
106	106-240	CAM LEVER SPRING
132	132-230	ROLLER WASHER
227	227-220	BAIL SPRING COVER
231	231-220	CROSSWIND GEAR