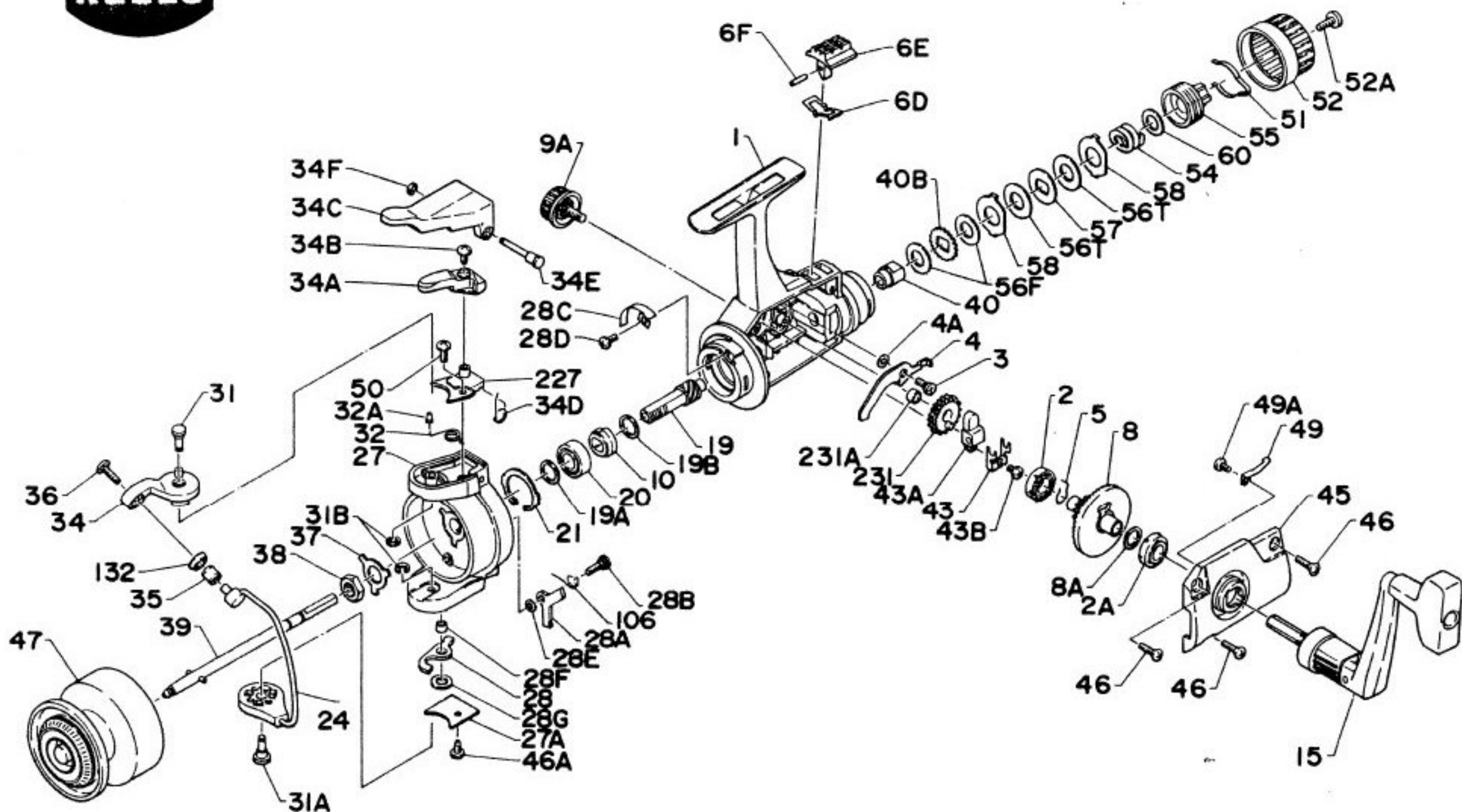




PARTS FOR MODEL 240GR



Penn Reel Parts list for:

KEY PART

NO	NO.	DESCRIPTION
1	1-240	HOUSING
2A	2A-240	COVER BUSHING
3	3-240	DOG MOUNTING SCREW
4	4-240	DOG
4A	4A-240	DOG SHIM
5	5-240	DOG SPRING
6D	6D-240	ECCENTRIC SPRING
6E	6E-240	ECCENTRIC LEVER
6F	6F-240	ECCENTRIC LEVER MTG PIN
8	8-240	MAIN GEAR
8A	8A-240	MAIN GEAR SHIM
9A	9A-240	STANDARD DRIVE SCREW
10	10-240	ANTI-REVERSE RATCHET
15	15-240	HANDLE
19	19-240	PINION GEAR
19A	19A-240	ROTOR WASHER
19B	19B-240	PINION GEAR SPACER
20	20-240	BALL BEARING
21	21-240	BEARING COVER
24	24-240	BAIL
27	27-240	ROTOR CUP
27A	27A-240	ROTOR COVER
28	28-240	TRIP LEVER
28A	28A-240	CAM LEVER
28B	28B-240	CAM LEVER MTG SCREW
28C	28C-240	TRIP CAM
28D	28D-240	TRIP CAM MTG. SCREW
28E	28E-230	CAM LEVER SHIM
28F	28F-240	TRIP LEVER BUSHING
28G	28G-230	TRIP LEVER SHIM
31	31-240	BAIL ARM PIN
31A	31A-240	BAIL WIRE MTG. PIN
31B	31B-240	RETAINING RING
32	32-240	BAIL SPRING
32A	32A-240	BAIL SPRING BUSHING
34	34-240	BAIL ARM
34A	34A-240	BAIL ARM LEVER

Model: 240GR

KEY PART

NO	NO.	DESCRIPTION
34B	34B-240	BAIL ARM LEVER MTG. SCREW
34C	34C-240	TRIGGER
34D	34D-240	TRIGGER SPRING
34E	34E-240	TRIGGER MTG. PIN
34F	34F-240	TRIGGER RETAINING RING
35	35-240	LINE ROLLER
36	36-240	ROLLER MTG. SCREW
37	37-240	ROTOR CUP WASHER
38	38-240	ROTOR CUP NUT
39	39-240	SPOOL SHAFT
40	40-240	DRAG SLEEVE
40B	40B-240	CLICK RATCHET
43	43-240	CROSSWIND ARM
43A	43A-240	CROSSWIND BLOCK
43B	43B-240	CROSSWIND ARM SCREW
45	45-240	HOUSING COVER
46	46-240	HOUSING COVER SCREW
46A	46A-240	ROTOR CUP COVER
47	47-240	SPOOL
49	49-240	CLICK SPRING
49A	49A-240	CLICK SPRING SCREW
50	50-240	DRAG KNOB NUT RET. SCREW
51	51-240	DRAG KNOB NUT RET. SCREW
52	52-240	DRAG KNOB
52A	52A-240	DRAG KNOB MTG. SCREW
54	54-240	DRAG KNOB SPRING
55	55-240	DRAG KNOB NUT
56F	56F-240	DRAG WASHER FIBRE
56T	56T-240	DRAG WASHER (TEFLON)
57	57-240	DRAG WASHER (KEYED)
58	58-240	DRAG WASHER EARED
60	60-240	THRUST WASHER
106	106-240	CAM LEVER SPRING
132	132-240	ROLLER WASHER
227	227-240	BAIL SPRING COVER
231	231-240	CROSSWIND GEAR
231A	231A-240	CROSSWIND GEAR BUSHING