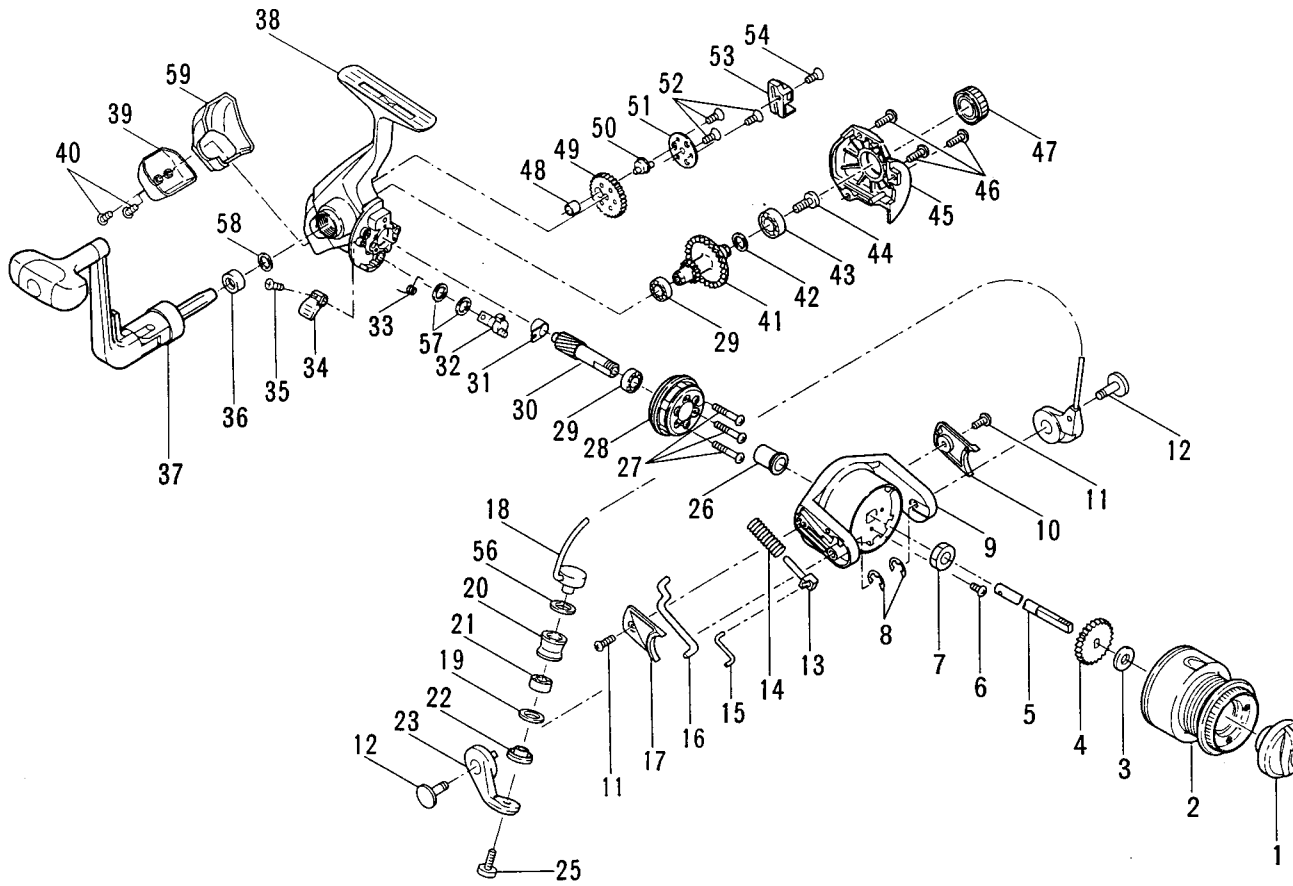




MODEL PRION 1200

PARTS LIST FOR MODEL 1200



KEY

| KEY NO. | PART NO. | DESCRIPTION |
|---------|----------|------------------------------|
| 1 | 52-900 | Drag Knob Asm. |
| 2 | 47-1200 | Spool Assembly |
| 3 | 60-1000 | Thrust Washer |
| 4 | 40B-1000 | Click Ratchet |
| 5 | 39-900 | Spool Shaft |
| 6 | 38A-900 | Rotor Nut Lock Screw |
| 7 | 38-1000 | Rotor Nut |
| 8 | 37-900 | E-Ring (2) |
| 9 | 27-1200 | Rotor |
| 10 | 227-900 | Rotor Cover 'B' |
| 11 | 50-1000 | Cover Screw (2) |
| 12 | 31A-900 | Trip Arm Screw (2) |
| 13 | 34B-1000 | Pivot Shaft |
| 14 | 34C-900 | Pivot Spring |
| 15 | 34A-1500 | Pivot Arm |
| 16 | 34D-1200 | Pivot Arm Kick Lever |
| 17 | 27A-1200 | Rotor Cover 'A' |
| 18 | 24-1200 | Bail Wire Assembly |
| 19 | 132-900 | Washer |
| 20 | 35-900 | Line Roller |
| 21 | 35A-900 | Ball Bearing |
| 22 | 35B-900 | Collar |
| 23 | 34-900 | Bail Arm |
| 25 | 36-900 | Line Roller Screw |
| 26 | 19A-900 | Spacer |
| 27 | 20A-900 | Screw (3) |
| 28 | 20-900 | One Way Clutch |
| 29 | 20B-900 | Ball Bearing (2) |
| 30 | 19-900 | Pinion Gear |
| 31 | 19B-900 | Rear Pinion Bushing |
| 32 | 28-900 | Anti-Reverse Lever Cam |
| 33 | 28B-900 | Anti-Reverse Lever Spring |
| 34 | 28A-900 | Anti-Reverse Lever |
| 35 | 6F-900 | Lever Mtg. Screw |
| 36 | 15A-900 | Handle Spacer |
| 37 | 15-900 | Handle Assembly |
| 38 | 1-900 | Main Body |
| 39 | 1A-900 | Housing Protector |
| 40 | 1C-900 | Housing Protector Screws (2) |
| 41 | 8-900 | Main Gear |
| 42 | 8A-900 | Main Gear Shim |
| 43 | 55-895 | Ball Bearing |
| 44 | 9A-1000 | Handle Retaining Screw |
| 45 | 2A-900 | Side Plate |
| 46 | 46-1000 | Screw (3) |
| 47 | 233-900 | Bearing Cover |
| 48 | 231A-900 | Crosswind Cam Collar |
| 49 | 231-900 | Crosswind Gear |
| 50 | 231B-900 | Crosswind Cam |
| 51 | 231C-900 | Crosswind Pressure Plate |
| 52 | 231D-900 | Crosswind Gear Screw (3) |
| 53 | 43-900 | Crosswind Block |
| 54 | 44-900 | Crosswind Block Screw |
| 56 | 8A-1500 | Upper Roller Washer |
| 57 | 28C-900 | Washer (2) |
| 58 | 15B-900 | Washer |
| 59 | 1B-900 | Housing Cover |