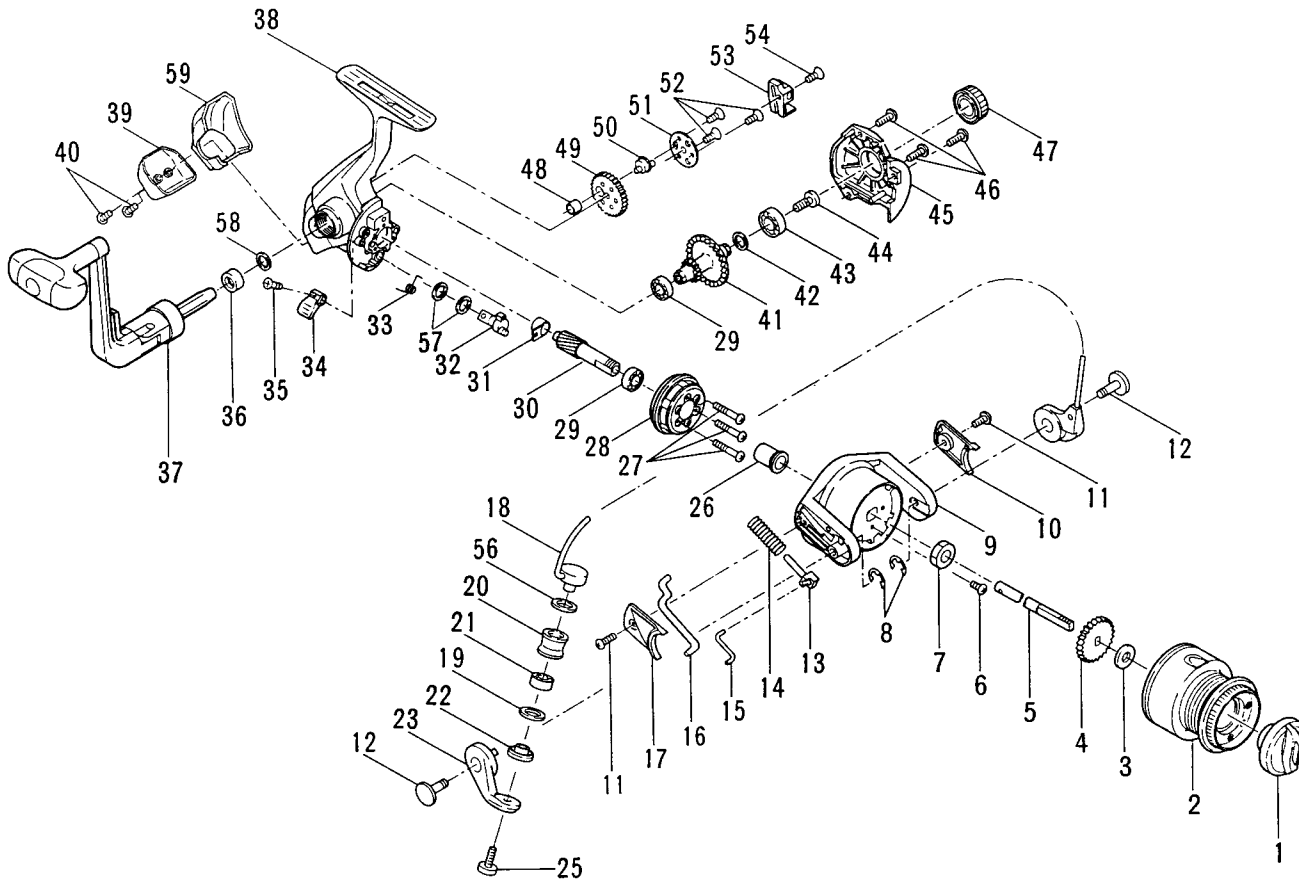




MODEL PRION 900



PARTS LIST FOR MODEL 900

KEY NO.	PART NO.	DESCRIPTION
1	52-900	Drag Knob Asm.
2	47-900	Spool Assembly
3	60-1000	Thrust Washer
4	40B-1000	Click Ratchet
5	39-900	Spool Shaft
6	38A-900	Rotor Nut Lock Screw
7	38-1000	Rotor Nut
8	37-900	E-Ring (2)
9	27-900	Rotor
10	227-900	Rotor Cover 'B'
11	50-1000	Cover Screw (2)
12	31A-900	Trip Arm Screw (2)
13	34B-1000	Pivot Shaft
14	34C-900	Pivot Spring
15	34A-1500	Pivot Arm
16	34D-900	Pivot Arm Kick Lever
17	27A-900	Rotor Cover 'A'
18	24-900	Bail Wire Assembly
19	132-900	Washer
20	35-900	Line Roller
21	35A-900	Line Roller Ball Brg.
22	35B-900	Line Roller Collar
23	34-900	Bail Arm
25	36-900	Line Roller Screw
26	19A-900	Spacer
27	20A-900	Screw (3)
28	20-900	One Way Clutch
29	20B-900	Ball Bearing (2)
30	19-900	Pinion Gear
31	19B-900	Rear Pinion Bushing
32	28-900	Anti-Reverse Lever Cam
33	28B-900	Anti-Reverse Lever Spring
34	28A-900	Anti-Reverse Lever
35	6F-900	Lever Mtg. Screw
36	15A-900	Handle Spacer
37	15-900	Handle Assembly
38	1-900	Main Body
39	1A-900	Housing Protector
40	1C-900	Housing Protector Screws (2)
41	8-900	Main Gear
42	8A-1000	Main Gear Shim
43	55-895	Ball Bearing
44	9A-1000	Handle Retaining Screw
45	2A-900	Side Plate
46	46-1000	Screw (3)
47	233-900	Bearing Cover
48	231A-900	Crosswind Cam Collar
49	231-900	Crosswind Gear
50	231B-900	Crosswind Cam
51	231C-900	Crosswind Pressure Plate
52	231D-900	Crosswind Gear Screw (3)
53	43-900	Crosswind Block
54	44-900	Crosswind Block Screw
56	8A-1500	Upper Roller Washer
57	28C-900	Washer (2)
58	15B-900	Washer
59	1B-900	Housing Cover