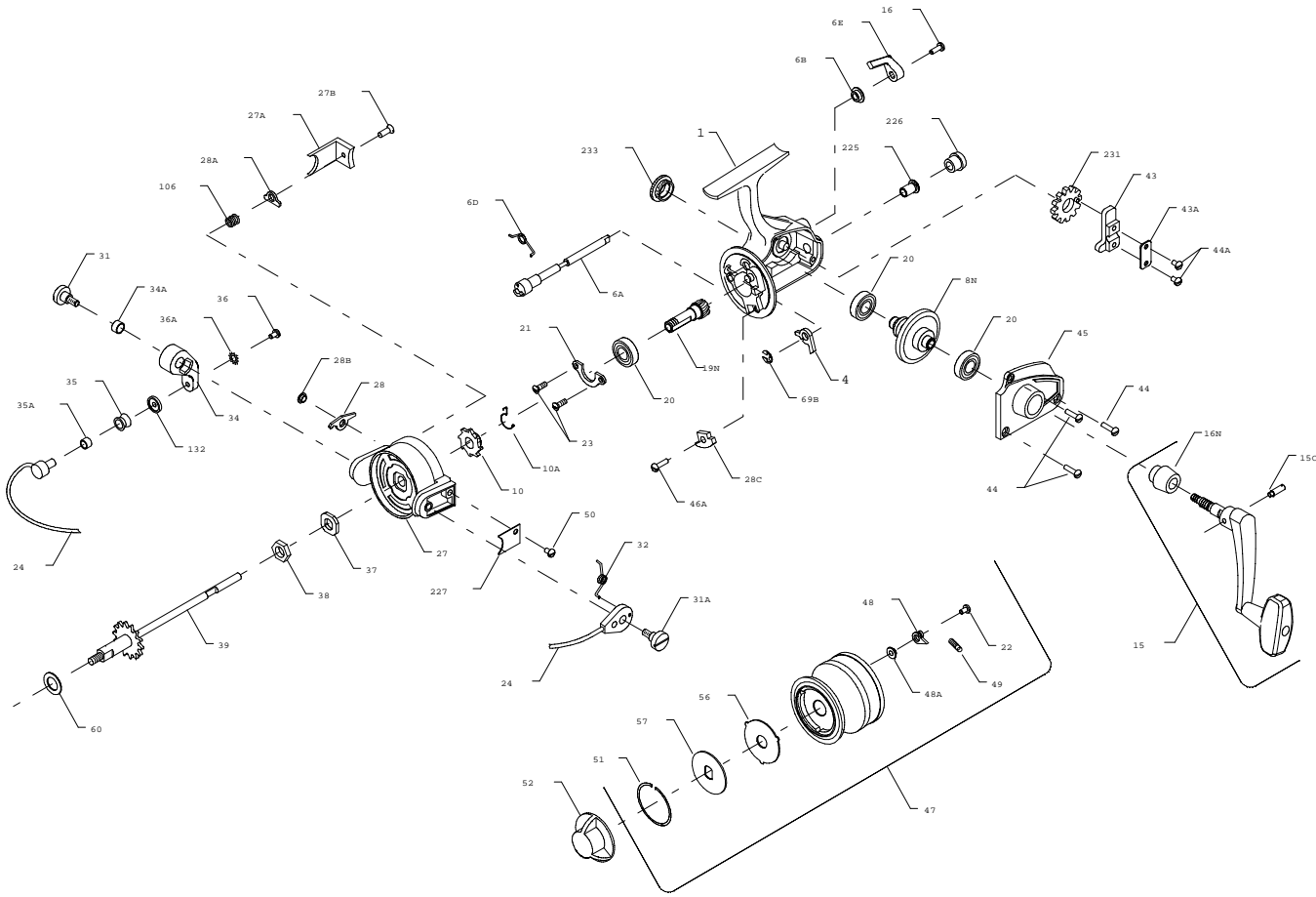




PARTS LIST FOR MODEL 4400SS



KEY

| NO. | PART NO. | DESCRIPTION |
|-----|-----------|--------------------------------|
| 1 | 001P4400 | Housing |
| 4 | *004N4400 | Dog |
| 6A | 006A440 | Eccentric |
| 6B | 006B750 | Eccentric Liner |
| 6D | 006D710 | Eccentric Spring |
| 6E | 006E750 | Eccentric Lever |
| 8N | 008N4400 | Main Gear |
| 10 | *010N4400 | Ratchet |
| 10A | *230N5500 | Anti-Reverse Spring |
| 15 | 015 4400 | Handle (Complete) |
| 15C | 015C650 | Handle Pivot Screw |
| 16 | 016 910 | Eccentric Screw |
| 16N | 016 4400 | Handle Collar |
| 19N | 019N4400 | Pinion |
| 20 | 020 722 | Ball Bearing |
| 21 | 021 450 | Bearing Cover |
| 22 | 022 750 | Spool Click Screw |
| 23 | 023 750 | Bearing Cover Screw (2 req.) |
| 24 | 024 440 | Bail Wire |
| 27 | 027 440 | Rotor |
| 27A | 027A440 | Bail Trip Cover |
| 27B | 027B420 | Rotor End Screw |
| 28 | 028 440 | Trip Lever |
| 28A | 028A440 | Cam Lever |
| 28B | 028B440 | Trip Lever Bushing |
| 28C | 028C440 | Trip Cam |
| 31 | 031 550 | Bail Arm Screw |
| 31A | 031A450 | Trip Arm Screw |
| 32 | 032 440 | Bail Spring |
| 34 | 034 450 | Bail Arm |
| 34A | 034A550 | Bail Arm Bushing |
| 35 | 035 704 | Liner Roller |
| 35A | 035A704 | Line Roller Bushing |
| 36 | 036 750 | Bail Stud Screw |
| 36A | 036A750 | Lock Washer |
| 37 | 037 450 | Rotor Washer |
| 38 | 038 550 | Rotor Nut |
| 39 | 039 440 | Spool Shaft |
| 43 | 043 440 | Crosswind Block |
| 43A | 043A440 | Crosswind Block Plate |
| 44 | 044 704 | Cover Screw (3 req.) |
| 44A | 044 4400 | Crosswind Block Screw (2 req.) |
| 45 | 045 4400 | Housing Cover |
| 46A | 046A704 | Screw (1 req.) |
| 47 | 047 4400 | Spool (Complete) |
| 48 | 048 450 | Click Tongue |
| 48A | 048A750 | Click Tongue Washer |
| 49 | 049 710 | Click Tongue Spring |
| 50 | 050 712 | Bail Spring Cover Screw |
| 51 | 051 4400 | Retaining Ring |
| 52 | 052 440 | Drag Knob |
| 56 | 056 440 | Drag Washer-HT100 (3 req.) |
| 57 | 057 440 | Metal Keyed Washer (2 req.) |
| 60 | 060 450 | Thrust Washer (Teflon) |
| 69B | 069B4400 | Retaining Ring |
| 106 | 106 5500 | Rotor End Spring |
| 132 | 132 450 | Roller Washer |
| 225 | 225 440 | Crosswind Shaft Bushing |
| 226 | 226 450 | Bushing Cap Screw |
| 227 | 227 440 | Bail Spring Cover |
| 231 | 231 440 | Crosswind Gear |
| 233 | 233 440 | Bearing Cover |